



WHITEHORNES

Buy. Sell. Let. Relax!

0114 268 8533
info@whitehorns.com
www.whitehorns.com

15 Ranmoor Court Graham Road, Sheffield

Sheffield

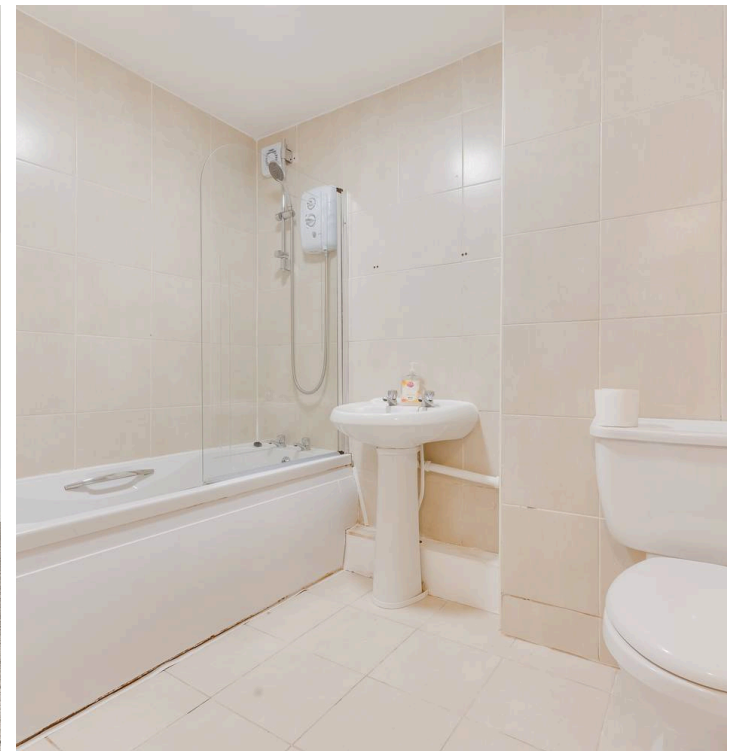
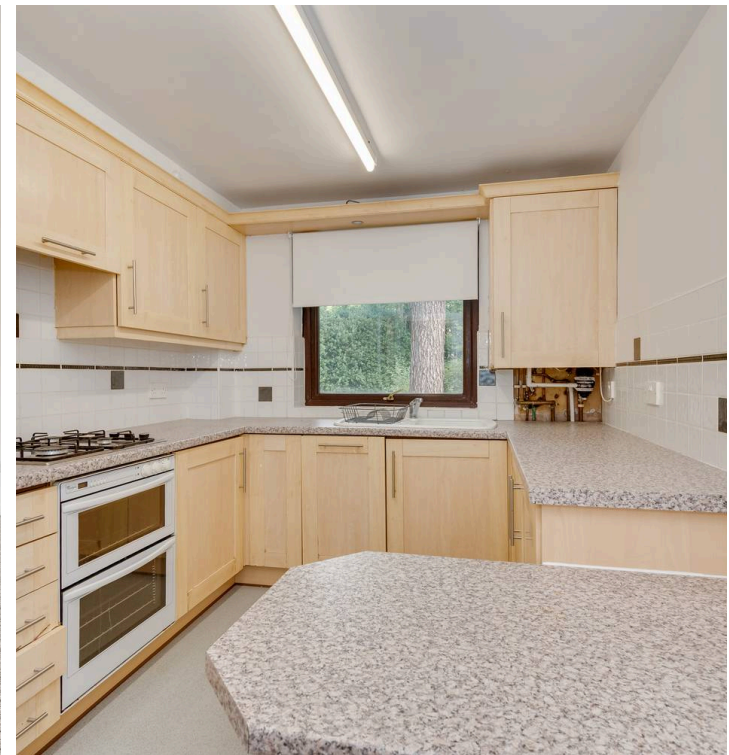
Guide Price £190,000 - £200,000

15 Ranmoor Court Graham Road

Sheffield, Sheffield

An incredibly rare opportunity has arisen to purchase this exceptionally spacious three bedrooomed, first floor apartment. Offered to the open market with no onward chain and vacant possession, the property is priced to attract attention. With private balcony together with a garage that can be used as additional storage if required, number 15 enjoys 929 sq feet of light and spacious accommodation on one floor. Forming part of this fabulous residential development that is accessed from Graham Road, the property offers a real blank canvas that's ripe for personalisation to the new buyers taste and standards but equally this is reflected within the asking guide price. This fabulous apartment will appeal to the young professional couple and those looking to downsize in equal measures. Located close to fashionable Hangingwater and Sharrow Vale, that boasts an array of independent cafes, shops and eateries Council Tax band: C Tenure: Leasehold

- WELL PRESENTED AND PROPORTIONED THREE BEDROOM FIRST FLOOR APARTMENT
- BALCONY ACCESSED FROM THE SITTING ROOM PRIVATE SINGLE GARAGE AND VISITOR PARKING BAYS
- LOCATED IN THE VERY HEART OF ULTRA POPULAR RANMOOR ON THE SOUTH WEST OF THE CITY
- EASY ACCESS TO PRINCIPAL HOSPITALS AND UNIVERSITIES BOTH WITHIN WALKING DISTANCE
- FASHIONABLE OAKBROOK ROAD AND SHARROW VALE INDEPENDENT AMENITIES ON THE DOORSTEP
- PRICED TO ATTRACT INTEREST







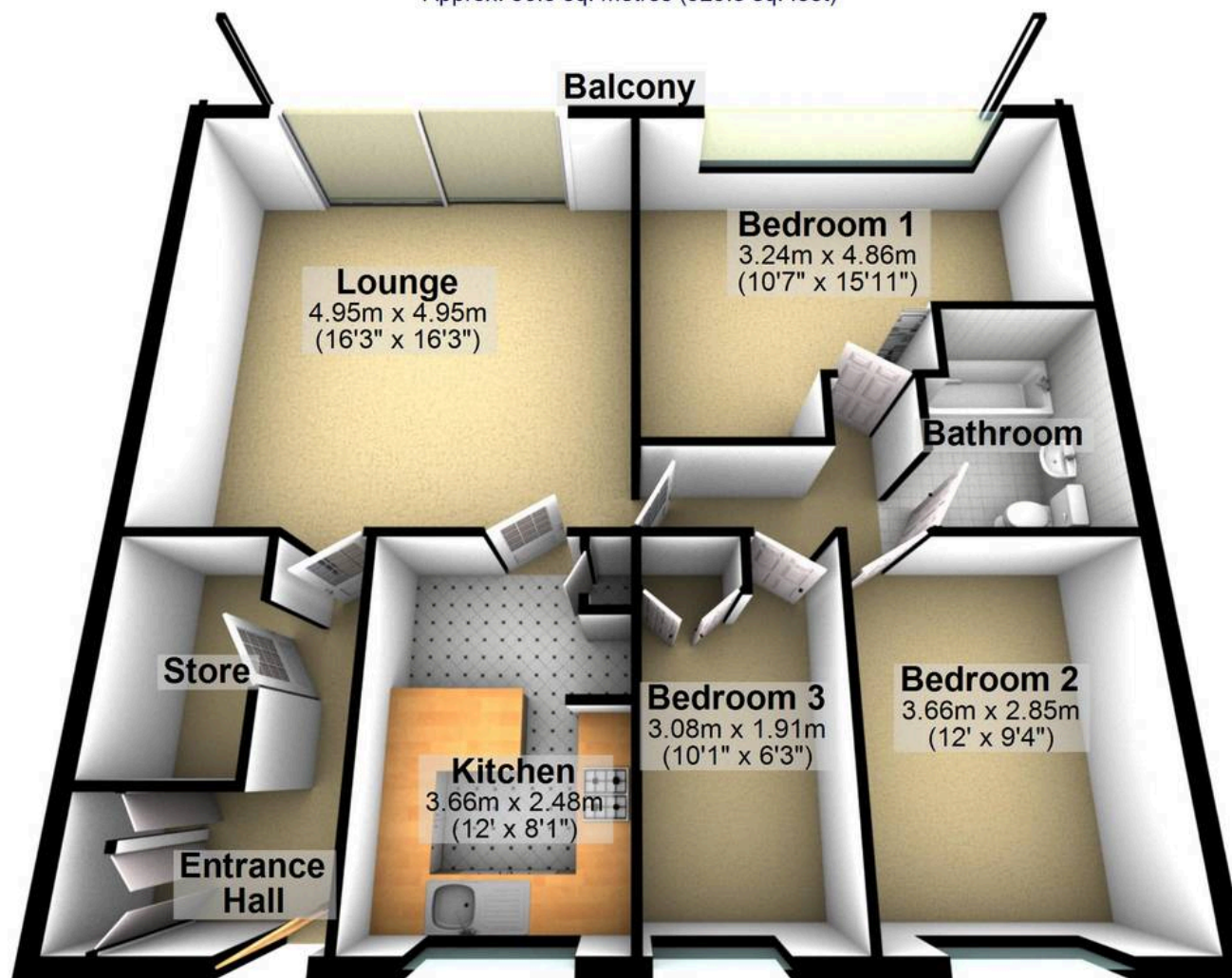
WHITEHORNES

Buy. Sell. Let. Relax!

0114 268 8533
info@whitehornes.com
www.whitehornes.com

First Floor

Approx. 86.3 sq. metres (929.3 sq. feet)



Total area: approx. 86.3 sq. metres (929.3 sq. feet)

All measurements are approximate
Plan produced using PlanUp.