



WHITEHORSES

Buy. Sell. Let. Relax!

0114 268 8533
info@whitehorses.com
www.whitehorses.com

34 Argyle Road, Sheffield

Sheffield

Guide Price **£265,000**

34 Argyle Road

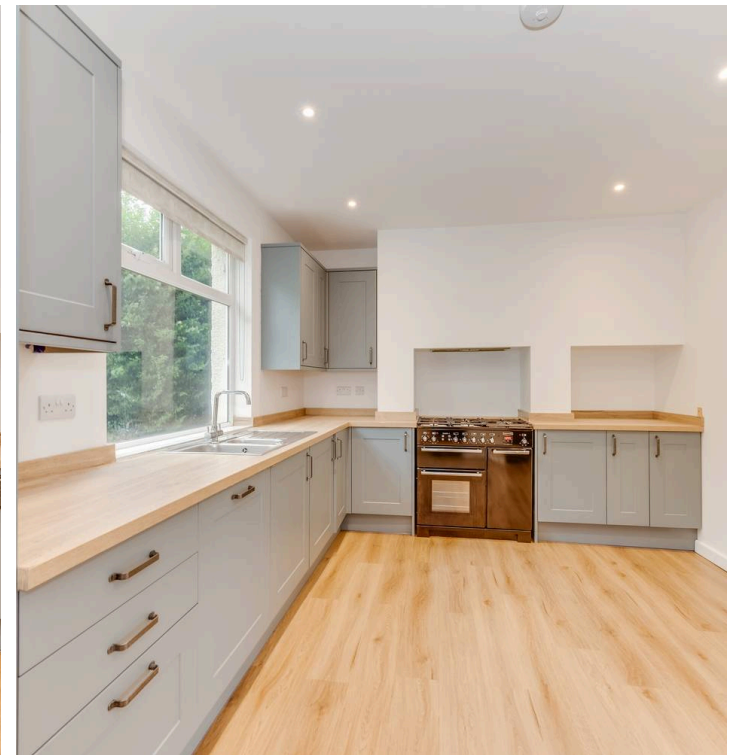
Sheffield, Sheffield

Perfect for first time buyers is this immaculately presented and very well proportioned three bedroomed semi-detached family home. Available with no onward chain and having been finished throughout to the very highest of standards this property also benefits from sitting in an ideal location to take full advantage of the nearby amenities, green spaces and unrivalled transport links. Briefly consists of entrance hallway, lounge, well appointed kitchen, dining room, two double bedrooms, single bedroom and family bathroom. Outside is a private rear garden ideal for children and pets.

Council Tax band: A

Tenure: Leasehold

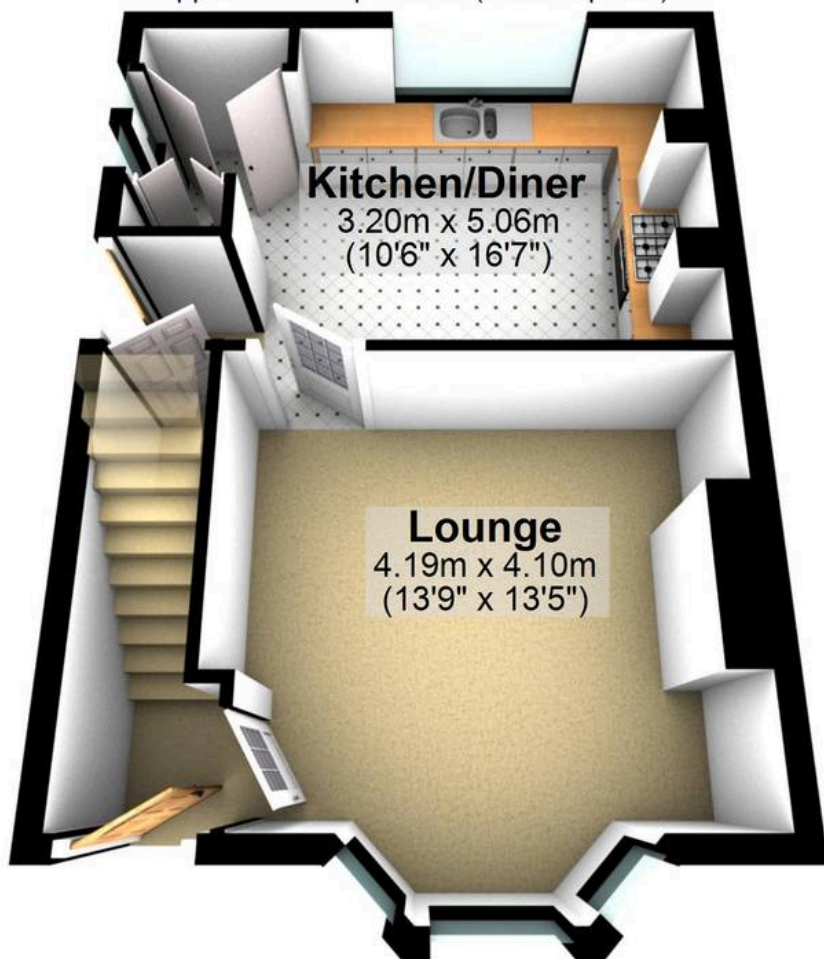
- THREE BEDROOMED SEMI-DETACHED FAMILY HOME
- AVAILABLE WITH NO ONWARD CHAIN
- RECENTLY REFURBISHED TO A GREAT STANDARD THROUGHOUT
- CLOSE TO MEERSBROOK PARK
- REPUTABLE LOCAL SCHOOLS
- MODERN AND STYLISH THROUGHOUT
- PRIVATE GARDEN PERFECT FOR CHILDREN AND PETS
- EXCELLENT PUBLIC TRANSPORT LINKS
- WALKABLE TO THE CITY CENTRE
- EASY ACCESS TO A WEALTH OF LOCAL AMENITIES





Ground Floor

Approx. 35.4 sq. metres (380.6 sq. feet)



First Floor

Approx. 35.0 sq. metres (377.1 sq. feet)



Total area: approx. 70.4 sq. metres (757.7 sq. feet)

All measurements are approximate
Plan produced using PlanUp.



WHITEHORNS

Buy. Sell. Let. Relax!

0114 268 8533
info@whitehorns.com
www.whitehorns.com