

25 Stacye Rise, Woodhouse
Sheffield

Guide Price **£250,000**

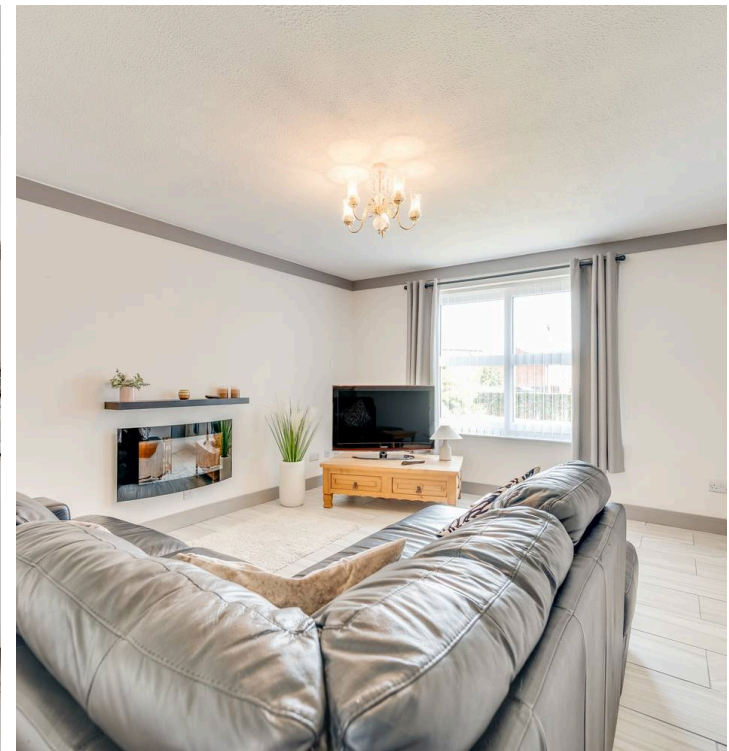
25 Stacy Rise

Woodhouse, Sheffield

Available to the market with the benefit of no onward chain and vacant possession is this superb semi-detached three bedroom family home with a light, bright and modern feel throughout. Briefly consisting of a spacious lounge, well appointed kitchen/diner, two double bedrooms, a single bedroom, and a family shower/wet room. To the outside a deceptively large front and rear garden and ample parking. Located close by to numerous local amenities. Easy commuting with only Twelve minutes to the M1 motorway, eight minutes to trams at Chrystal Peaks shopping complex and Drake-house retail outlet. Twenty minutes to Sheffield centre or Meadowhall via Mosborough parkway. Five minutes to Woodhouse Pubs shops and library with a frequent both way connecting Bus service, stops just 2mins away. Falling under the catchment for numerous fantastic Schools and Academies. A comprehensive refurbishment list is available at the viewings. Viewing is essential to do full justice. Council Tax band: A

Tenure: Freehold

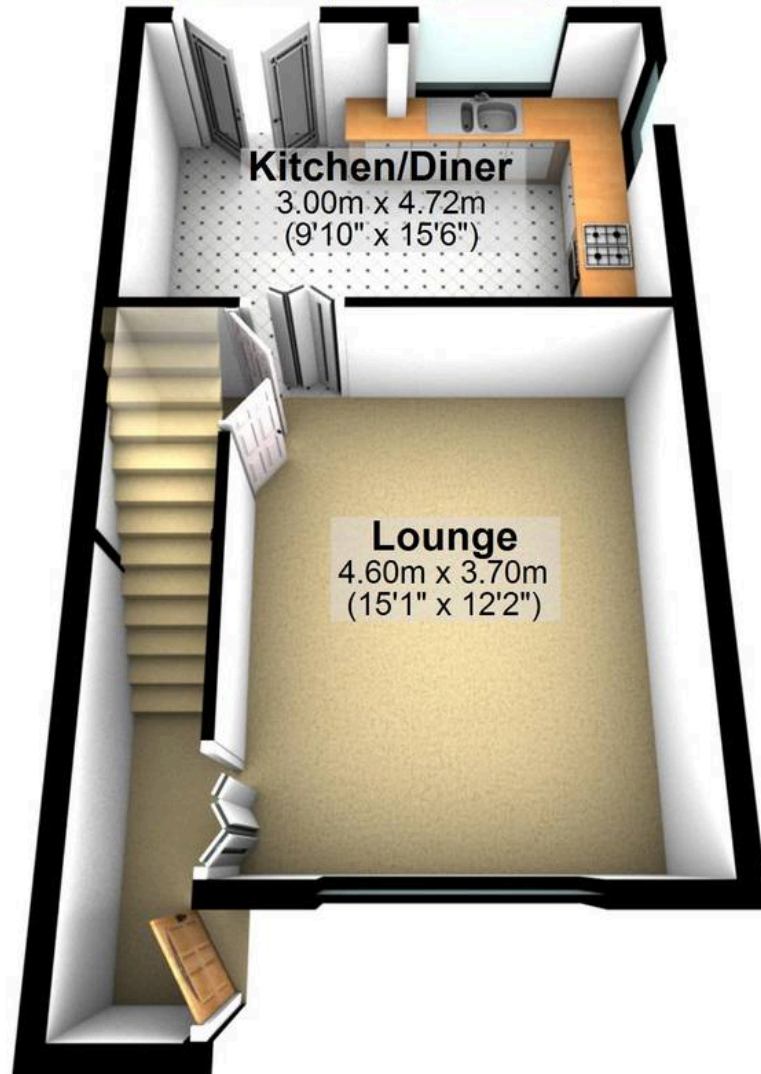
- THREE BEDROOMED SEMI-DETACHED FAMILY HOME BUILT IN 1978
- NICELY APPOINTED WITH 3500 SQ FEET PRIVATE GARDEN WITH THE ADVANTAGE OF AN EIGHTEEN-FOOT-WIDE SIDE GARDEN PLOT WITH PORTENCIAL FOR DEVELOPMENT WITH NUMEROUS EXTENSION DESIGN POSSIBILITIES
- OFFERED FOR SALE WITH NO ONWARD CHAIN
- VERY WELL PRESENTED THROUGHOUT WITH A MODERN AND STYLISH FINISH
- GREAT LOCATION ON THIS QUIET CUL-DE-SAQ
- CLOSE TO FANTASTIC TRANSPORT LINKS





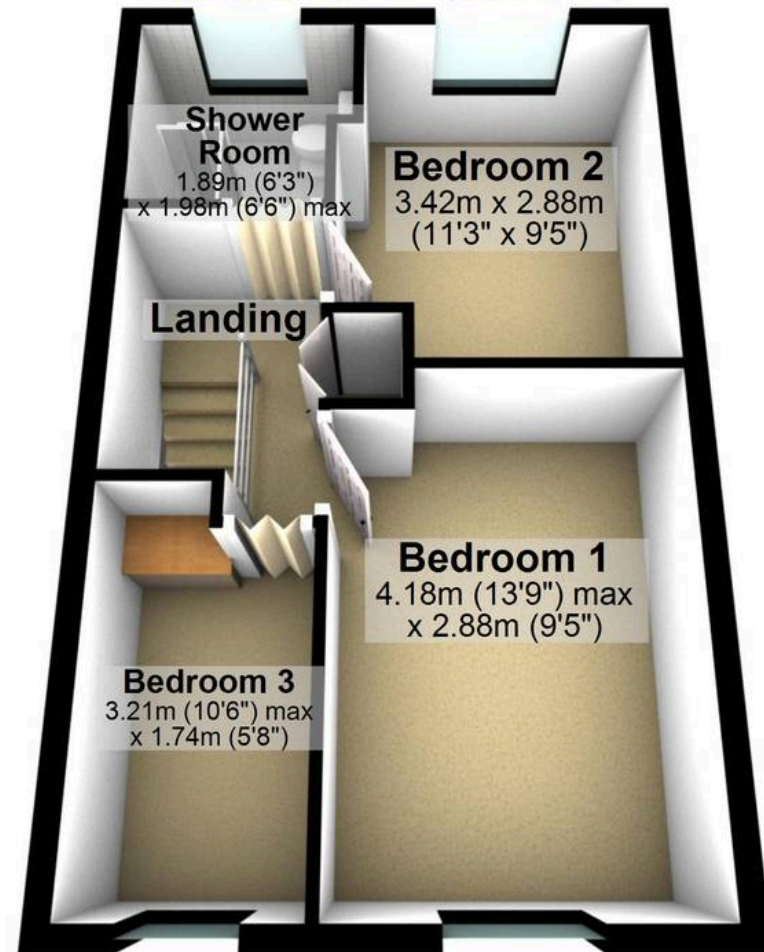
Ground Floor

Approx. 37.3 sq. metres (401.0 sq. feet)



First Floor

Approx. 36.3 sq. metres (390.9 sq. feet)



Total area: approx. 73.6 sq. metres (791.9 sq. feet)

All measurements are approximate
Plan produced using PlanUp.



WHITEHORNS

Buy. Sell. Let. Relax!

0114 268 8533
info@whitehorns.com
www.whitehorns.com