



WHITEHORSES

Buy. Sell. Let. Relax!

0114 268 8533
info@whitehorses.com
www.whitehorses.com

109 Neill Road, Sharrow Vale

Sheffield

Guide Price **£249,950**

W
WHITEHORSES
FOR SALE

P
Mon - Sat
8 am - 8.30 pm
Permit holders
or
Pay at machine
→
Display ticket
Max stay 2 hours

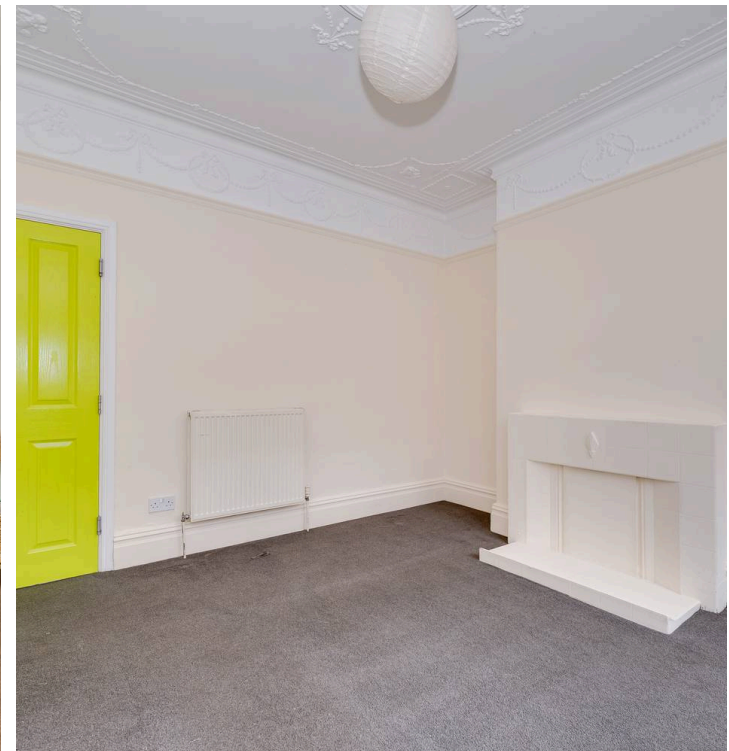
109 Neill Road

Sharrow Vale, Sheffield

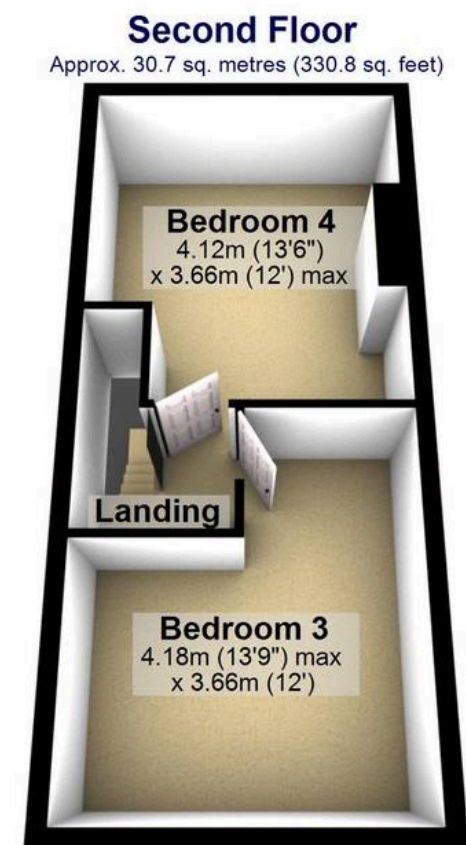
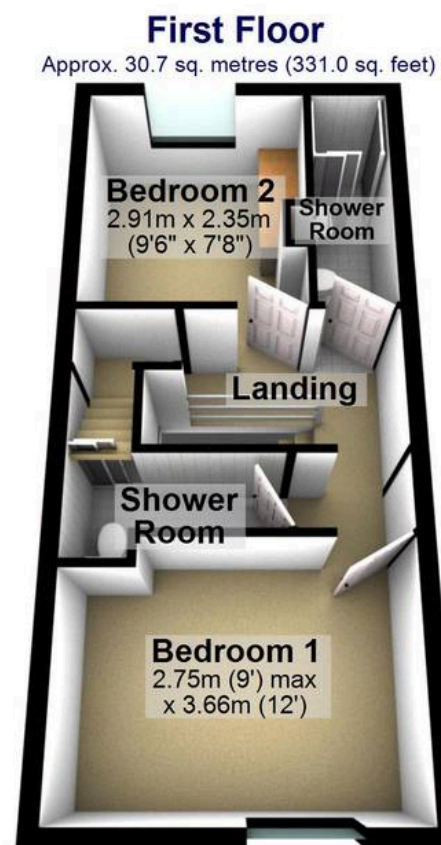
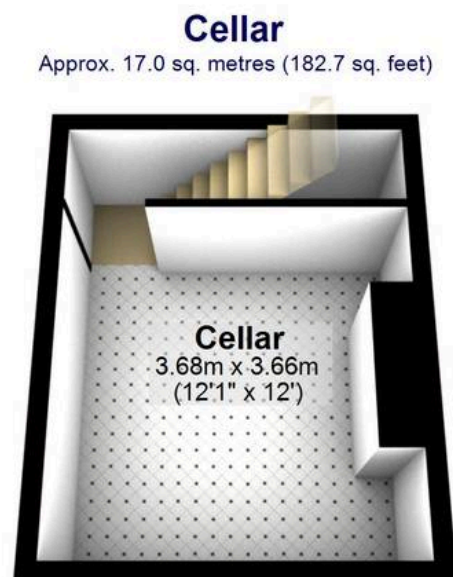
Nestled in a much sought-after location, this striking 4 Bedroom Terraced House is a showcase of modern living. Boasting a contemporary and stylish design throughout, this four bedroomed property is deceptively spacious and is situated in the desirable vicinity of both Ecclesall Road and Sharrowvare road, this versatile home is a stone's throw away from reputable local schools and offers fantastic public transport links, making it an ideal choice for first time buyers, families, or those seeking a lucrative buy to let opportunity. Endcliffe Park is just a leisurely stroll away and the property briefly consists of large open plan kitchen dining room, lounge, four good sized bedrooms and family bathroom. Outside is permit parking and to the rear is a private garden. Council Tax band: B

Tenure: Leasehold

- AVAILABLE WITH NO ONWARD CHAIN
- FOUR BEDROOMED MID-TERRACED PROPERTY
- GREAT LOCATION CLOSE TO ECCLESALL ROAD
- DECEPTIVELY SPACIOUS
- MODERN AND STYLISH FINISH THROUGHOUT
- REPUTABLE LOCAL SCHOOLS
- PERFECT FOR FIRST TIME BUYERS AND FAMILIES ALIKE
- EXCELLENT BUY TO LET OPPORTUNITY
- FANTASTIC PUBLIC TRANSPORT LINKS
- ENDCLIFFE PARK WITHIN EASY WALKING DISTANCE







Total area: approx. 113.4 sq. metres (1220.6 sq. feet)

All measurements are approximate
Plan produced using PlanUp.