



**WHITEHORNES**

Buy. Sell. Let. Relax!

0114 268 8533  
info@whitehorses.com  
www.whitehorses.com

**30 Hazlebarrow Road, Jordanthorpe**

Sheffield

Guide Price **£150,000**



# 30 Hazlebarrow Road

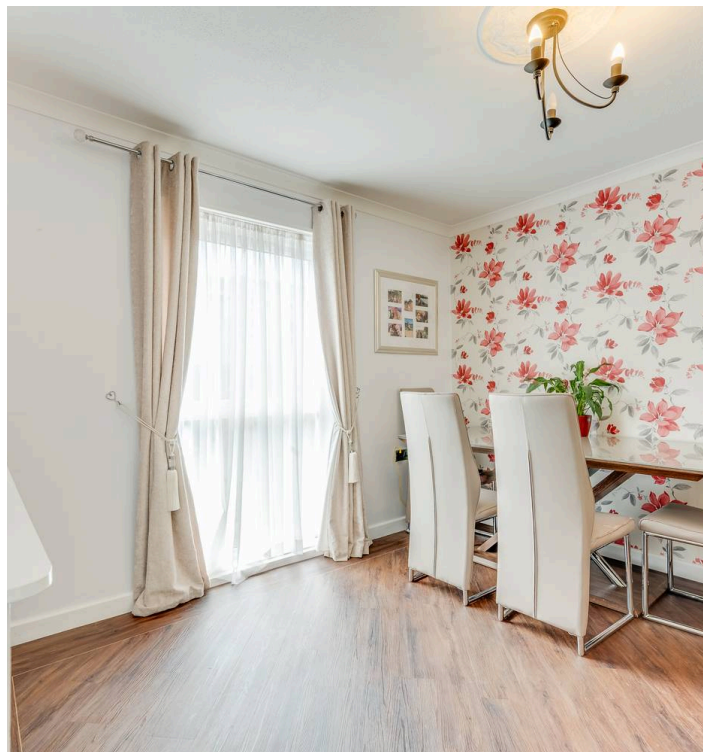
Jordanthorpe, Sheffield

Perfect for first time buyers and investors alike is this three-bedroom mid- terrace property. This property offers spacious living accommodations across two beautifully finished floors. In brief this property consists of a spacious living/dining room, a well-appointed kitchen, storage space and on the top floor, 3 double bedrooms and a bathroom. Not forgetting, the large private rear garden and patio that this property has to offer. Situated in the well sought after area of Jordanthorpe with Ofsted rated local schools nearby including Meadowhead Secondary School. Additionally, numerous local amenities such as St James Retail Park and picturesque Graves Park are in close proximity to the property providing an excellent location for families and young couples. Viewing is essential do full justice of this beautifully decorated property.

Council Tax band: A

Tenure: Freehold

- THREE BEDROOMED MID-TERRACED PROPERTY
- WELL PRESENTED AND FINISHED THROUGHOUT
- EXCELLENT TRANSPORT LINKS
- REPUTABLE LOCAL SCHOOLS
- PRIVATE WELL ENCLOSED REAR GARDEN
- WEALTH OF LOCAL AMENITIES WITHIN EASY WALKING DISTANCE
- PERFECT FOR FAMILIES AND FIRST TIME BUYERS ALIKE
- FREEHOLD AND COUNCIL TAX BAND A
- OPEN EXPANSIVE GREEN SPACES WITHIN EASY WALKING DISTANCE
- NO ONWARD CHAIN



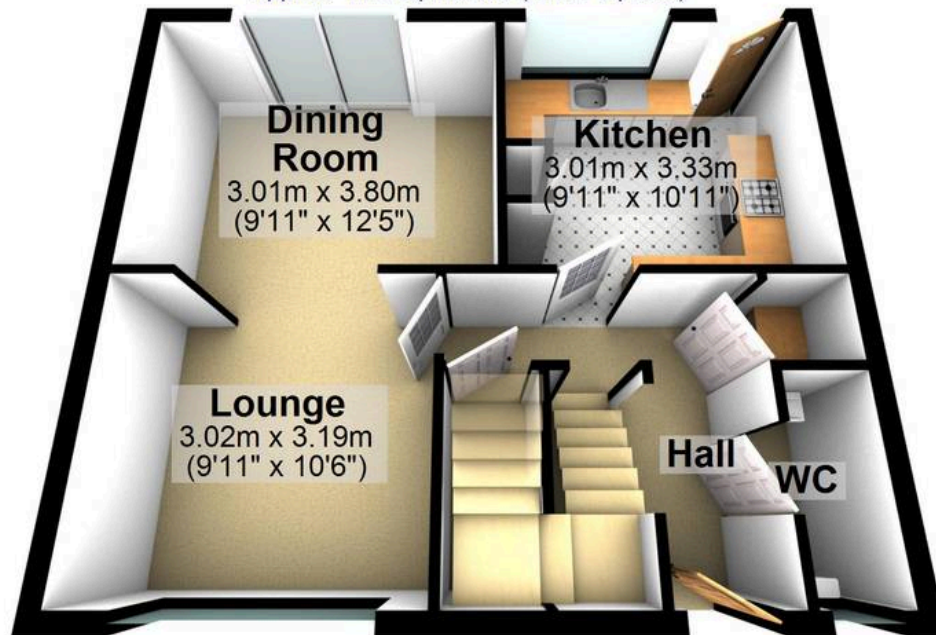






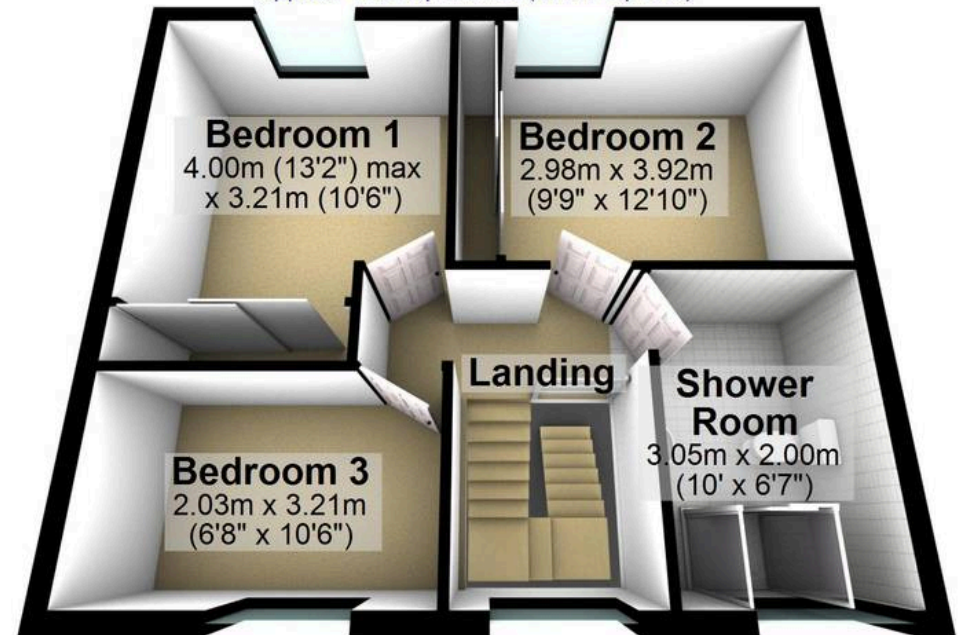
## Ground Floor

Approx. 44.3 sq. metres (477.1 sq. feet)



## First Floor

Approx. 44.3 sq. metres (477.1 sq. feet)



Total area: approx. 88.6 sq. metres (954.2 sq. feet)

All measurements are approximate  
Plan produced using PlanUp.