



WHITEHORSES

Buy. Sell. Let. Relax!

0114 268 8533
info@whitehorses.com
www.whitehorses.com

8 High Storrs Crescent, High Storrs

Sheffield

Offers in excess of **£425,000**

8 High Storrs Crescent

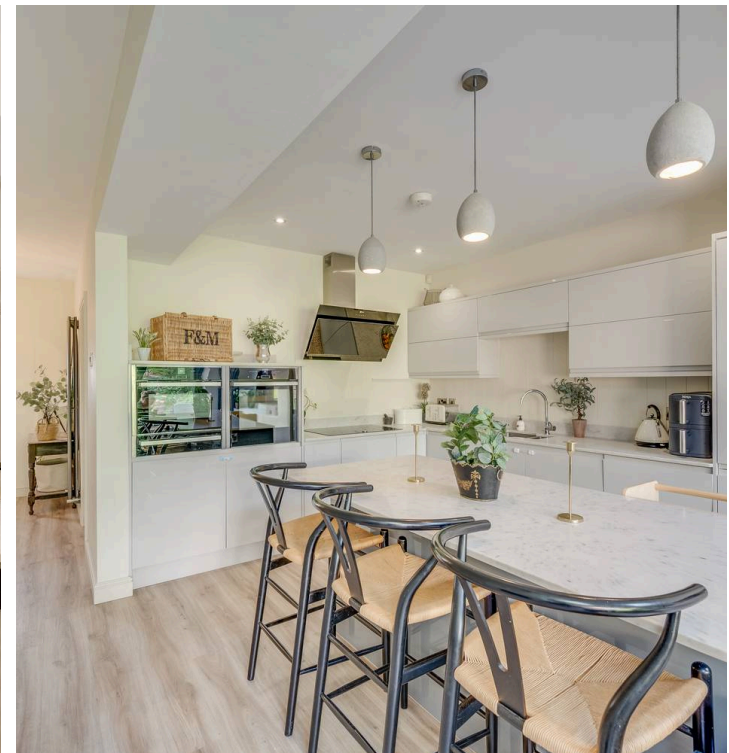
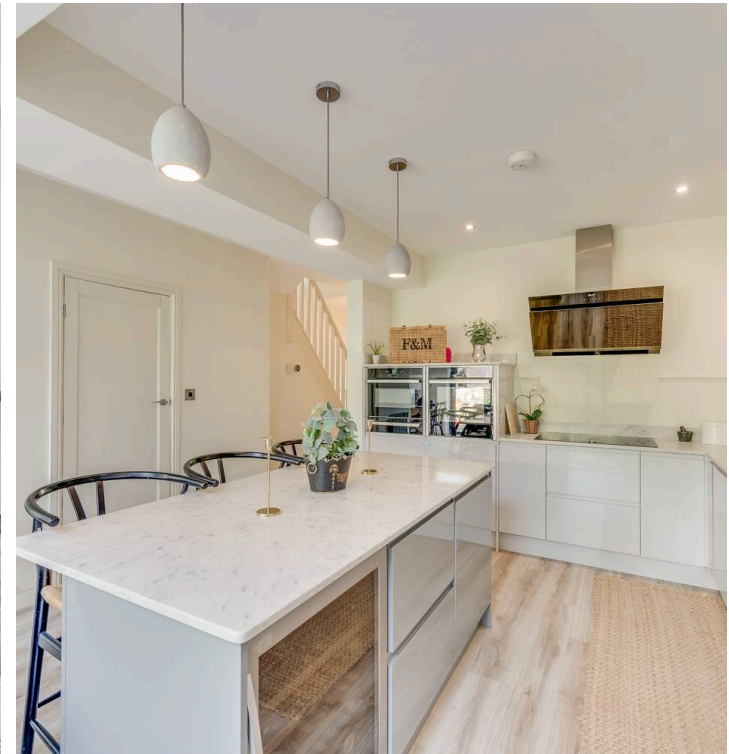
High Storrs, Sheffield

A great opportunity has arisen to purchase this fabulous, three bedroom, one bathroom extended semi detached family home. Located on this incredibly well sought after, quiet residential road in the very heart of this ultra popular suburb of high storrs, number 8 falls within catchment of excellent local schools including Greystones Primary School and High Storrs Secondary School, numerous amenities are on the doorstep and picturesque Endcliffe park is a short stroll away. In brief this light and bright property consists of, an open plan kitchen and dining room, spacious living room, two double bedrooms, a single bedroom and family bathroom. To the outside is a fantastic, private rear garden and convenient off road parking via the driveway, it's easy to say that viewing is essential to do full justice to this wonderful home

Council Tax band: C

Tenure: Freehold

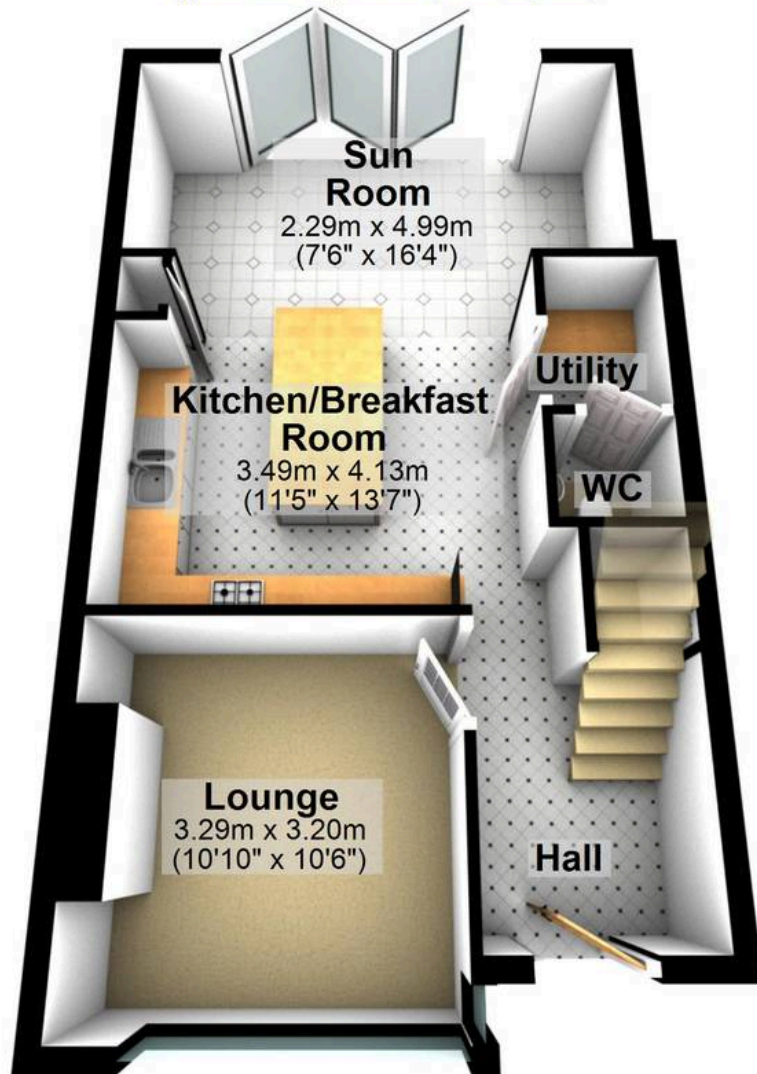
- THREE BEDROOMED SEMI-DETACHED HOUSE
- SUPER POPULAR SUBURB OF HIGH STORRS ON THE SOUTH WEST OF THE CITY
- EASY ACCESS TO PRINCIPAL HOSPITALS UNIVERSITIES AND THE PEAK DISTRICT
- SHORT STROLL TO BINGHAM PARK AND THE PORTER VALLEY
- EXCELLENT SCHOOLING CATCHMENTS INCLUDING ECCLESALL JUNIORS AND HIGH STORRS SECONDARY
- PITCH PERFECT FOR THE GROWING FAMILY MARKET WITH VIEWING ESSENTIAL TO DO FULL JUSTICE
- EASY AND CONVENIENT OFF ROAD PARKING FOR TWO VEHICLES VIA THE DRIVEWAY
- TWO FLOORS OF LIGHT AND BRIGHT ACCOMMODATION TOTALLING 879 SQ FT





Ground Floor

Approx. 45.9 sq. metres (494.2 sq. feet)



First Floor

Approx. 35.8 sq. metres (384.8 sq. feet)



Total area: approx. 81.7 sq. metres (879.1 sq. feet)

All measurements are approximate
Plan produced using PlanUp.