



WHITEHORSES

Buy. Sell. Let. Relax!

0114 268 8533
info@whitehorses.com
www.whitehorses.com

39 Montgomery Road, Nether Edge

Sheffield

Guide Price £875,000 - £895,000

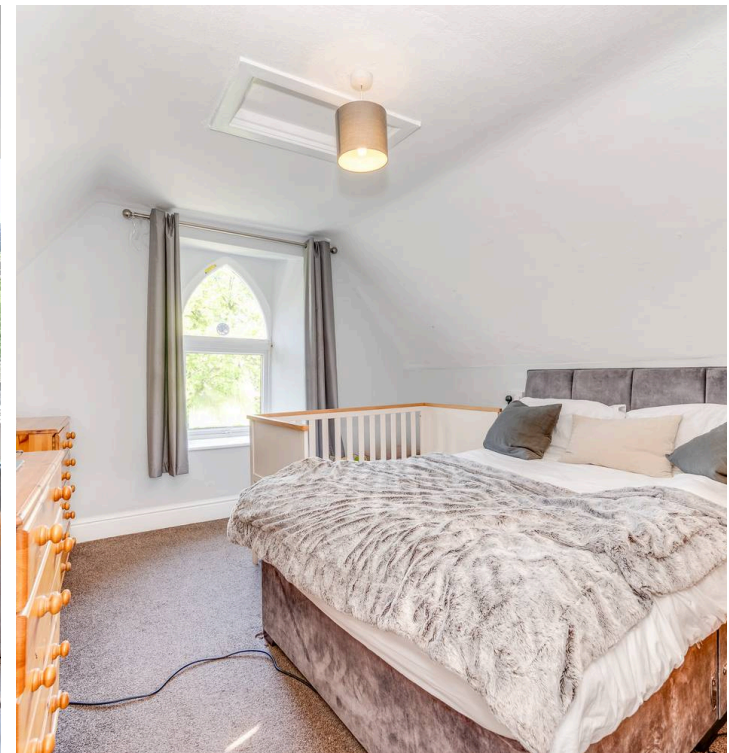
39 Montgomery Road

Nether Edge, Sheffield

A once in a lifetime opportunity has arisen to purchase this incredible, seven bedroom, two bathroom, detached, multiple bay window, stone built family home. Standing in this commanding position and set back from the road ensuring privacy, accessed via gates to the front, that leads to a long driveway running to the side of the property which in turn leads to a substantial rear private, sunny family garden. Within the expansive gardens are a detached garage along with an original stone built outhouse that is ripe to be converted to a work from home office. Internally the property does not disappoint, delivering the original period features, character and charm associated with a property this era and blending them effectively with a modern feel.

Council Tax band: G Tenure: Leasehold

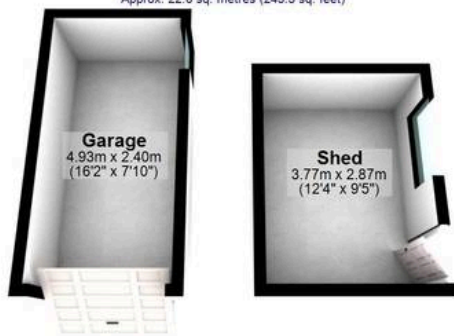
- SENSATIONAL SEVEN BEDROOM TWO BATHROOM DETACHED STONE BUILT MULTIPLE BAY WINDOWED RESIDENCE
- ON E IN A LIFETIME OPPORTUNITY TO ACQUIRE A PROPERTY OF THIS SIZE AND CALIBRE
- SET ACROSS THREE FLOORS THAT TOTAL A SUPER SIZED 3,006 SQ FEET
- SUBSTANTIAL REAR PRIVATE SUNNY GARDEN WITH OUTBUILDING AND GARAGE
- EXCELLENT LOCAL SCHOOLING CATCHMENTS INCLUDING MERCIA AND HIGH STORRS SECONDARY
- WELL SOUGHT AFTER RESIDENTIAL ROAD WITHIN THE VERY HEART OF ULTRA POPULAR NETHER EDGE
- VIEWING IS PREREQUISITE TO FULLY APPRECIATE THE SIZE AND OPPORTUNITIES ON OFFER BY THIS FABULOUS FAMILY HOME
- SET BACK FROM THE ROAD VIA GATED ACCESS ALONG WITH LARGE FRONT AND DRIVEWAY





Outbuilding

Approx. 22.6 sq. metres (243.5 sq. feet)



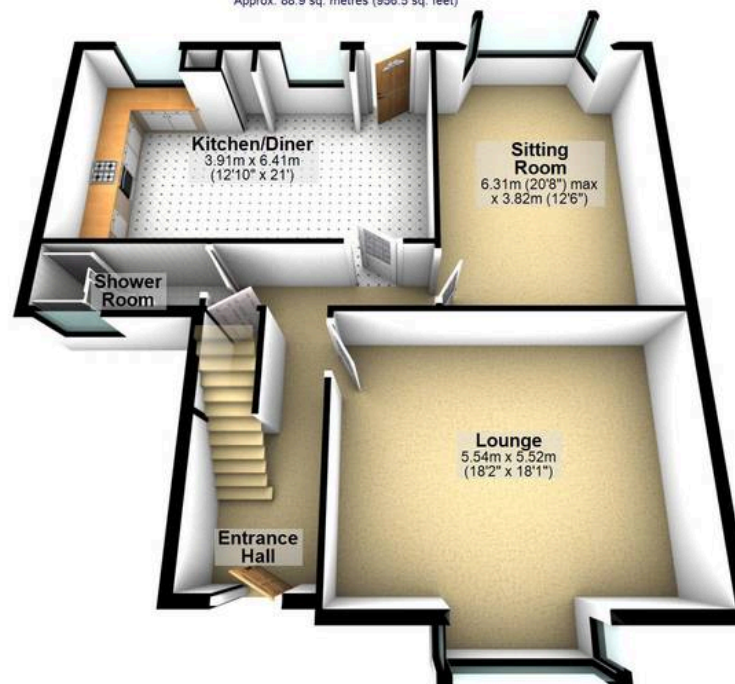
First Floor

Approx. 85.4 sq. metres (919.4 sq. feet)



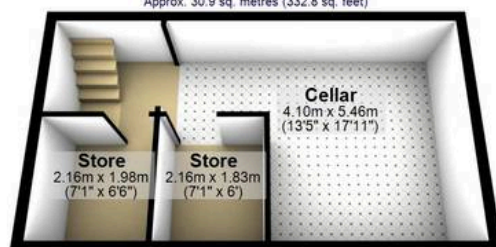
Ground Floor

Approx. 88.9 sq. metres (956.5 sq. feet)



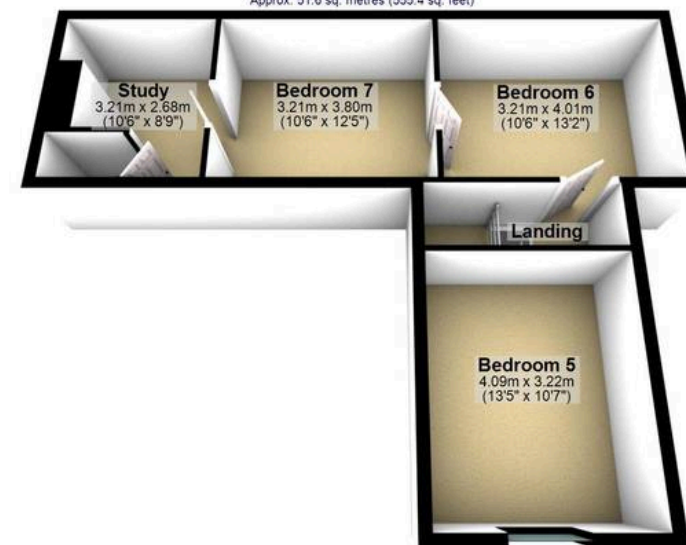
Cellar

Approx. 30.9 sq. metres (332.8 sq. feet)



Second Floor

Approx. 51.6 sq. metres (555.4 sq. feet)



Total area: approx. 279.4 sq. metres (3007.6 sq. feet)

All measurements are approximate.
 Plan produced using PlanUp.