



WHITEHORNES

Buy. Sell. Let. Relax!

0114 268 8533
info@whitehorses.com
www.whitehorses.com

42 Foxwood Road, Intake

Sheffield

Offers in Region of **£210,000**

42 Foxwood Road

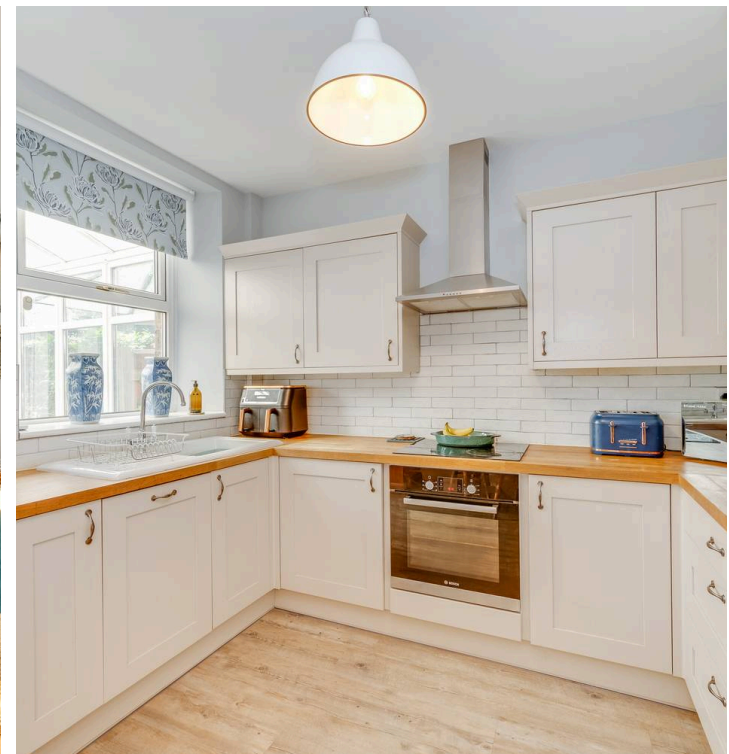
Intake, Sheffield

An absolutely fabulous, stylish and modern throughout as well as immaculately presented and very deceptive two/three bedroomed, stone built period end of run cottage style terrace property. Quietly tucked away on this little known back water in the heart of this well sought after residential suburb within easy access to numerous local amenities, well sought after schooling catchments and central Sheffield. With super light and spacious accommodation carefully arranged over three floors together with an extended rear sun room and a huge bonus of off road parking to the front. Being of particular interest to the professional couple, first time buyer or young family alike number 42 represents areal rarity to market.

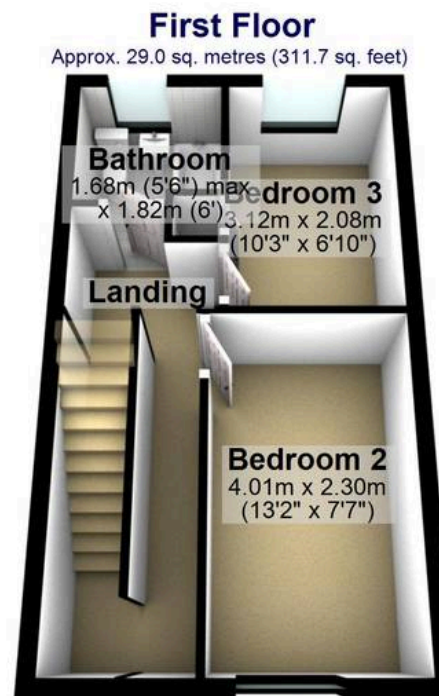
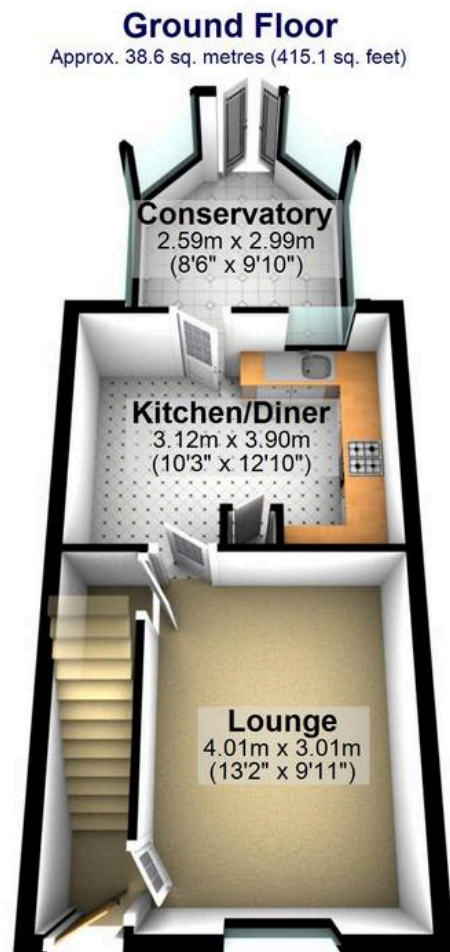
Council Tax band: A

Tenure: Leasehold

- AVAILABLE WITH NO ONWARD CHAIN
- FANTASTIC MODERN AND STYLISH FINISH THROUGHOUT
- GREAT QUIET LOCATION IN THE HEART OF THIS POPULAR SUBURB
- CLOSE TO WEALTH OF LOCAL AMENITIES
- PERFECT FOR FIRST TIME BUYERS
- THREE GREAT SIZED BEDROOMS
- EXCELLENT PUBLIC TRANSPORT LINKS
- PRIVATE GARDEN PERFECT FOR PETS AND CHILDREN
- OFF ROAD PARKING







Total area: approx. 94.3 sq. metres (1015.4 sq. feet)

All measurements are approximate
Plan produced using PlanUp.