



WHITEHORSES

Buy. Sell. Let. Relax!

0114 268 8533
info@whitehorses.com
www.whitehorses.com

31 Glenalmond Road, Greystones

Sheffield

Guide Price **£425,000**

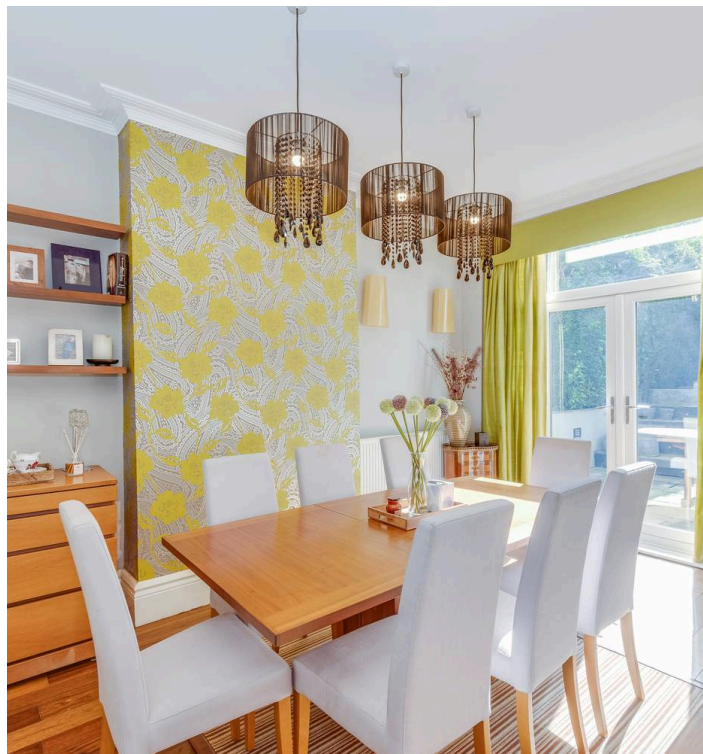
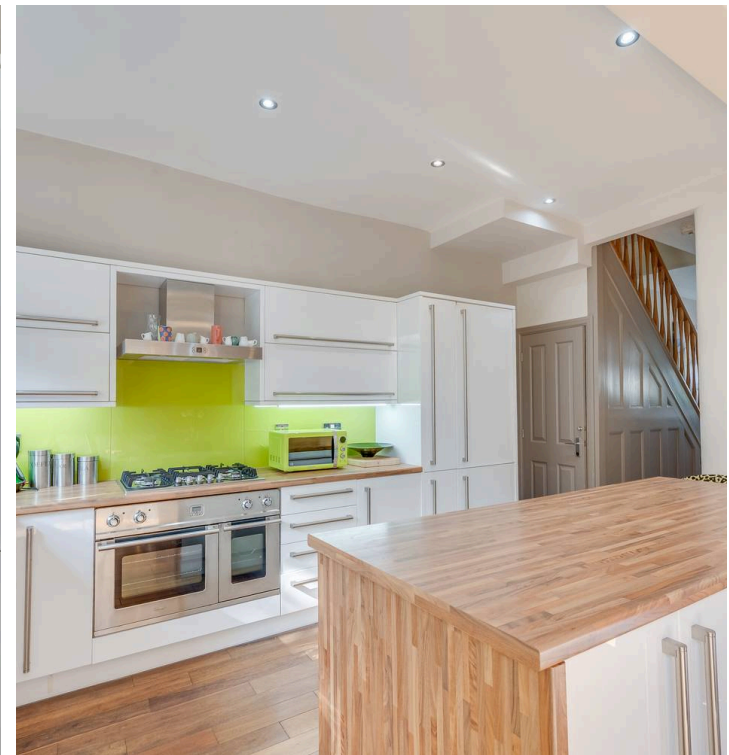
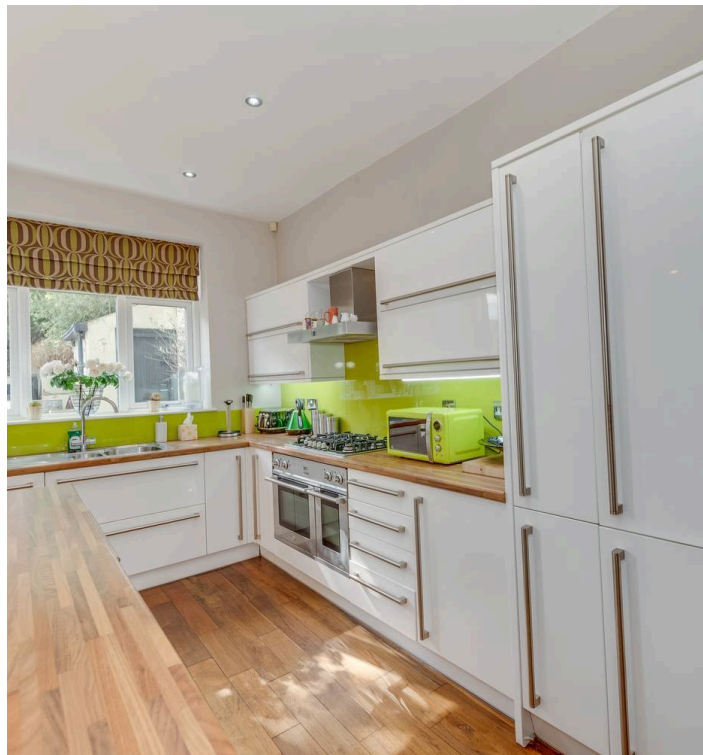
31 Glenalmond Road

Greystones, Sheffield

This immaculate Mid-Terraced House offers a spacious and versatile living accommodation that caters perfectly to the needs of modern family living. Boasting four bedrooms, this family home also benefits from two bathrooms, reception room, and open plan kitchen, offering convenience and functionality. Available with no onward chain, this residence is nestled in the heart of popular Ecclesall, walking distance to a wealth of shops, cafes, and pubs offering a vibrant social scene. Situated in the catchment area for outstanding local schools, this property is perfect for those seeking educational excellence for their children. The large garden presents a private outdoor space, plus the proximity to the picturesque Peak District and popular Endcliffe Park makes it a perfect choice for growing families seeking a forever home in a prime location. Council Tax band: C

Tenure: Leasehold

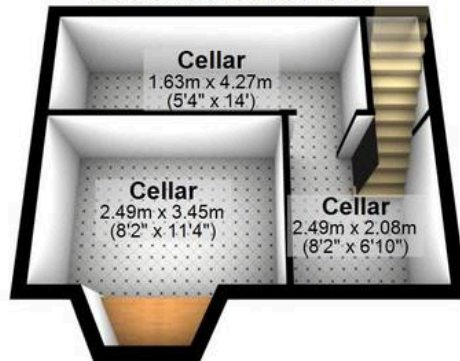
- FOUR BEDROOMED MID-TERRACED FAMILY HOME
- TWO BATHROOMS AND TWO RECEPTION ROOMS
- AVAILABLE WITH NO ONWARD CHAIN
- IN THE HEART OF POPULAR ECCLESALL
- IN THE CATCHMENT AREA FOR OUTSTANDING LOCAL SCHOOLS
- WEALTH OF SHOPS, CAFES AND PUBS WITHIN EASY WALKING DISTANCE
- LARGE AND PRIVATE GARDEN
- POTENTIAL TO CONVERT
- CLOSE TO THE PEAK DISTRICT AS WELL POPULAR ENDCLIFFE PARK
- PERFECT FOR GROWING FAMILIES





Cellar

Approx. 24.9 sq. metres (267.7 sq. feet)



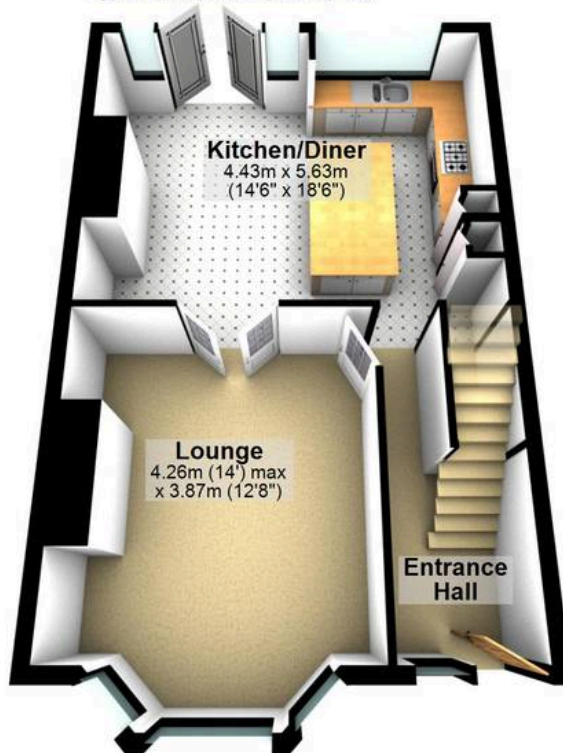
First Floor

Approx. 55.6 sq. metres (598.6 sq. feet)



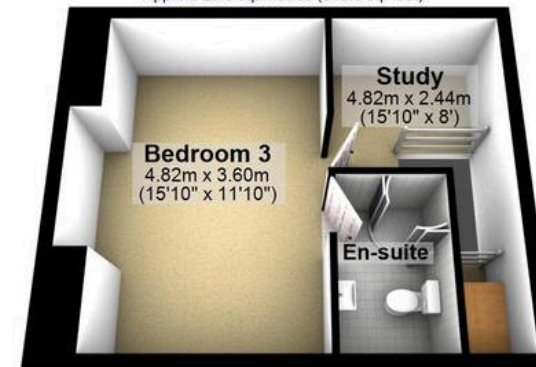
Ground Floor

Approx. 50.0 sq. metres (538.6 sq. feet)



Second Floor

Approx. 29.6 sq. metres (318.5 sq. feet)



Total area: approx. 160.1 sq. metres (1723.5 sq. feet)

All measurements are approximate
Plan produced using PlanUp.

31 Glenalmond Road



WHITEHORNES

Buy. Sell. Let. Relax!

0114 268 8533
info@whitehorses.com
www.whitehorses.com