



WHITEHORSES

Buy. Sell. Let. Relax!

0114 268 8533
info@whitehorses.com
www.whitehorses.com

182 Gervase Avenue, Sheffield

Sheffield

Guide Price **£120,000**

182 Gervase Avenue

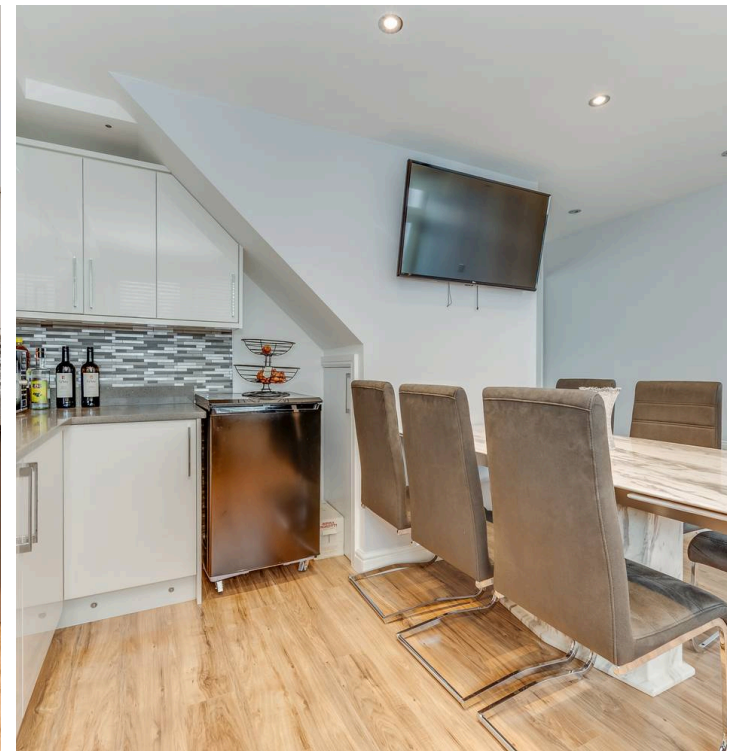
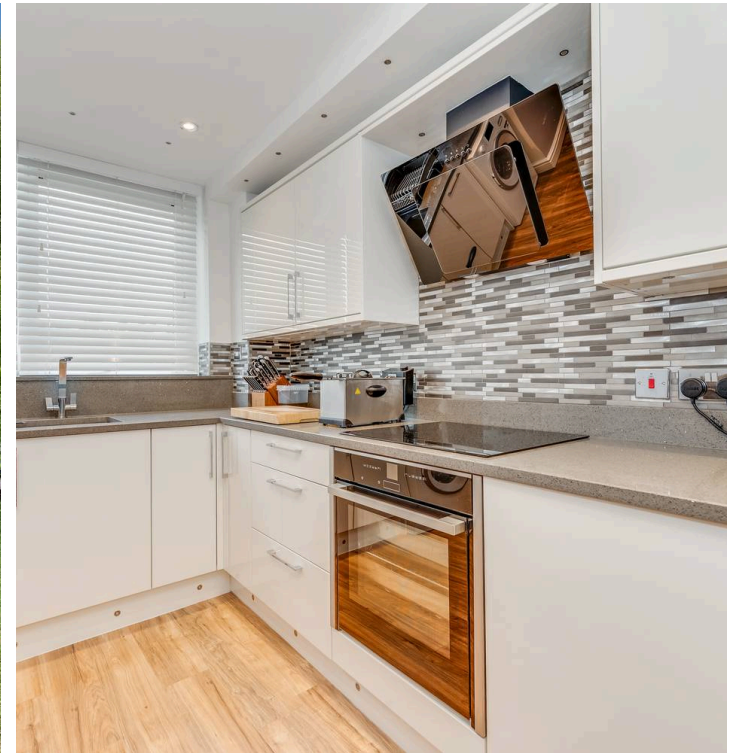
Sheffield, Sheffield

An absolutely stunning, immaculately presented and very deceptive, two bedroom, upper floor maisonette property. Offered for sale with no onward chain this property is of particular interest to first time buyers and investors alike. Located in the heart of this popular residential suburb, with easy access to a wealth of local amenities as well as having ample green spaces a short stroll away. Briefly consisting of a modern kitchen/diner, light and bright living room, two double bedrooms and a shower room. Outside is ample on street parking and to the front of the property is a private garden ideal for pets and children.

Council Tax band: A

Tenure: Leasehold

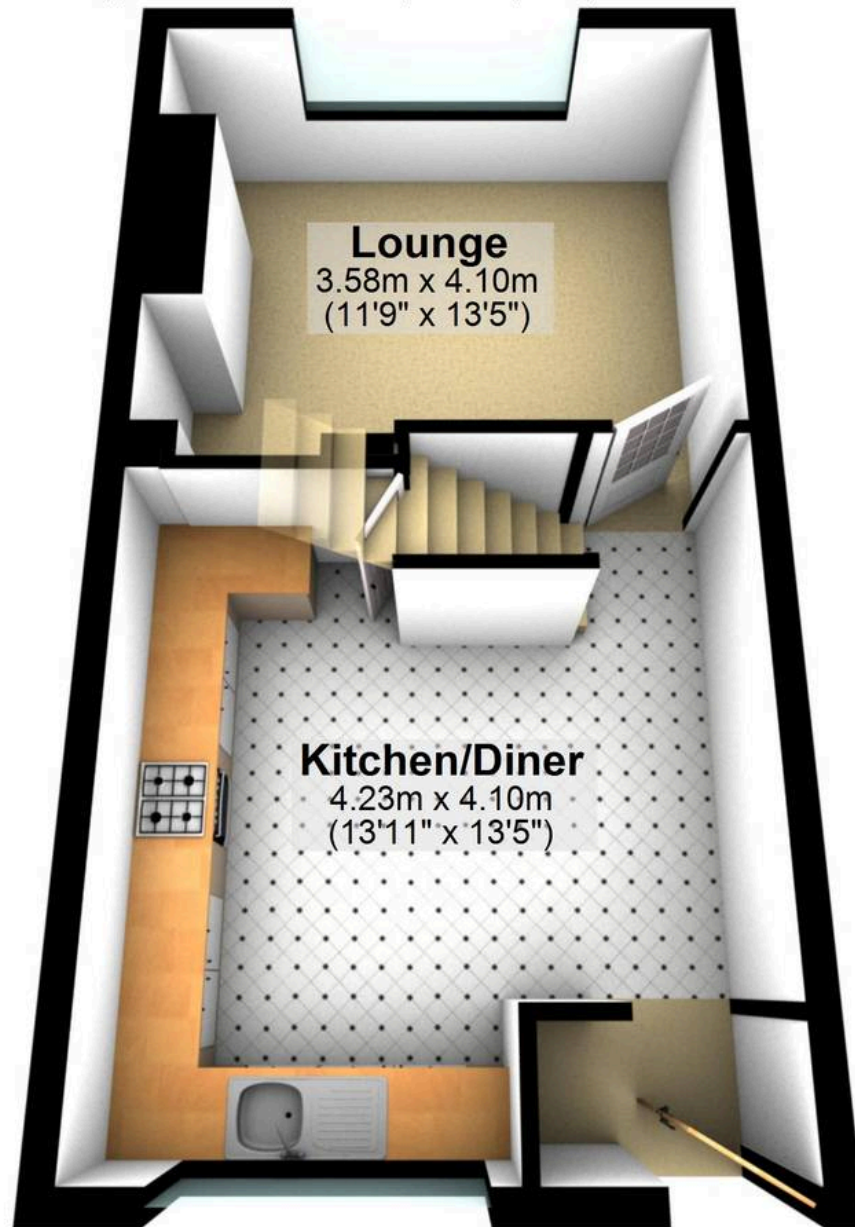
- TWO BEDROOMED MID-TERRACED UPPER FLOOR MAISONETTE
- NO ONWARD CHAIN
- WELL PRESENTED AND DECEPTIVELY SPACIOUS
- PERFECT FOR FIRST TIME BUYERS
- CLOSE TO WEALTH OF LOCAL AMENITIES
- GREAT TRANSPORT LINKS
- REPUTABLE LOCAL SCHOOLS
- FREEHOLD PROPERTY
- EXCELLENT BUY TO LET OPPORTUNITY
- PRIVATE GARDEN





Ground Floor

Approx. 32.3 sq. metres (347.3 sq. feet)



First Floor

Approx. 32.4 sq. metres (348.8 sq. feet)



Total area: approx. 64.7 sq. metres (696.1 sq. feet)

All measurements are approximate
Plan produced using PlanUp.



WHITEHORNS

Buy. Sell. Let. Relax!

0114 268 8533
info@whitehorns.com
www.whitehorns.com