



WHITEHORNS

Buy. Sell. Let. Relax!

0114 268 8533
info@whitehorns.com
www.whitehorns.com

98 Hallamshire Road, Lodege Moor

Sheffield

Guide Price £625,000 - £650,000

98 Hallamshire Road

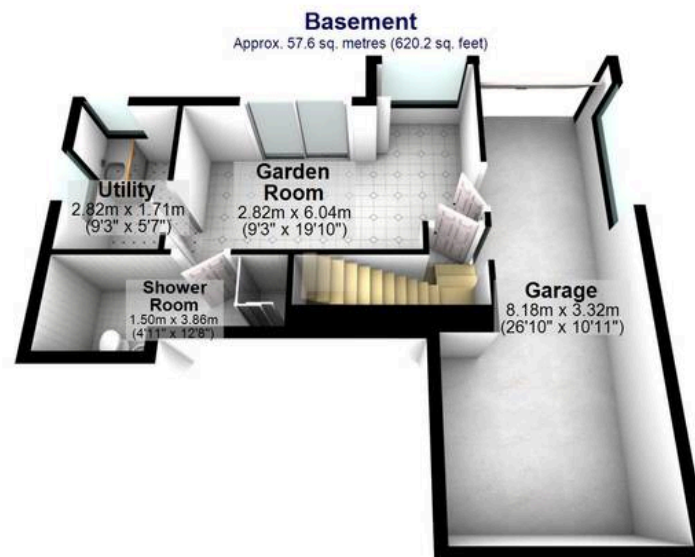
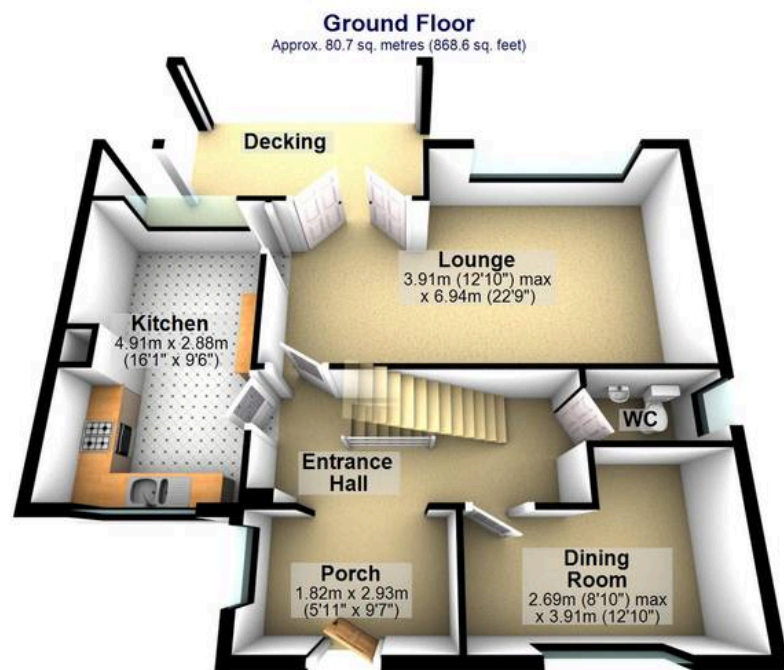
Lodge Moor, Sheffield

This incredibly rare opportunity to market a property of this size presents a stunning four-bedroom, two-bathroom detached family home boasting captivating views over the valley towards Ringinglow and beyond. Nestled in the heart of the ultra-popular residential suburb of Lodge Moor on the south-west side of the city, this pitch-perfect residence is ideal for the growing family market seeking their forever home. With excellent schooling catchments including both Hallam Junior and Tapton Secondary, this property offers three incredible floors of flexible accommodation spanning an impressive 2,137 sq feet. Conveniently located for easy access to principal hospitals, universities, and a plenty of local amenities, this home is a true gem in a sought-after location. Council Tax band: E Tenure: Leasehold

- INCREDIBLY RARE OPPORTUNITY TO MARKET FOR A PROPERTY OF THIS SIZE
- FOUR SPACIOUS BEDROOMS AND TWO BATHROOMED DETACHED FAMILY HOME
- STUNNING VIEWS OVER THE VALLEY TOWARDS RINGINGLOW AND BEYOND
- PITCH PERFECT FOR THE GROWING FAMILY MARKET LOOKING FOR A FOREVER HOME
- EXCELLENT SCHOOLING CATCHMENTS INCLUDING BOTH HALLAM JUNIOR AND TAPTON SECONDARY
- HEART OF THIS ULTRA POPULAR RESIDENTIAL SUBURB OF LODGE MOOR ON THE SOUTH WEST OF THE CITY
- THREE INCREDIBLE FLOORS OF FLEXIBLE ACCOMMODATION TOTALLING AN IMPRESSIVE 2,137 SQ







Total area: approx. 198.6 sq. metres (2137.5 sq. feet)

All measurements are approximate
Plan produced using PlanUp.