



**74 Waltheof Road, Manor**  
Sheffield

**Guide Price £110,000 - £120,000**



# 74 Waltheof Road

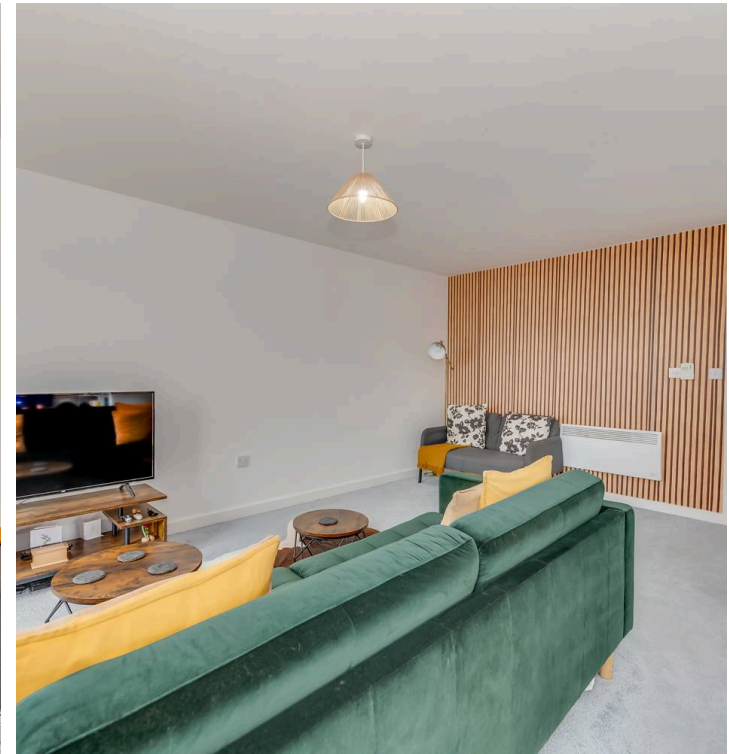
Manor, Sheffield

A absolutely stunning, immaculately presented and very well proportioned two double bedroom top floor apartment. Finished internally to a super high standard with no expense spared to create this beautiful contemporary vibe that is sure to be a hit with the first time buyers and professional couple alike. With newly installed kitchen and bathroom together with numerous other bespoke finishing touches, this fabulous apartment also enjoys allocated parking bay, visitor bays and wonderful far reaching views over the city stand beyond. Located close to numerous local amenities, excellent public transport links are within easy access as is central Sheffield and commuting motorway networks. It's easy to say that viewing is advised to do full justice to the finish on offer of this light and spacious property.

VALUER Andy Robinson

Council Tax band: A Tenure: Leasehold

- IMMACULATELY PRESENTED STUNNING TWO DOUBLE BEDROOM TOP FLOOR APARTMENT
- RECENTLY FINISHED TO AN EXCEPTIONALLY HIGH STANDARD WITH NO EXPENSE SPARED
- NEWLY FITTED KITCHEN BATHROOM DECORATION AND FLOORING
- ALLOCATED PRIVATE NUMBERED PARKING BAY SECURE INTERCOM ENTRANCE SYSTEM
- CONTEMPORARY DESIGN AND FEEL THROUGHOUT THAT REALL NEEDS TO BE VIEWED TO BE FULLY APPRECIATED
- EXCELLENT LOCATION CLOSE TO AMENITIES

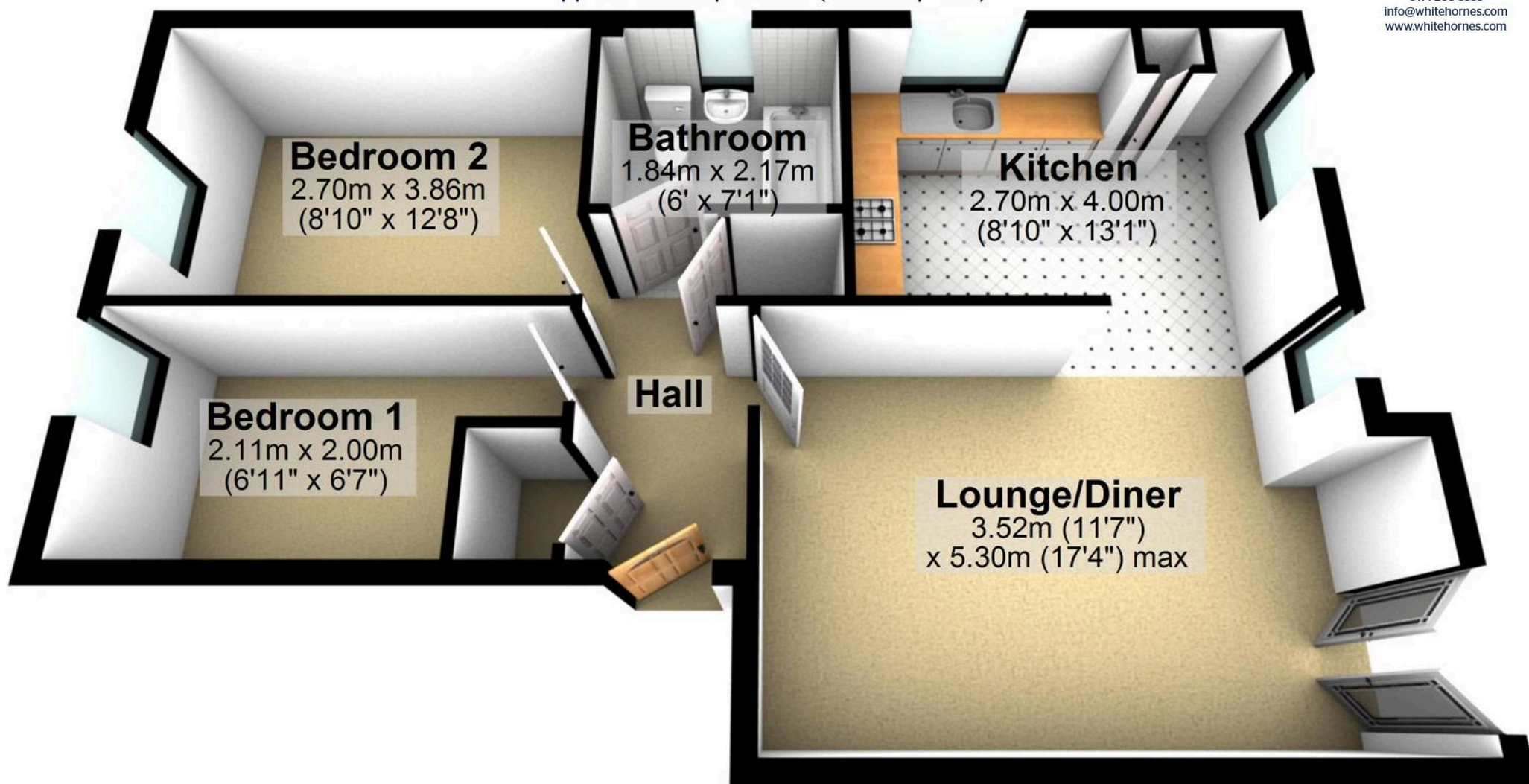






## Top Floor

Approx. 58.2 sq. metres (626.6 sq. feet)



Total area: approx. 58.2 sq. metres (626.6 sq. feet)

All measurements are approximate  
Plan produced using PlanUp.