

6 Phoenix Court, High Lane
Sheffield

Guide Price **£999,995**

6 Phoenix Court

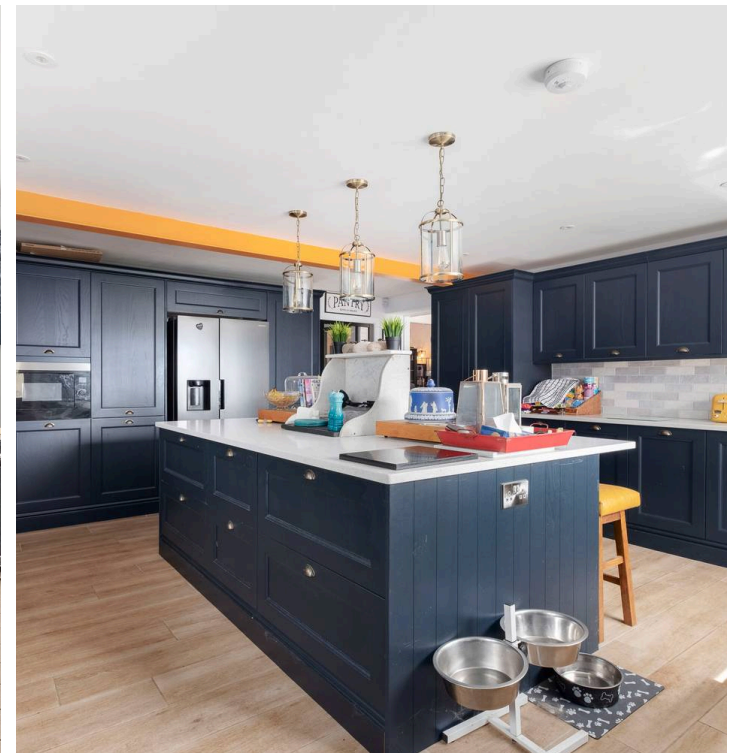
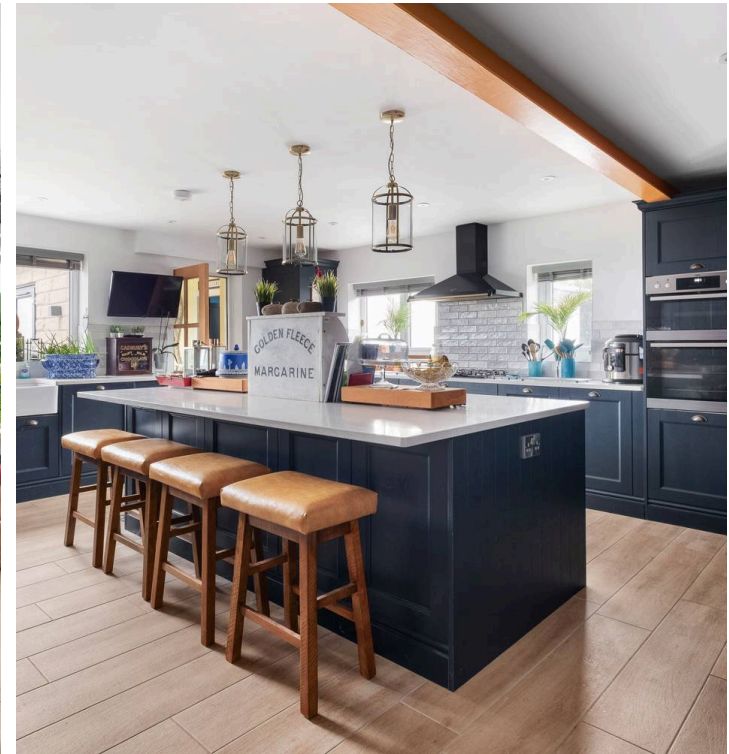
High Lane, Sheffield

Presenting a once in a life time opportunity to purchase this truly stunning five bedroomed, three-bathroom link-detached family home. Situated on this private, semi-rural cul-de-sac in the heart of Ridgeway. This deceptively large property totals an impressive 3,343 sq. ft. of light and spacious accommodation and briefly consists of kitchen/breakfast room, dining room, sitting room, lounge, utility room, office room, five double bedrooms, two dressing rooms, three bathrooms and two downstairs w/c's. To the rear is a fantastic, private garden with a unique outside bar and benefitting from incredible views over the countryside. Boasting a large driveway with gated access allowing secure parking for several vehicles. Surrounded by numerous local amenities, green spaces and local schools including Ridgeway Primary School.

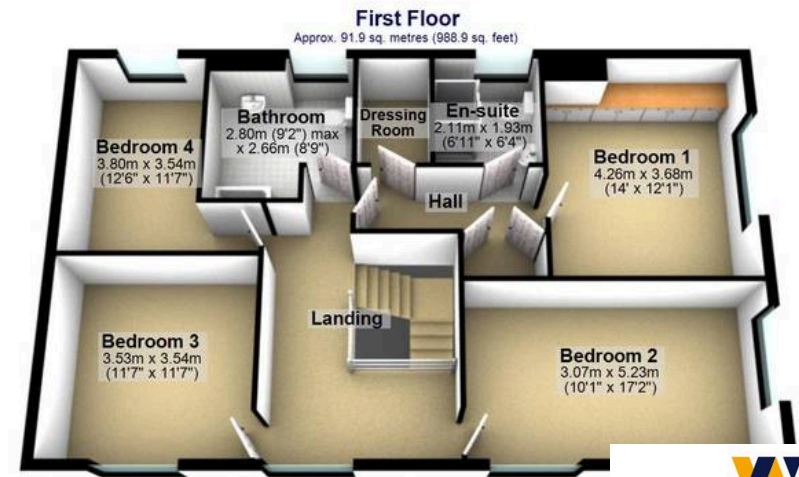
Council Tax band: F

Tenure: Freehold

- SUPERB FIVE BEDROOM SEMI-DETACHED FAMILY HOME
- LIGHT AND BRIGHT ACCOMMODATION TOTALLING AN IMPRESSIVE 3,343 SQ FT
- DECEPTIVELY LARGE REAR GARDEN WITH STUNNING VIEWS OVER THE COUNTRYSIDE
- PERFECT HOME FOR THE GROWING FAMILY MARKET
- PRIVATE AND GATED DRIVEWAY PROVIDING PARKING FOR SEVERAL VEHICLES
- LOCAL SCHOOLS INCLUDING RIDGEWAY PRIMARY SCHOOL
- SURROUNDED BY FANTASTIC GREEN SPACES
- HOST OF LOCAL AMENITIES NEARBY
- VIEWING ESSENTIAL TO DO FULL JUSTICE TO THIS







Total area: approx. 310.6 sq. metres (3343.2 sq. feet)

All measurements are approximate
Plan produced using PlanUp.

WHITEHORNES
Buy. Sell. Let. Relax!

0114 268 8533
info@whitehorne.com
www.whitehorne.com