



**WHITEHORNS**

Buy. Sell. Let. Relax!

0114 268 8533  
info@whitehorns.com  
www.whitehorns.com

**33 Tavistock Road, Nether Edge**

Sheffield

**Guide Price £200,000 - £210,000**

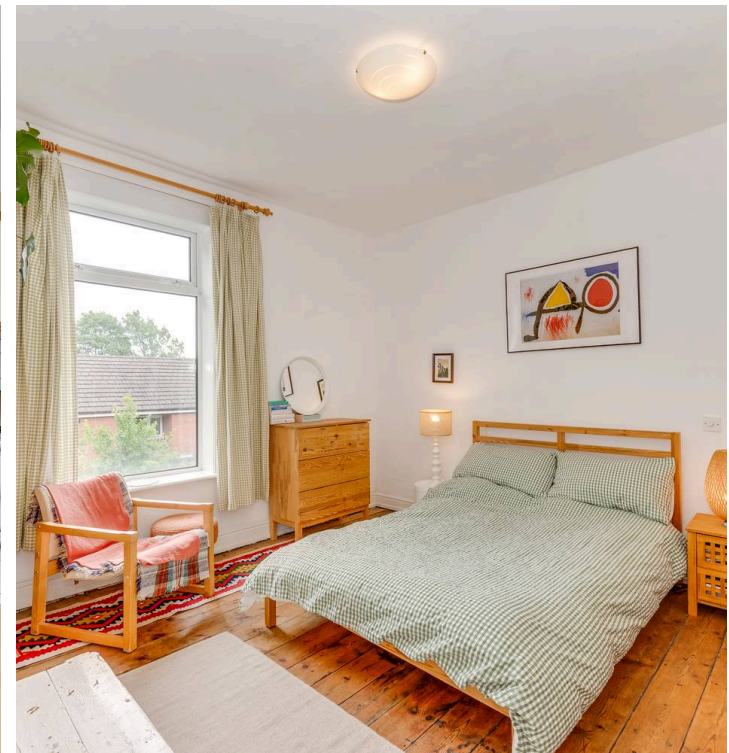
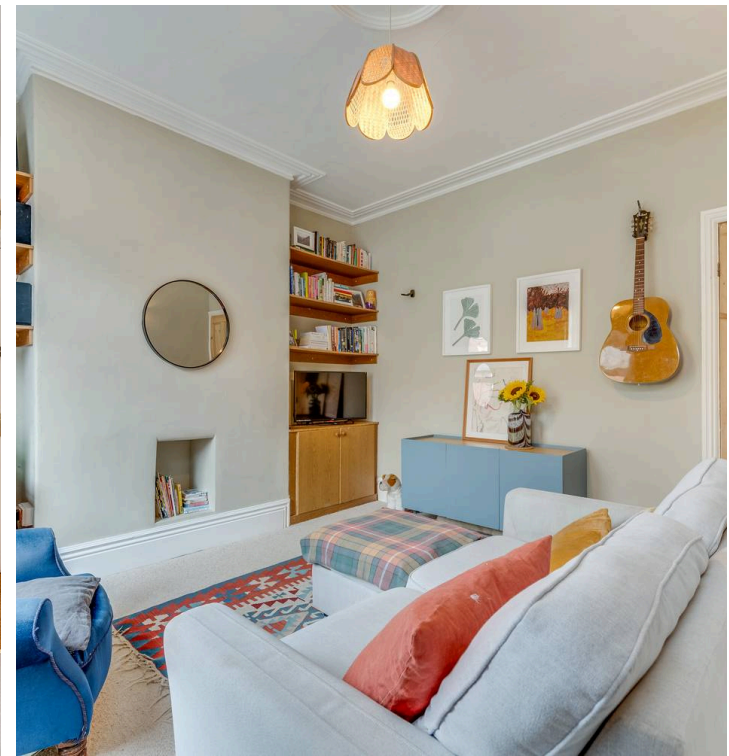


## 33 Tavistock Road

Nether Edge, Sheffield

This superb two double bedroom mid-terraced house offers a perfect blend of character and contemporary living in the heart of the ultra-popular Nether Edge district, situated in the southwest of the city. Benefitting from the passage to the first floor that accommodates the bathroom, this property is ideal for both professional couples and first-time buyers. The period features of this Victorian terraced home are complemented by modern amenities, offering light, bright, and spacious accommodation across two floors totalling an impressive 881 sq feet. The beautiful rear sunny garden provides a tranquil retreat, while easy on-road parking at the front adds convenience to the property. To truly appreciate the style and size on offer, viewing is absolutely essential. A short stroll takes you to the fashionable Nether Edge village centre or Abbeydale Road with there independent cafes, eateries and shops. Council Tax band: A Tenure: Freehold

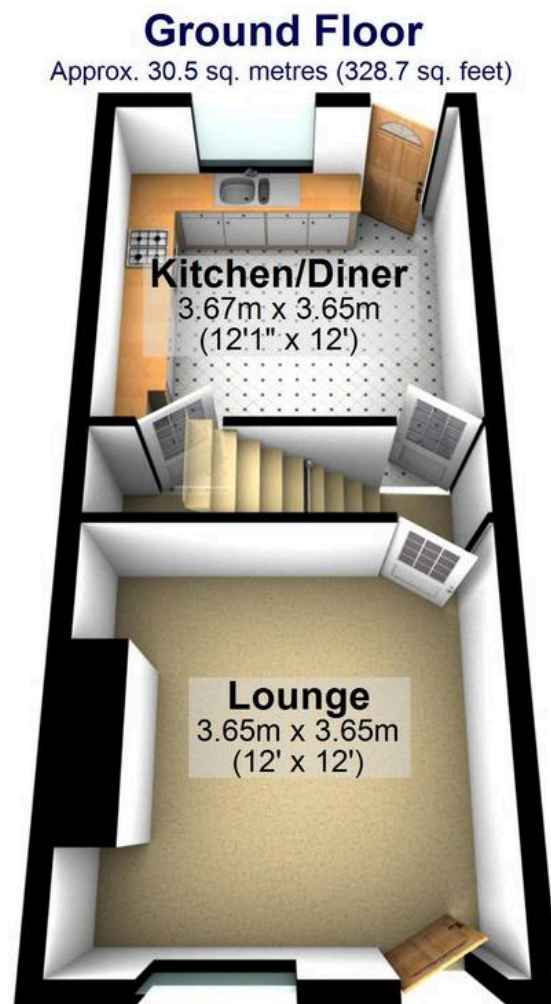
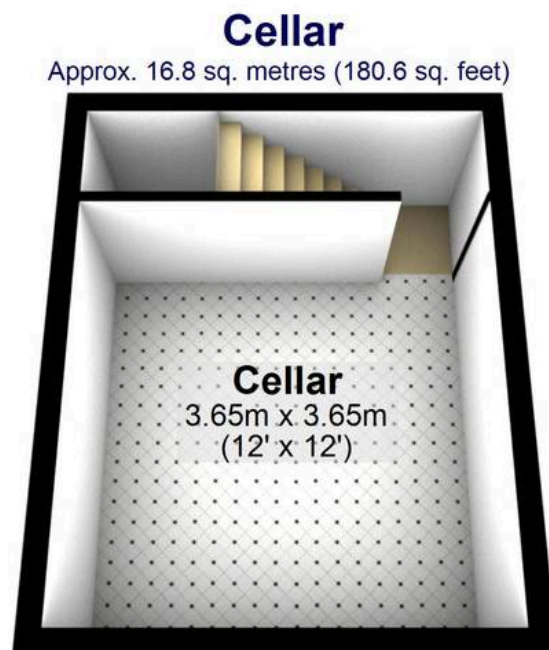
- SUPERB TWO DOUBLE BEDROOM MID VICTORIAN TERRACED
- BENEFITTING FROM THE PASSAGEWAY TO FIRST FLOOR ACCOMMODATING THE BATHROOM
- ABSOLUTELY PERFECT FOR THE PROFESSIONAL COUPLE OR THE FIRST TIME BUYERS ALIKE
- HEART OF ULTRA POPULAR NETHER EDGE ON THE SOUTH WEST OF THE CITY
- BEAUTIFUL REAR SUNNY GARDEN AND EASY ON ROAD PARKING TO THE FRONT
- VIEWING ABSOLUTELY ESSENTIAL TO FULLY APPRECIATE THE STYLE AND SIZE ON OFFER
- SHORT STROLL TO FASHIONABLE NETHER EDGE VILLAGE FEEL CENTRE
- ABBEYDALE ROAD INDEPENDENT CAFES EATERIES AND SHOPS ON THE DOORSTEP











Total area: approx. 81.9 sq. metres (881.8 sq. feet)

All measurements are approximate  
Plan produced using PlanUp.