



WHITEHORSES

Buy. Sell. Let. Relax!

0114 268 8533
info@whitehorses.com
www.whitehorses.com

16 Delf Street, Heeley

Sheffield

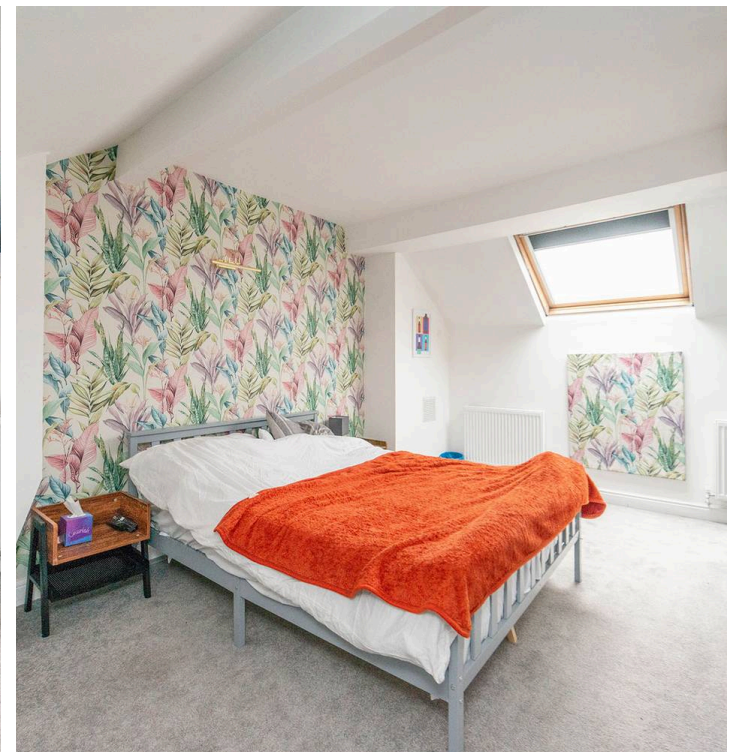
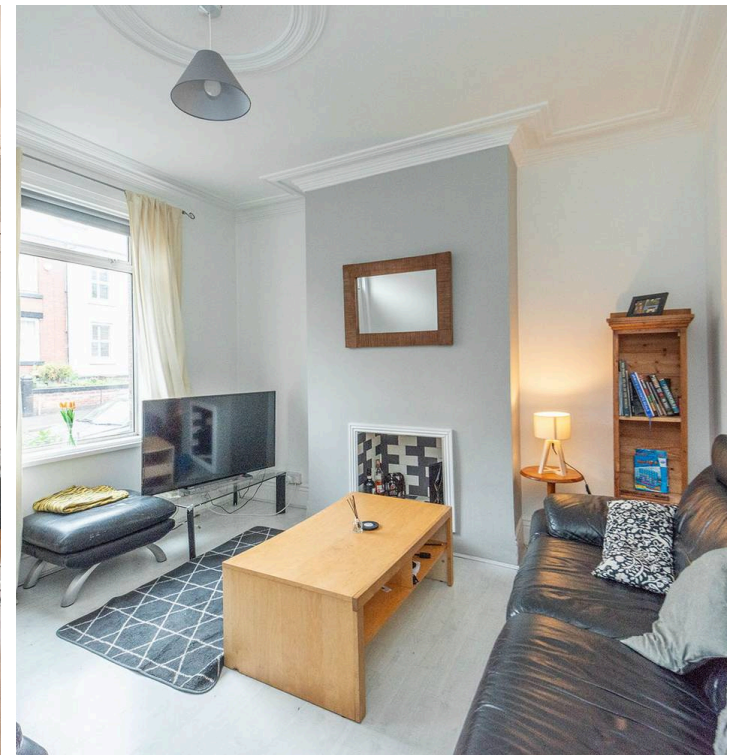
Guide Price £215,000

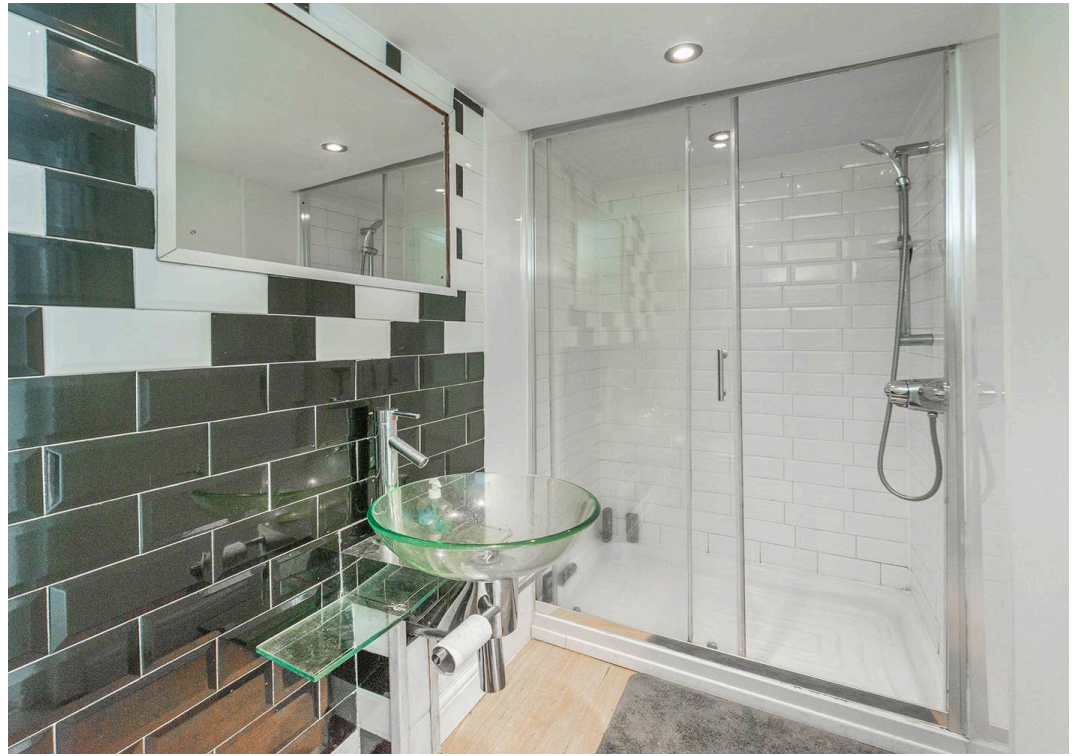
16 Delf Street

Heeley, Sheffield

A excellent three bedroom, two bathroom mid Victorian terraced, perfectly situated in the heart of fashionable Heeley, this outstanding home offers a fantastic opportunity for both professional couples and first-time buyers alike. Boasting three floors of accommodation spread across an impressive 1,241 square feet, this property is available to market with no upward chain and vacant possession. Enjoying proximity to numerous cafes, eateries, and shops, residents benefit from a vibrant community atmosphere. With easy access to Central Sheffield and the University campus, both are within walking distance. The property also presents fabulous views over the city centre and includes convenient on-road parking to the front as well as a rear garden featuring an outbuilding. An open-plan rear kitchen diner with garden access and a loft master bedroom with an en-suite shower room are amongst the property's key stand out features. Council Tax band: A Tenure: Leasehold

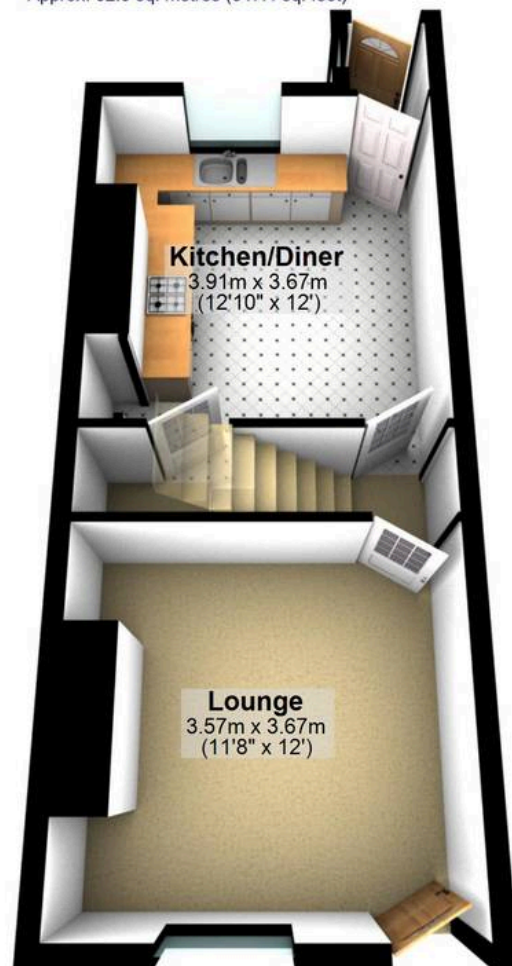
- EXCELLENT THREE BEDROOM TWO BATHROOM MID VICTORIAN TERRACED PROPERTY
- AVAILABLE TO MARKET WITH NO UPWARD CHAIN AND VACANT POSSESSION
- PERFECT FOR THE PROFESSIONAL COUPLE OR FIRST TIME BUYER ALIKE
- HEART OF FASHIONABLE HEELEY CLOSE TO NUMEROUS CAFES EATERIES AND SHOPS AND WALKING DISTANCE TO CENTRAL SHEFFIELD AND UNIVERSITY CAMPUS
- THREE FLOORS OF ACCOMMODATION





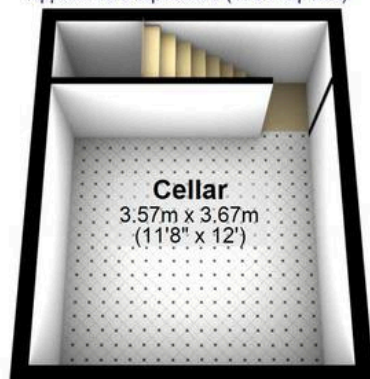
Ground Floor

Approx. 32.3 sq. metres (347.4 sq. feet)



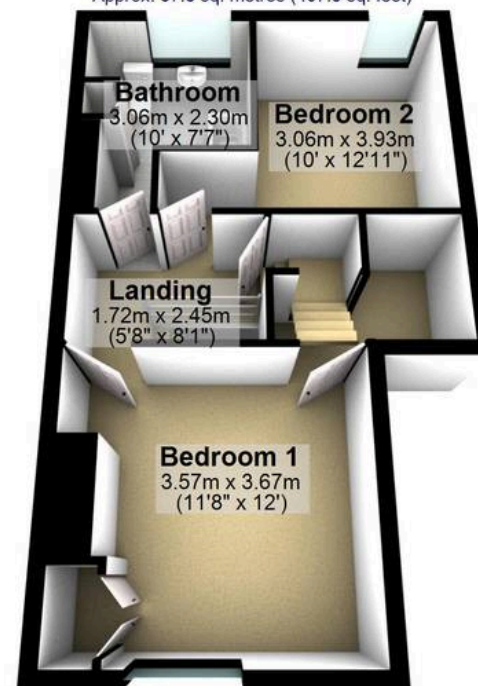
Cellar

Approx. 16.6 sq. metres (178.7 sq. feet)



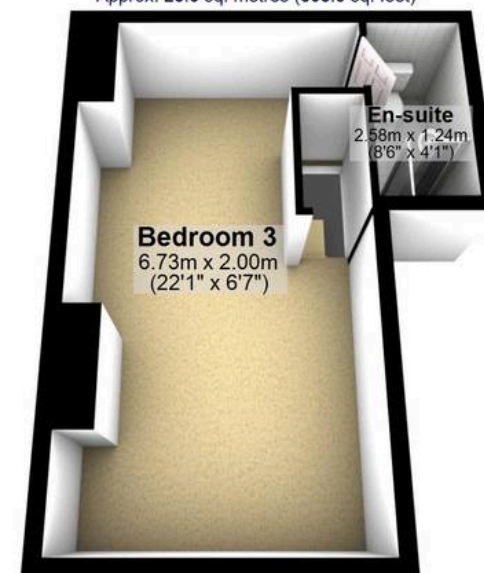
First Floor

Approx. 37.8 sq. metres (407.3 sq. feet)



Second Floor

Approx. 28.6 sq. metres (308.3 sq. feet)



Total area: approx. 115.4 sq. metres (1241.6 sq. feet)

All measurements are approximate
Plan produced using PlanUp.