



WHITEHORSES

Buy. Sell. Let. Relax!

0114 268 8533
info@whitehorses.com
www.whitehorses.com

23, South View Crescent., Nether Edge.

Sheffield.

Guide Price £225,000 - £235,000

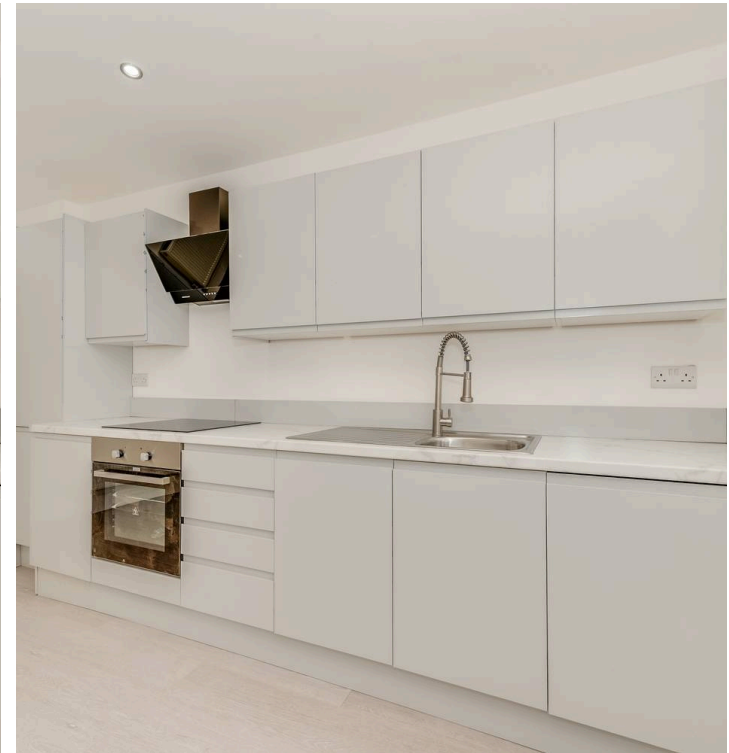
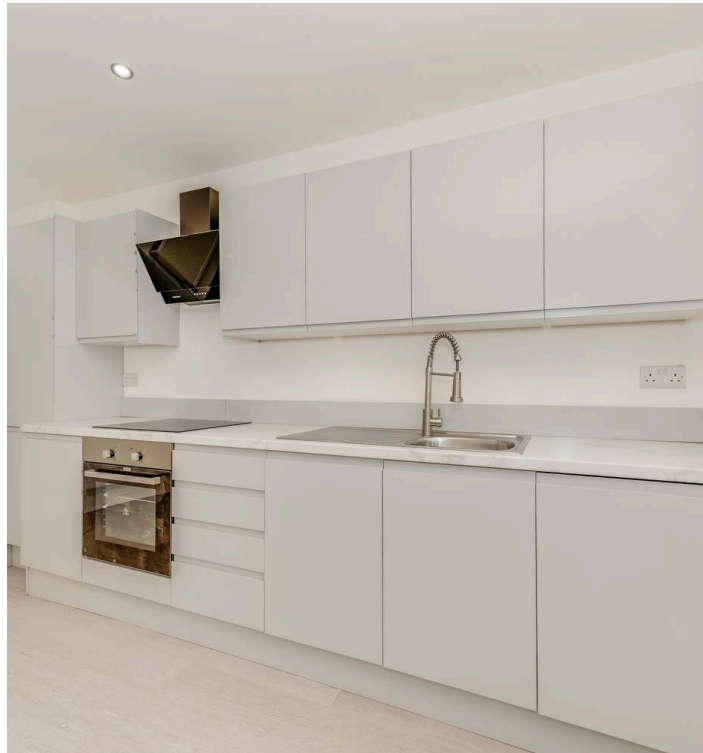
23, South View Crescent.

Nether Edge., Sheffield.

Introducing this stunning two, double bedroom mid-terraced house, a converted mid-Victorian gem recently finished to a super high standard throughout by the current vendors. Imbued with original features, including the floating stone staircase, combined with a contemporary twist, this property boasts three beautiful floors of accommodation. The super-sized landing offers versatility, perfect for utilisation as a work-from-home space. Number 23 is positioned at the heart of the ultra-popular Nether Edge on the southwest of the city. It benefits from excellent local schooling catchments, including Mercia Secondary. Residents will relish the convenience of the fashionable Nether Edge village centre and Abbeydale Road's independent amenities, all within easy walking distance, whilst principal hospitals and universities are also close by and The Peak District is up the road.

Council Tax band: A Tenure: Leasehold

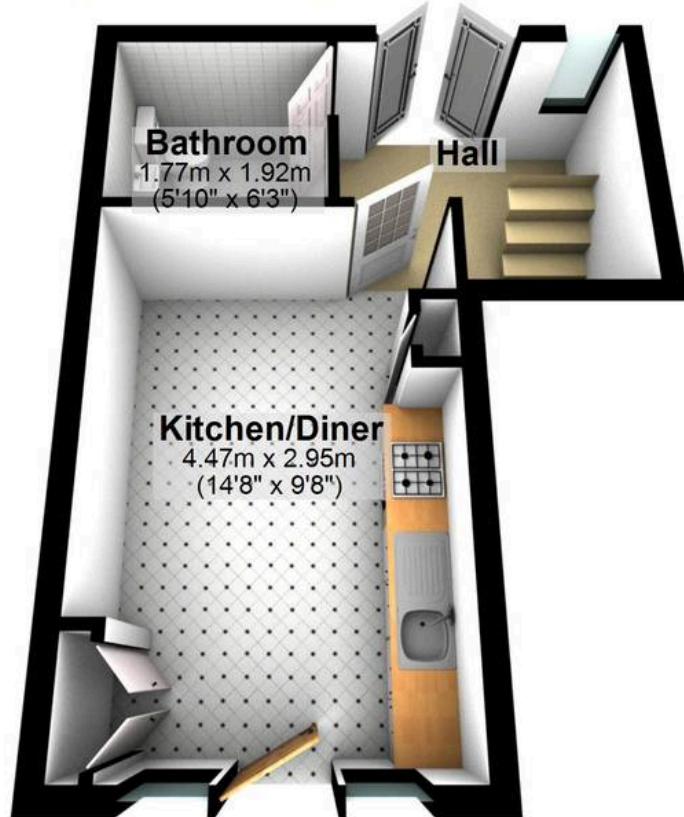
- STUNNING TWO DOUBLE BEDROOM CONVERTED MID VICTORIAN TERRACED
- RECENTLY FINISHED TO A SUPER HIGH STANDARD THROUGHOUT BY THE CURRENT VENDORS
- ORIGINAL FEATURES INCLUDING THE FLOATING STONE STAIRCASE COMBINED WITH A CONTEMPORARY TWIST
- THREE BEAUTIFUL FLOORS OF ACCOMMODATION TOGETHER WITH SUPER SIZED LANDING THAT CAN BE USED AS A WORK FROM HOME SPACE
- EXCELLENT LOCAL SCHOOLING CATCHMENTS INCLUDING MERCIA SECONDARY
- HEART OF ULTRA POPULAR NETHER EDGE ON THE SOUTH WEST OF THE CITY





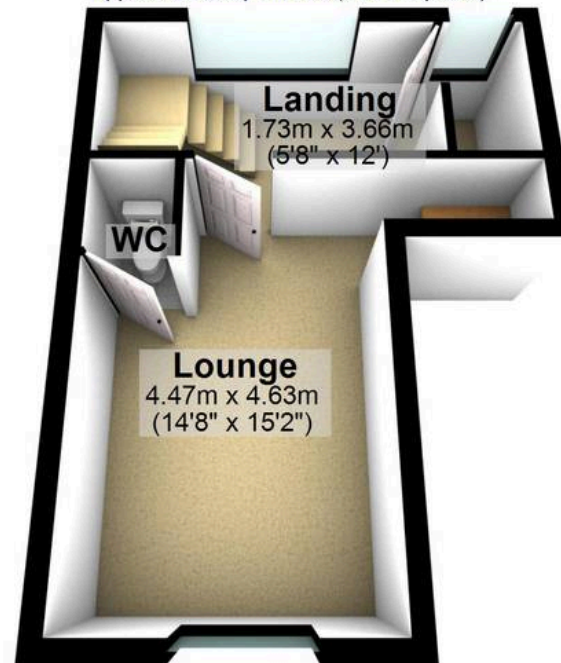
Ground Floor

Approx. 22.5 sq. metres (242.3 sq. feet)



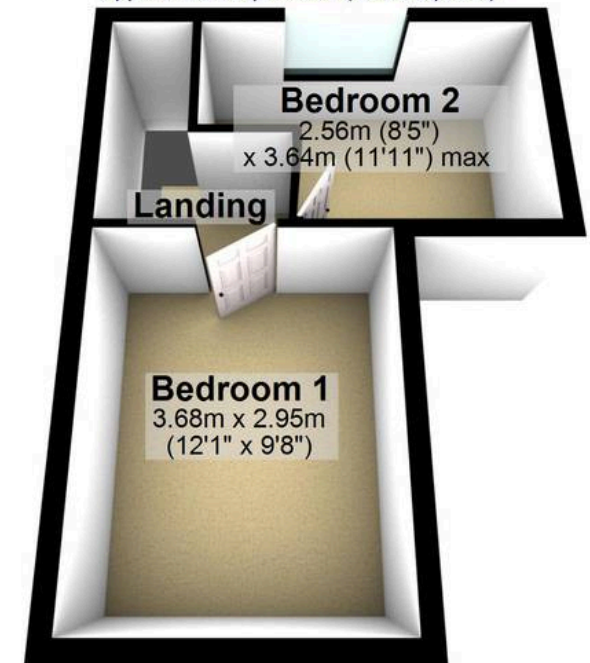
First Floor

Approx. 22.5 sq. metres (242.3 sq. feet)



Second Floor

Approx. 22.5 sq. metres (242.3 sq. feet)



Total area: approx. 67.5 sq. metres (726.9 sq. feet)

All measurements are approximate
Plan produced using PlanUp.