



WHITEHORNES

Buy. Sell. Let. Relax!

0114 268 8533
info@whitehorses.com
www.whitehorses.com

83 Thorpe House Rise, Norton Lees

Sheffield

Guide Price **£315,000**

83 Thorpe House Rise

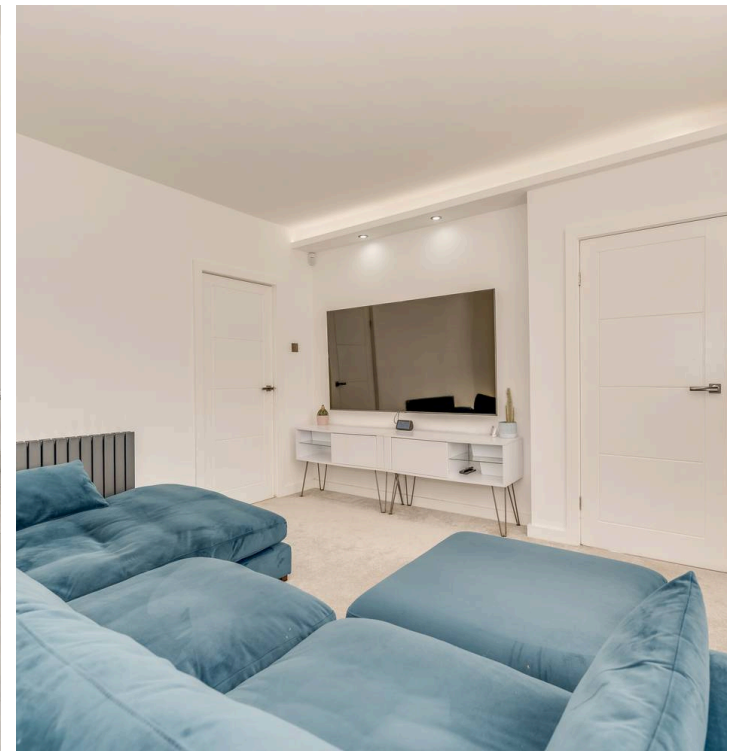
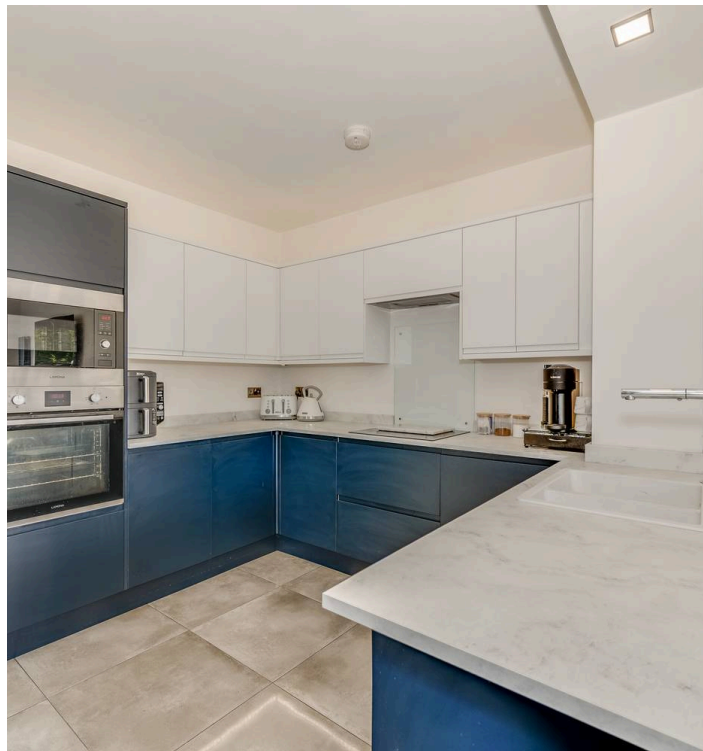
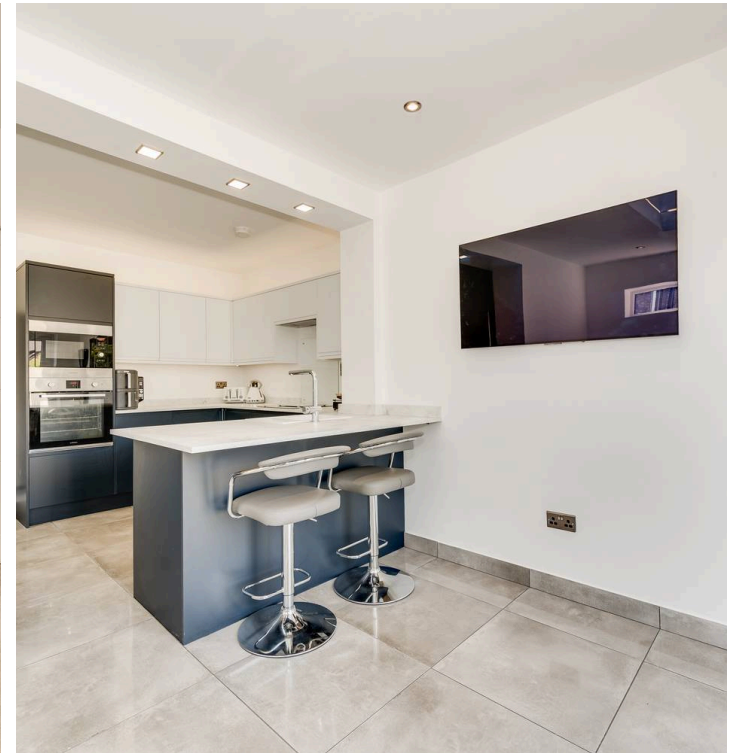
Norton Lees, Sheffield

An internal inspection is essential to truly appreciate both the standard of accommodation and space on offer in this immaculately presented and exceptionally well proportioned three bedroomed extended semi-detached family home. Having been extended and renovated throughout by the current owners to the very highest of standards number 83 offers a versatile range of accommodation arranged over two levels that will suit any buyer. Benefitting from its excellent location in this much sought after suburb, having not only Graves and Meersbrook Parks within easy walking distance but also a wealth of local shops and cafes as well as reputable local schools. The property briefly consists of entrance hallway, lounge, extended kitchen/dining room, downstairs WC, two double bedrooms, single bedroom and family bathroom. Outside is off road parking and to the rear is a family friendly garden with large recently constructed office/summer house.

Council Tax band: B

Tenure: Leasehold

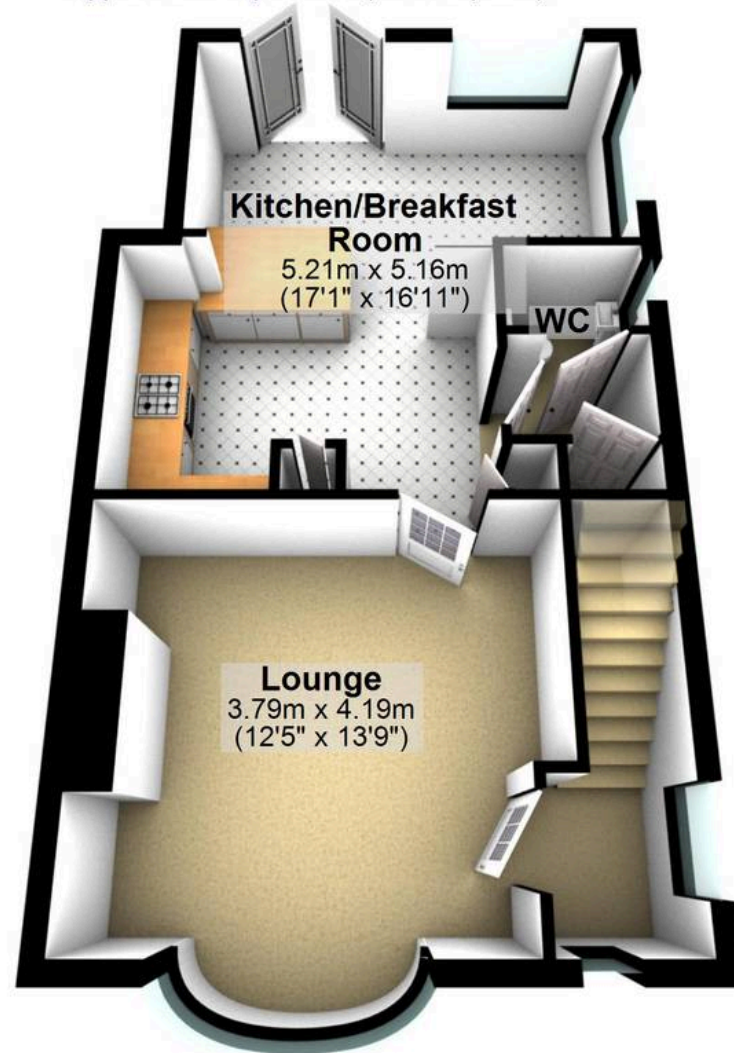
- THREE BEDROOMED SEMI-DETACHED FAMILY HOME
- TASTEFULLY EXTENDED TO THE REAR PROVIDING AMPLE OPEN PLAN LIVING SPACE
- EXCEPTIONAL FINISH THROUGHOUT
- PERFECT FOR GROWING FAMILIES
- NEW OFFICE/SUMMER HOUSE IN THE GARDEN
- OFFERS STUNNING VIEWS OVER SHEFFIELD
- MEERSBROOK AND GRAVES PARKS WITHIN EASY WALKING DISTANCE
- CLOSE TO A WEALTH OF LOCAL AMENITIES AND PUBLIC TRANSPORT LINKS
- OFFERED FOR SALE WITH NO ONWARD CHAIN





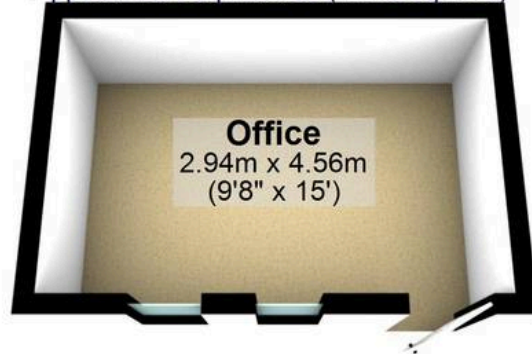
Ground Floor

Approx. 45.7 sq. metres (491.4 sq. feet)



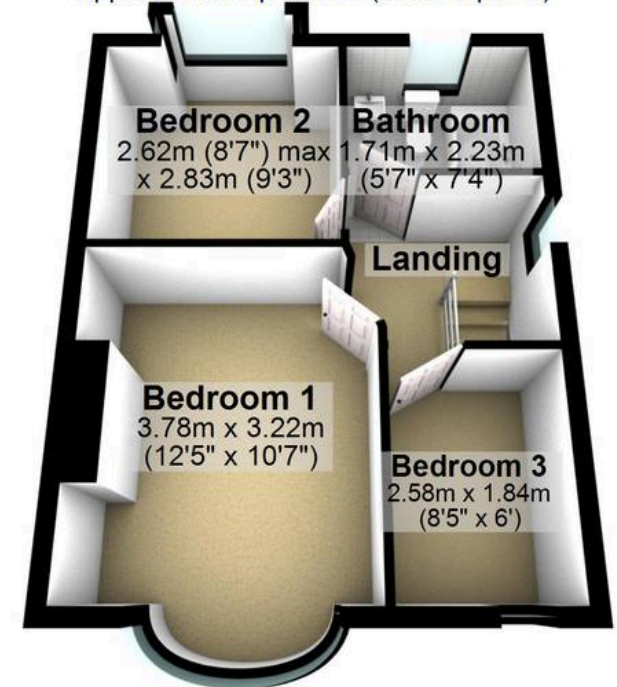
Outbuilding

Approx. 13.4 sq. metres (144.3 sq. feet)



First Floor

Approx. 34.2 sq. metres (367.6 sq. feet)



Total area: approx. 93.2 sq. metres (1003.3 sq. feet)

All measurements are approximate
Plan produced using PlanUp.

83 Thorpe House Rise