



WHITEHORSES

Buy. Sell. Let. Relax!

0114 268 8533
info@whitehorses.com
www.whitehorses.com



Apt 16, Union Forge, 33 Mowbray Street

Sheffield

Guide Price **£179,950**

Apartment 16

Union Forge, Sheffield

Located on this superb development in the heart of ultra-popular Kelham Island, this modern one bedroomed ground flat apartment is the ideal opportunity for the professional couple or investors alike. With numerous local amenities including popular shops, restaurants and bars all within walking distance. Briefly consisting of a superb, light and bright open plan living room and kitchen/diner, double bedroom with built in wardrobes, large bathroom and store room. Throughout is beautiful large windows allowing natural light within the apartment. To the outside is ample allocated parking. It is easy to say that viewing is essential to do full justice to this deceptively stunning apartment.

Council Tax band: A

Tenure: Leasehold

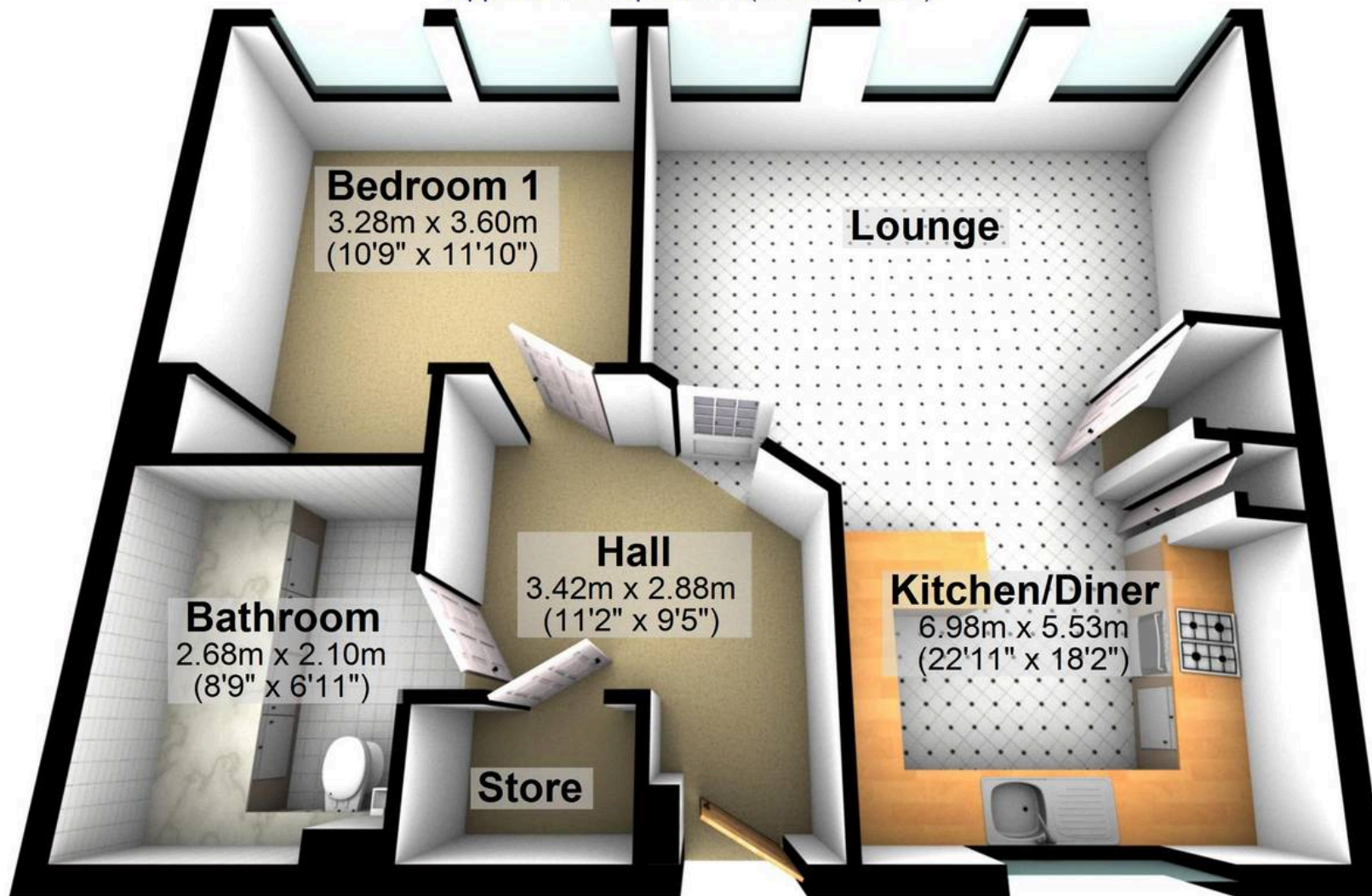
- ONE BEDROOMED GROUND FLOOR APARTMENT
- AVAILABLE WITH NO ONWARD CHAIN
- SITUATED IN THE HEART OF KELHAM ISLAND
- CLOSE BY TO NUMEROUS FANTASTIC AMENITIES
- IDEAL FOR THE PROFESSIONAL COUPLE OR INVESTORS ALIKE
- OPEN PLAN KITCHEN/LIVING SPACE
- LIGHT AND BRIGHT ACCOMMODATION TOTALLING 625 SQ FT
- VIEWING ESSENTIAL TO DO FULL JUSTICE
- LEASEHOLD FLAT AND COUNCIL TAX BAND A
- MODERN FEEL THROUGHOUT





Ground Floor

Approx. 58.1 sq. metres (625.1 sq. feet)



Total area: approx. 58.1 sq. metres (625.1 sq. feet)

All measurements are approximate
Plan produced using PlanUp.



WHITEHORNS

Buy. Sell. Let. Relax!

0114 268 8533
info@whitehorns.com
www.whitehorns.com