



18 Spoon Way, Stannington
Sheffield

Offers in Region of £450,000

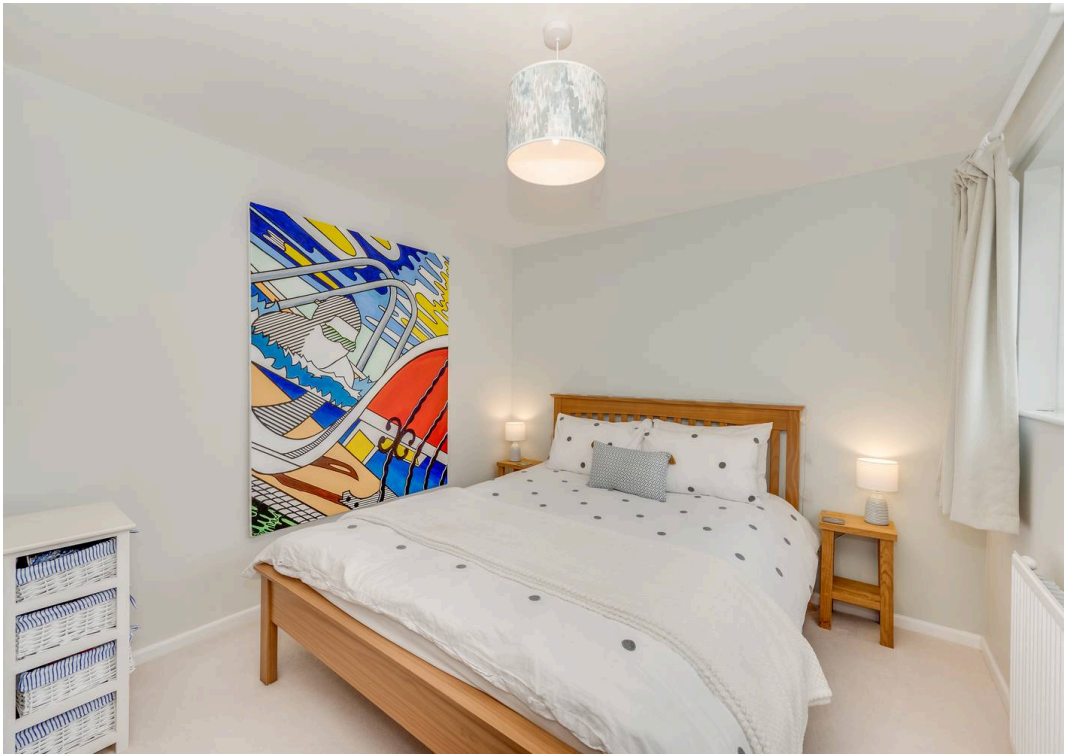
18 Spoon Way

Stannington, Sheffield

Presenting a remarkable opportunity to own a truly exceptional property, this stunning four-bedroom detached house boasts a stone-built family home exuding style and comfort. Offering an impressive total space of 1,293 square feet spread over two superb floors, this vendor has been meticulous with the finish to an exceptionally high standard. The interior showcases a newly fitted kitchen and bathroom, and the tastefully extended rear features a work-from-home office and cosy snug, perfect for modern living. Notably, the fabulous larger-than-expected private sunny garden at the rear offers picturesque views over the countryside, adding tranquillity to every-day life. Situated in the esteemed catchment areas of Nooks Lane and Stannington Primary, this residence is nestled on a quiet no-through road within a sought-after development in the heart of popular Stannington. Council Tax band: D Tenure: Leasehold

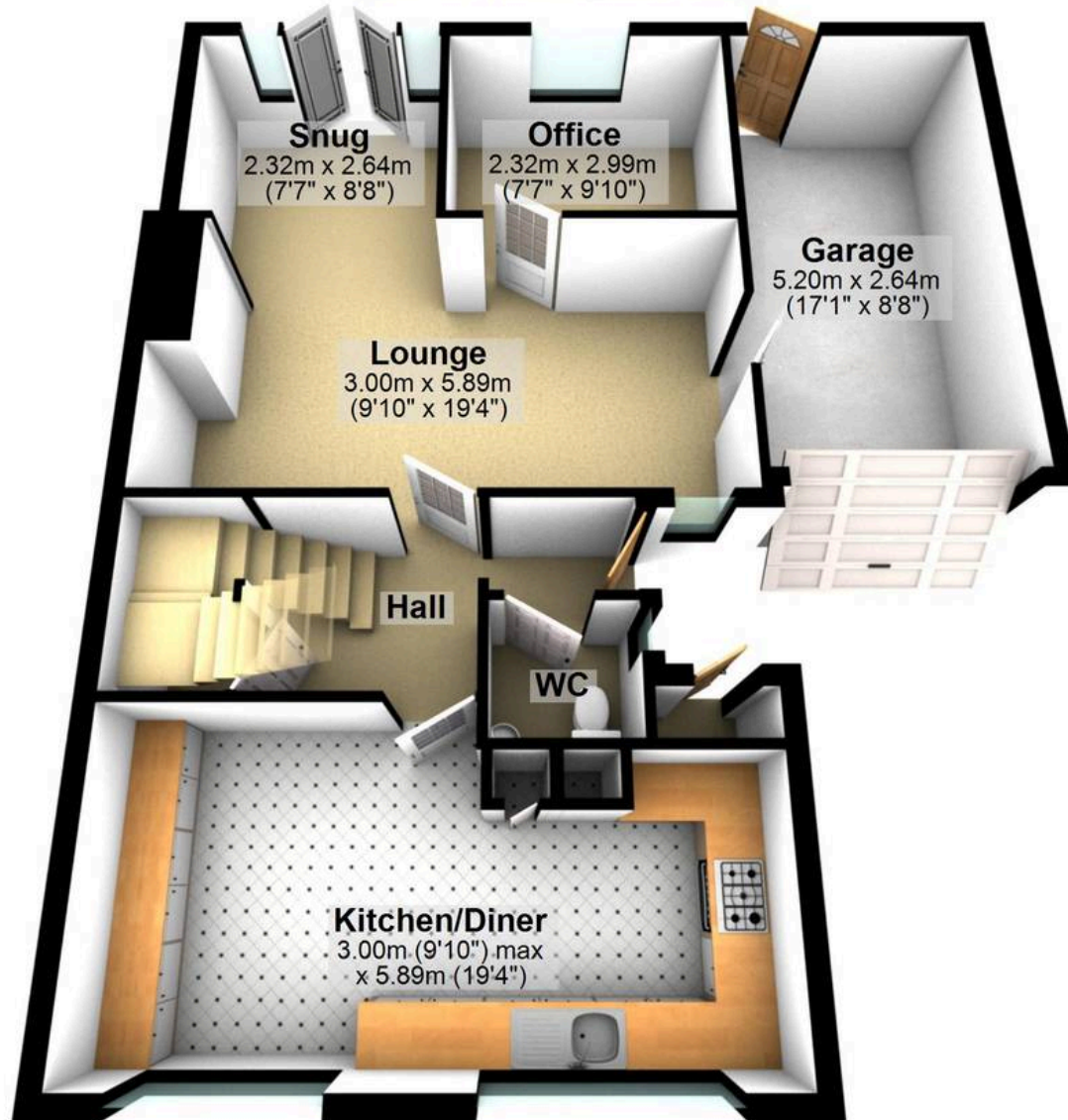
- STUNNING FOUR GOOD SIZED BEDROOMS STONE BUILT FAMILY HOME
- TWO SUPERB FLOORS OF ACCOMMODATION TOTALLING AN IMPRESSIVE 1,293 SQ FEET
- FINISHED INTERNALLY TO A SUPER HIGH STANDARD WITH NEWLY FITTED KITCHEN AND BATHROOM
- TASTEFULLY EXTENDED TO THE REAR TO CREATE A WORK FROM HOME OFFICE AND SNUG
- FABULOUS LARGER THAN EXPECTED REAR PRIVATE SUNNY GARDEN WITH VIEWS OVER THE COUNTRYSIDE
- EXCELLENT LOCAL SCHOOLING CATCHMENTS INCLUDING NOOKS LANE AND STANNINGTON PRIMARY
- QUIET TUCKED AWAY NO THROUGH ROAD ON THIS WELL SOUGHT AFTER DEVELOPMENT IN THE HEART OF POPULAR STANNINGTON





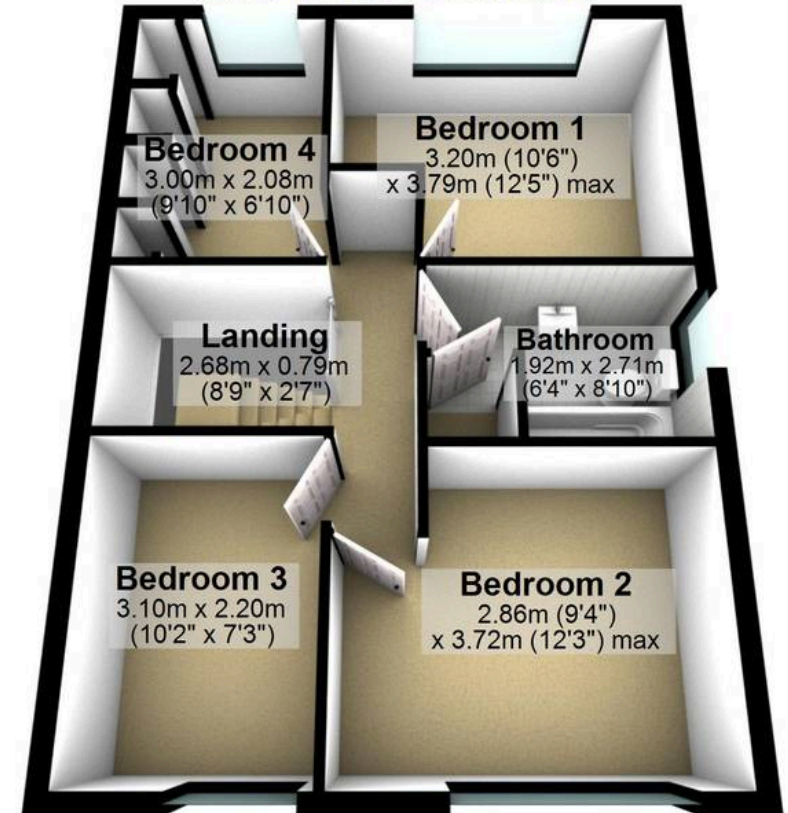
Ground Floor

Approx. 73.0 sq. metres (786.0 sq. feet)



First Floor

Approx. 47.1 sq. metres (507.3 sq. feet)



Total area: approx. 120.1 sq. metres (1293.3 sq. feet)

All measurements are approximate
Plan produced using PlanUp.

18 Spoon Way



WHITEHORSES

Buy. Sell. Let. Relax!

0114 268 8533
info@whitehorses.com
www.whitehorses.com