

22 Prescott Road, Sheffield

Sheffield

Guide Price **£230,000**

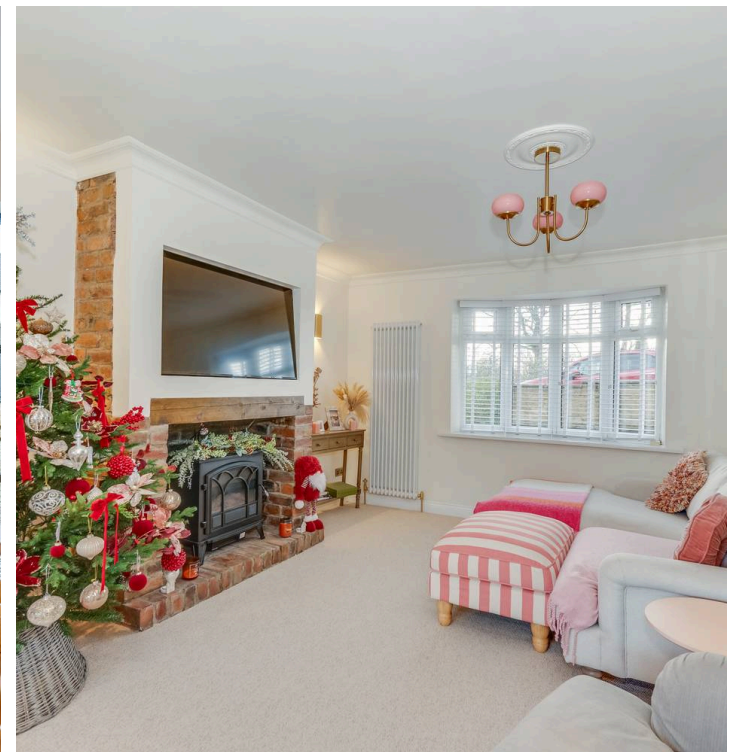
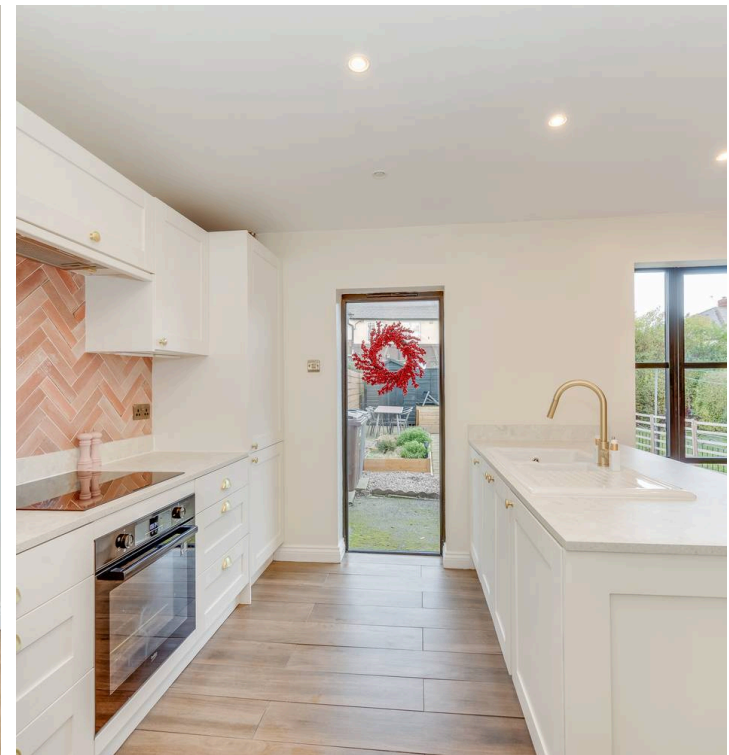
22 Prescott Road

Sheffield, Sheffield

Offered for sale is this truly deceptive two bedroom mid-terraced property, finished to a beautiful standard throughout this property presents modern and bright living. Perfect for first time buyers or professional couples alike this superb property briefly consists of an open plan, spacious kitchen/diner, light and cozy front lounge, master bedroom and double bedroom benefitting from built-in wardrobes and a family bathroom. To the outside, is a fantastic, low maintenance rear garden which has no through fare from neighboring properties and a decking area perfect for entertaining. Located on this residential road with numerous local amenities and transport links close by. Falling into catchment for Marlcliffe Primary School and Forge Valley Secondary School. It is easy to say that viewing is essential to do full justice. Council Tax band: A

Tenure: Freehold

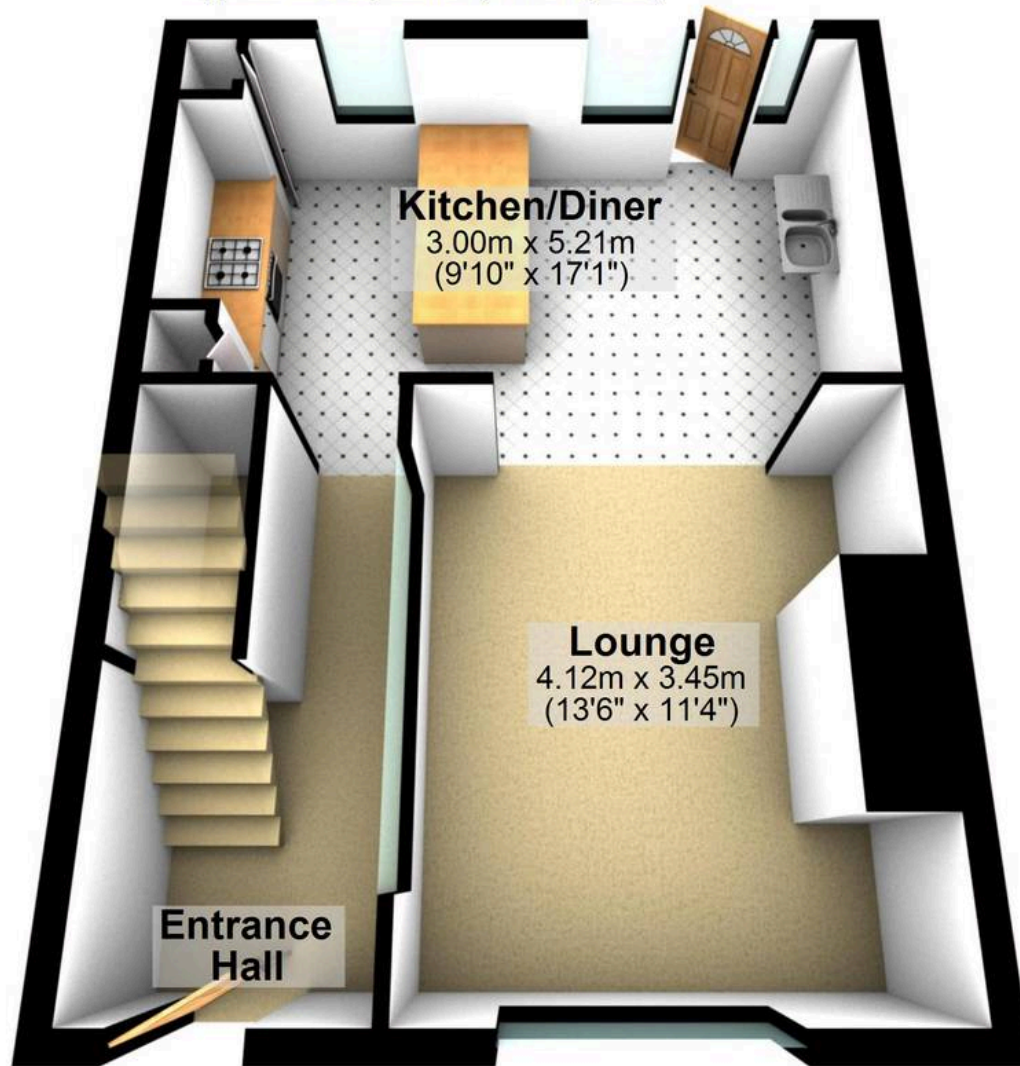
- STUNNING TWO BEDROOM MID-TERRACED HOUSE
- FINISHED TO A BEAUTIFUL STANDARD THROUGHOUT
- STUNNING OPEN PLAN KITCHEN/DINER
- PERFECT FOR FIRST TIME BUYERS OR PROFFESIONAL COUPLES ALIKE
- LOCATED CLOSEBY TO NUMEROUS AMENITIES AND TRANSPORT LINKS
- SUPERB REAR GARDEN WITH NO THOROUGH FARE FROM NEIGHBOURING PROPERTIES
- EASY AMPLE ON STREET PARKING
- TWO FLOORS OF LIGHT AND BRIGHT ACCOMMODATION TOTTALLING 829 SQ FT
- VIEWING ESSENTIAL TO DO FULL JUSTICE
- FREEHOLD PROPERTY, COUNCIL TAX BAND A AND EPC RATING C





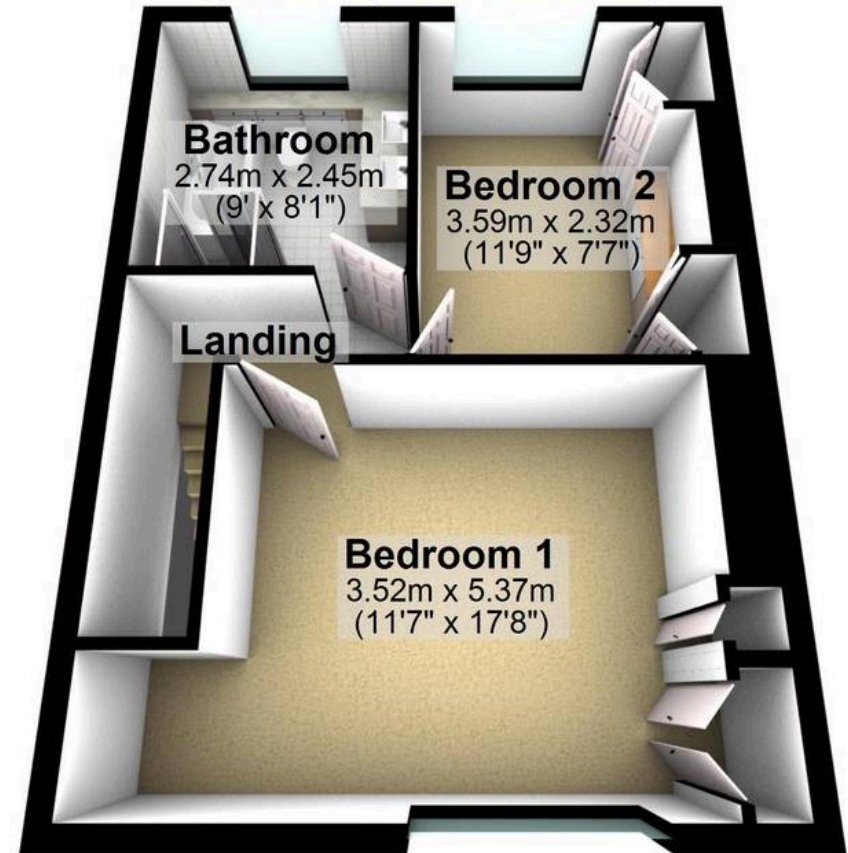
Ground Floor

Approx. 38.3 sq. metres (411.8 sq. feet)



First Floor

Approx. 38.8 sq. metres (417.2 sq. feet)



Total area: approx. 77.0 sq. metres (829.0 sq. feet)

All measurements are approximate
Plan produced using PlanUp.

22 PRESCOTT ROAD