



WHITEHORNS
Buy. Sell. Let. Relax!
0114 268 8533
info@whitehorns.com
www.whitehorns.com

5 Archibald Road, Nether Edge

Sheffield

Guide Price £325,000 - £350,000

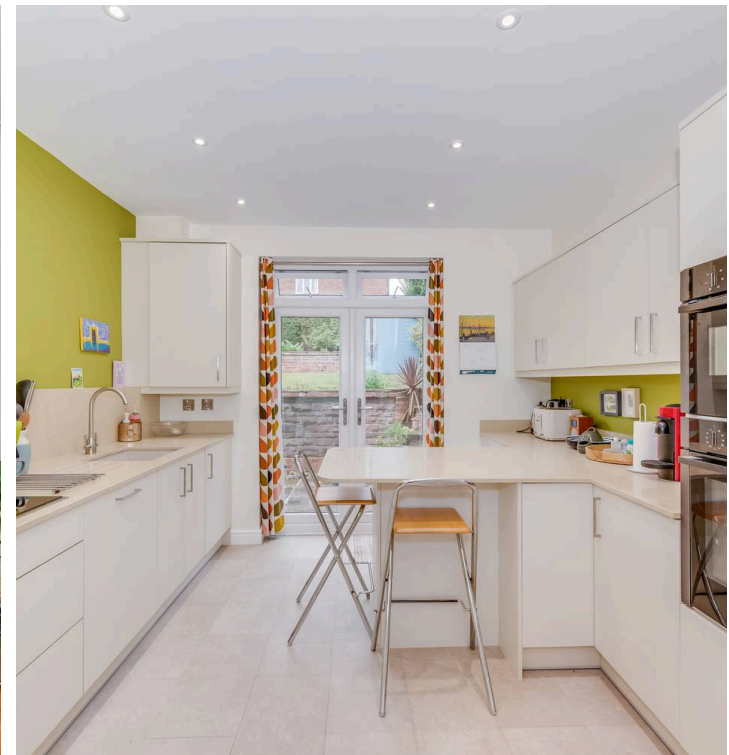
5 Archibald Road

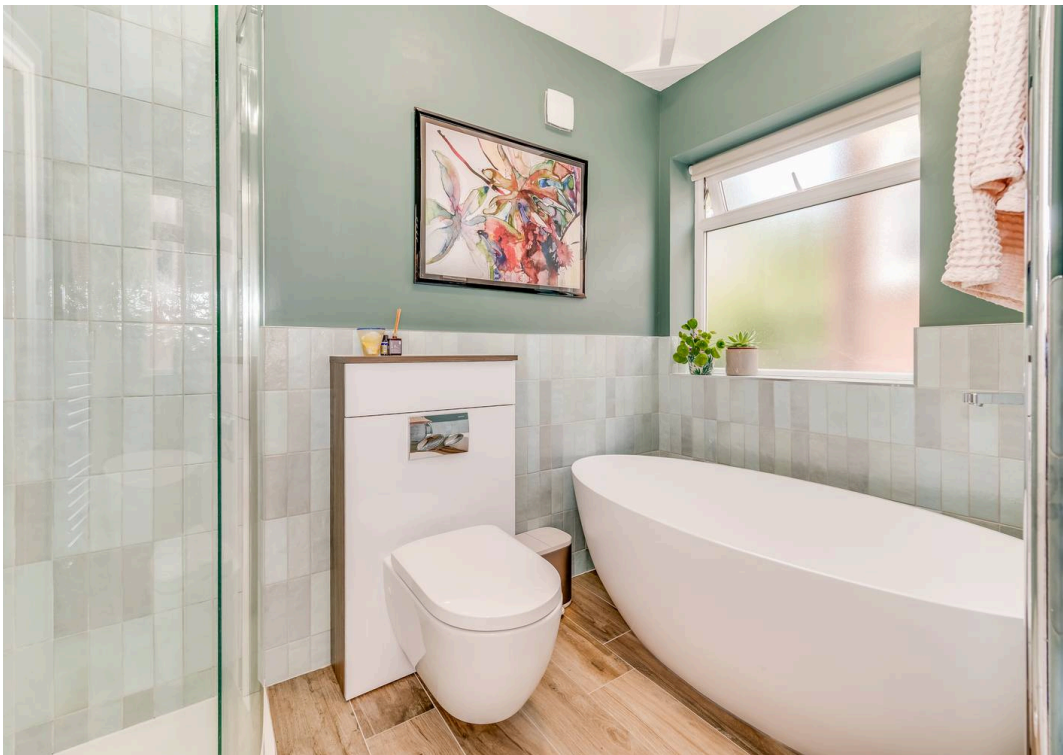
Nether Edge, Sheffield

An absolutely stunning immaculately presented and very well proportioned three-bedroom bay windowed semi-detached home that exudes luxury and sophistication. This property has been finished internally to an exceptionally high standard throughout by the current vendor, with no expense spared and a real flare for design. Contemporary design seamlessly merges with the original features, character, and charm, creating a harmonious living space. Situated on a slightly elevated position, this home offers a sense of privacy and boasts some wonderful views. The property falls in the catchment areas of Ofsted rated excellent schools, including both Mercia and High Storrs Secondary School, ideal for families with school-going children. Located on a quiet tucked away residential road within the vibrant heart of ultra-popular Nether Edge, towards the south-west of the city.

Council Tax band: B Tenure: Leasehold

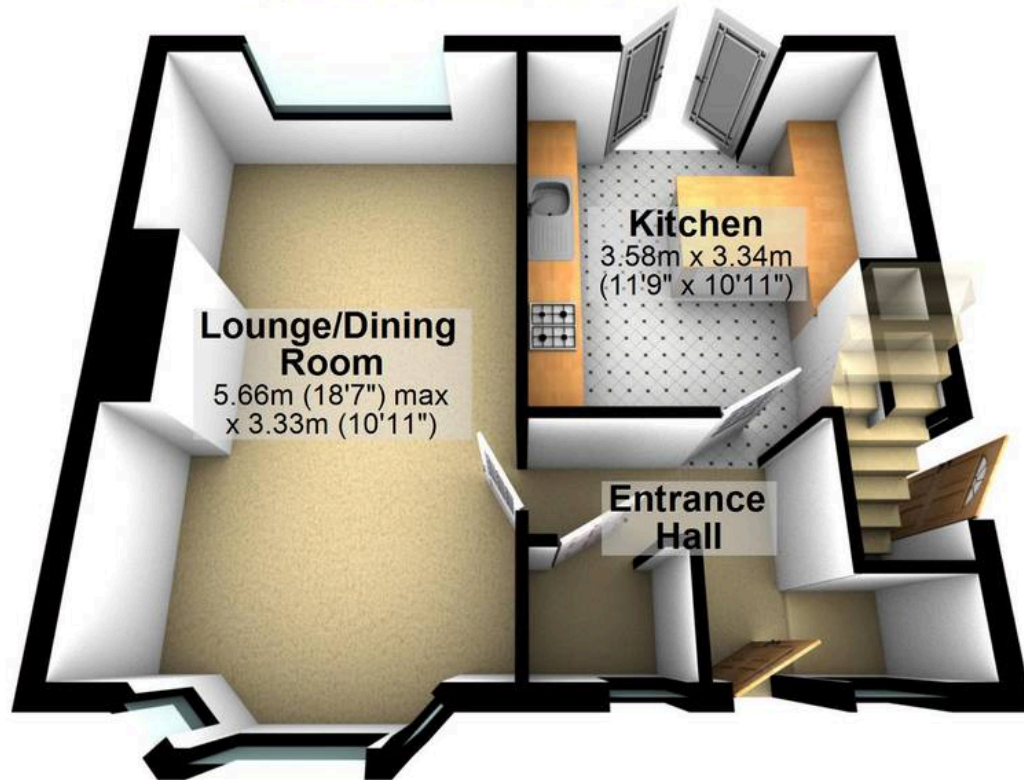
- ABSOLUTELY STUNNING IMMACULATLY PRESENTED THREE BEDROOM BAY WINDOWED SEMI-DETACHED HOME
- FINISHED INTERNALLY TO AN EXCEPTIONALLY HIGH STANDARD THROUGHOUT BY THE CURRENT VENDOR WITH NO EXPENSE SPARED AND WITH A REAL FLARE FOR DESIGN
- CONTEMPORARY DESIGNED MEETS WITH THE ORIGINAL FEATURES CHARACTER AND CHARM IN HARMONY
- SLIGHTLY ELEVATED POSITION THAT ENSURES PRIVACY AND SOME WONDERFUL VIEWS
- OFSTED RATED EXCELLENT SCHOOLING CATCHMENTS INCLUDING BOTH MERCIA AND HIGH STORRS SECONDARY





Ground Floor

Approx. 38.6 sq. metres (415.8 sq. feet)



First Floor

Approx. 38.6 sq. metres (415.8 sq. feet)



Total area: approx. 77.3 sq. metres (831.6 sq. feet)

All measurements are approximate
Plan produced using PlanUp.