



WHITEHORSES

Buy. Sell. Let. Relax!

0114 268 8533
info@whitehorses.com
www.whitehorses.com



5 Moorthorpe Green, Owlthorpe

Sheffield

Guide Price **£125,000**

5 Moorthorpe Green

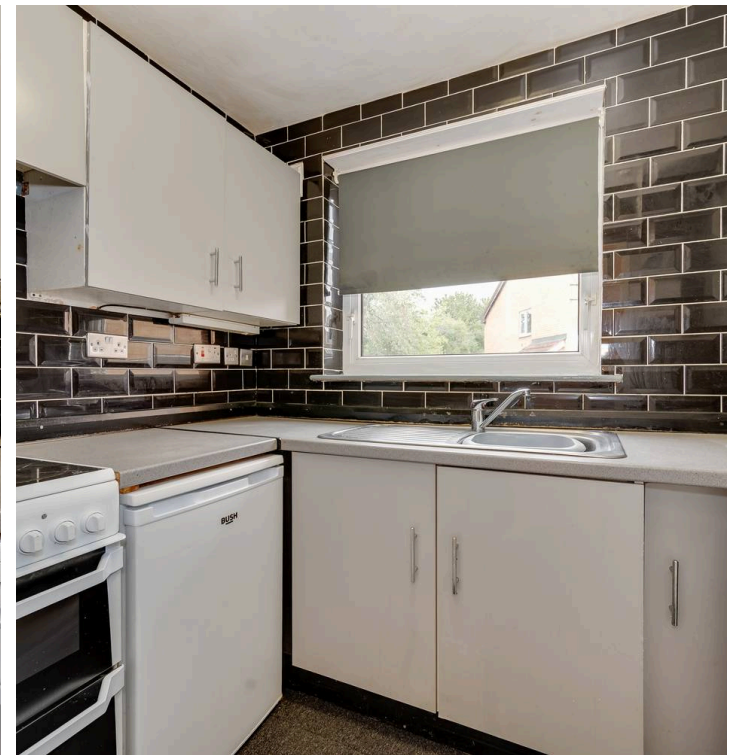
Owlthorpe, Sheffield

Perfect for first time buyers and buy to let investors alike is this spacious and well presented two bedroomed ground floor apartment. Available for sale with no onward chain and benefitting from not only its enviable location at the head of this quiet cul-de-saq but also fantastic transport links. Having been finished throughout to a great standard number 5 has access to the nearby wealth of local amenities as well as open green spaces and reputable local schools. Briefly consists of entrance porch, large living space, well appointed kitchen, two good sized bedrooms and family bathroom. Outside is off road parking and to the rear is a private garden.

Council Tax band: A

Tenure: Leasehold

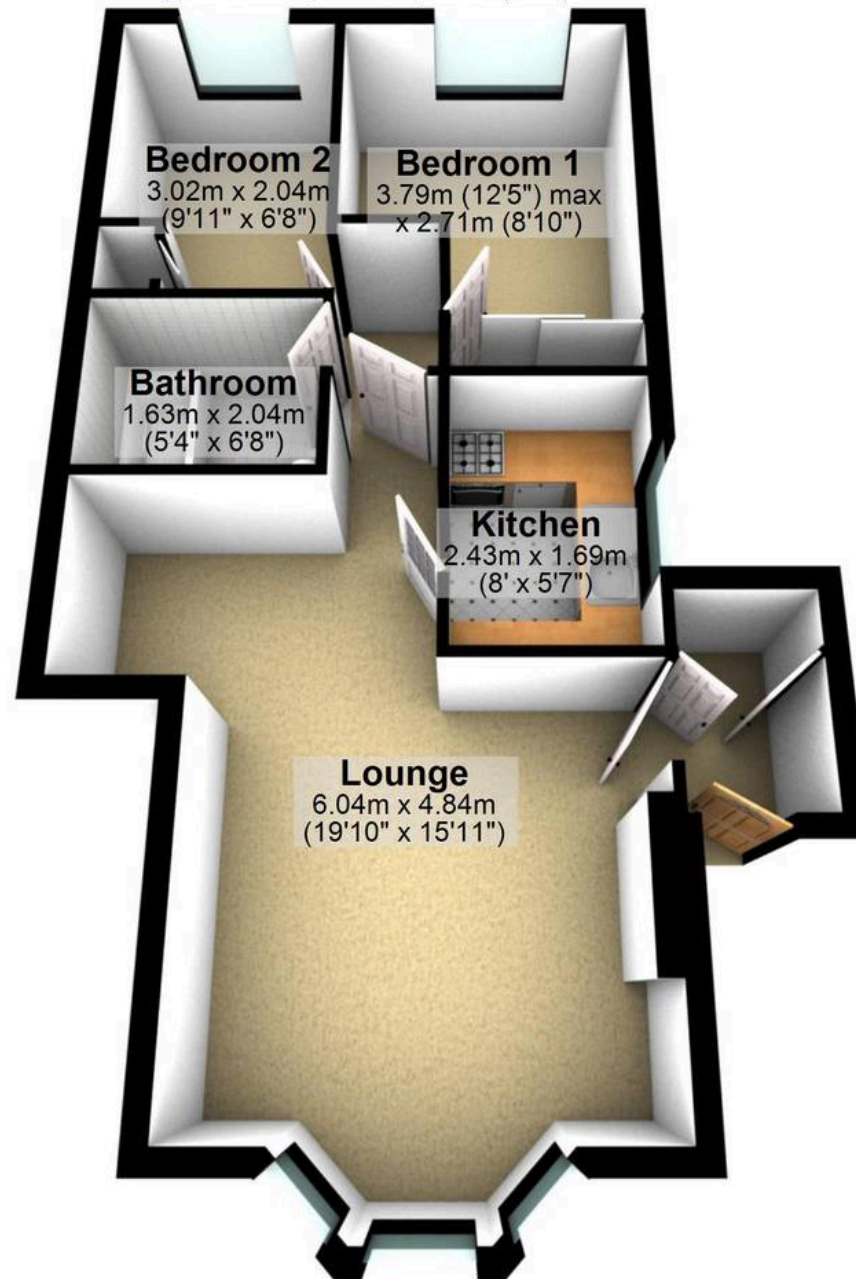
- GROUND FLOOR TWO BEDROOMED APARTMENT
- NO ONWARD CHAIN
- PERFECT FOR FIRST TIME BUYERS
- PRIVATE GARDENS
- DESIGNATED OFF ROAD PARKING
- FANTASTIC TRANSPORT LINKS
- WEALTH OF LOCAL AMENITIES
- GOOD FINISH THROUGHOUT
- GREAT BUY TO LET OPPORTUNITY
- LEASEHOLD APARTMENT AND COUNCIL TAX BAND A





Ground Floor

Approx. 46.9 sq. metres (505.2 sq. feet)



Total area: approx. 46.9 sq. metres (505.2 sq. feet)

All measurements are approximate
Plan produced using PlanUp.