



**WHITEHORNES**

Buy. Sell. Let. Relax!

0114 268 8533  
info@whitehornes.com  
www.whitehornes.com

**69 Woodholm Road, Ecclesall**

Sheffield

Guide Price £600,000 – £625,000



# 69 Woodholm Road

Ecclesall, Sheffield

An absolutely stunning example of Georgian architecture, this beautiful four, double bedroom, two-bathroomed bay windowed semi-detached house exemplifies modern luxury intertwined with historical charm. Boasting a meticulously crafted finish, the property showcases an unparalleled fusion of original period features with contemporary design elements, meticulously maintained by the current vendors and sympathetically finished with great care and attention to detail. Spanning three impressive floors and a total of 2,014 square feet, this remarkable residence captures the essence of refined living. Nestled on a sought-after residential road in the coveted Ecclesall area, this property offers an enviable lifestyle for families. With excellent schooling options in the vicinity, including Dobcroft Juniors and Silverdale/Mercia Secondary, this home caters to discerning buyers.

Council Tax band: E Tenure: Leasehold

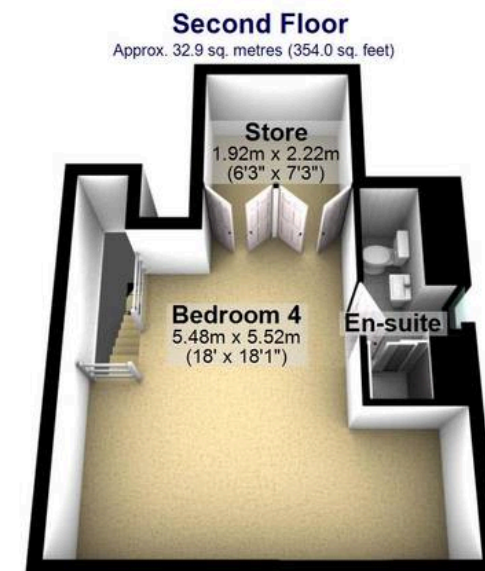
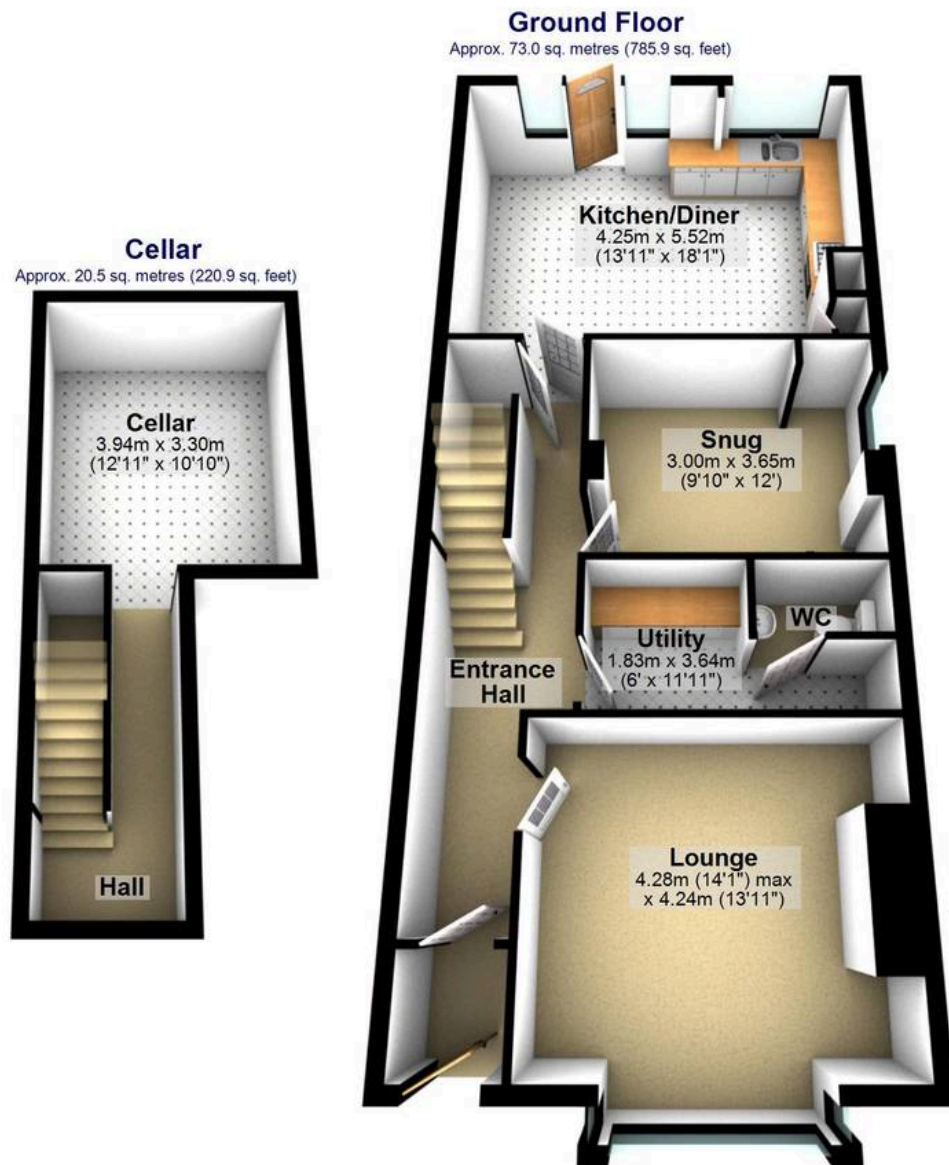
- STUNNING FOUR DOUBLE BEDROOM TWO BATHROOMED BAY WINDOWED GEORGIAN SEMI DETACHED
- EXPERTLY FINISHED THROUGHOUT WITH NO EXPENSE SPARED BY THE CURRENT VENDORS TO CREATE THIS BREATHTAKING FINISH
- RETAINING A WEALTH OF THE ORIGINAL PERIOD CHARACTER AND CHARM ASSOCIATED WITH A PROPERTY FROM THIS ERA AND SYSTEMATICALLY BLENDED THEM WITH A MODERN FINISH
- THREE INCREDIBLE FLOORS OF ACCOMMODATION TOTTALLING AN IMPRESSIVE 2,014 SQ FEET
- OFSTED RATED EXCELLENT SCHOOLING CATCHMENTS INCLUDING DOBCROFT JUNIORS AND SILVERDALE/MERCIA SECONDARY











Total area: approx. 187.1 sq. metres (2014.4 sq. feet)

All measurements are approximate  
Plan produced using PlanUp.