



**WHITEHORNES**

Buy. Sell. Let. Relax!

0114 268 8533  
info@whitehorns.com  
www.whitehorns.com

**58 Gaunt Road, Sheffield**

Sheffield

Guide Price **£135,000**



# 58 Gaunt Road

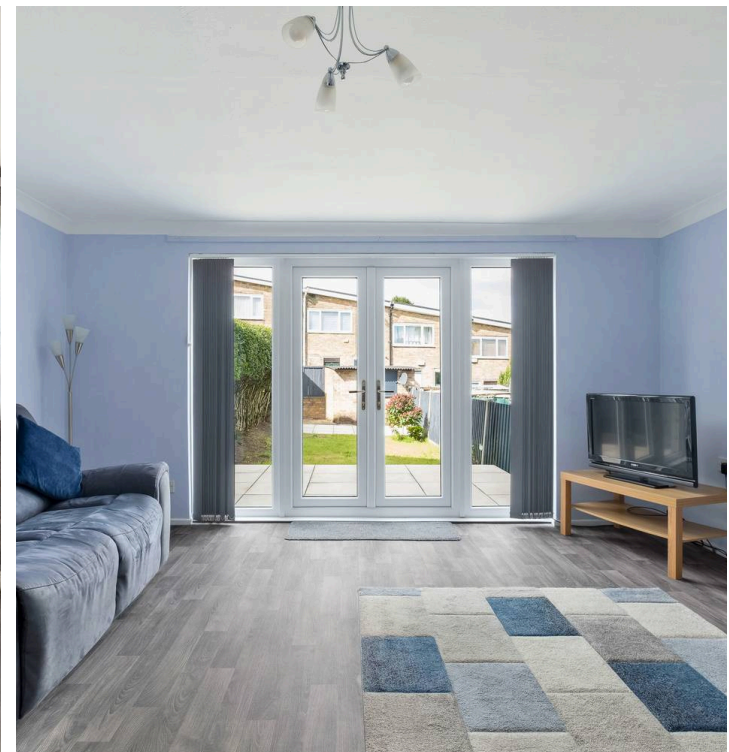
Sheffield, Sheffield

Available to the market with the benefit of no onward chain and vacant possession, this three bedroomed mid-terraced house is perfect for first time buyers or investors alike. Briefly consisting of a kitchen, lounge, three bedrooms and a family bathroom. To the rear is an enclosed, private garden with far reaching views. Situated in this popular residential area, this property is well placed for access to excellent amenities which include shops, schools, Graves Park, and transport links. Early viewing fully advised to appreciate the full potential on offer.

Council Tax band: A

Tenure: Leasehold

- THREE BEDROOMED MID-TERRACED HOUSE
- FANTASTIC BUY TO LET OPPORTUNITY
- REAR ENCLOSED GARDEN WITH SUPERB FAR REACHING VIEWS
- BENEFITTING FROM NO ONWARD CHAIN AND VACANT POSSESSION
- NUMEROUS LOCAL AMENITIES CLOSE BY
- LOCAL SCHOOLING CATCHMENT INCLUDING WOODLANDS PRIMARY SCHOOL
- ULTRA POPULAR GRAVES PARK NEARBY
- LEASEHOLD PROPERTY AND COUNCIL TAX BAND A
- VIEWING ADVISED TO SEE THE POTNETIAL ON OFFER
- EASY ACCESS TO PUBLIC TRANSPORT LINKS



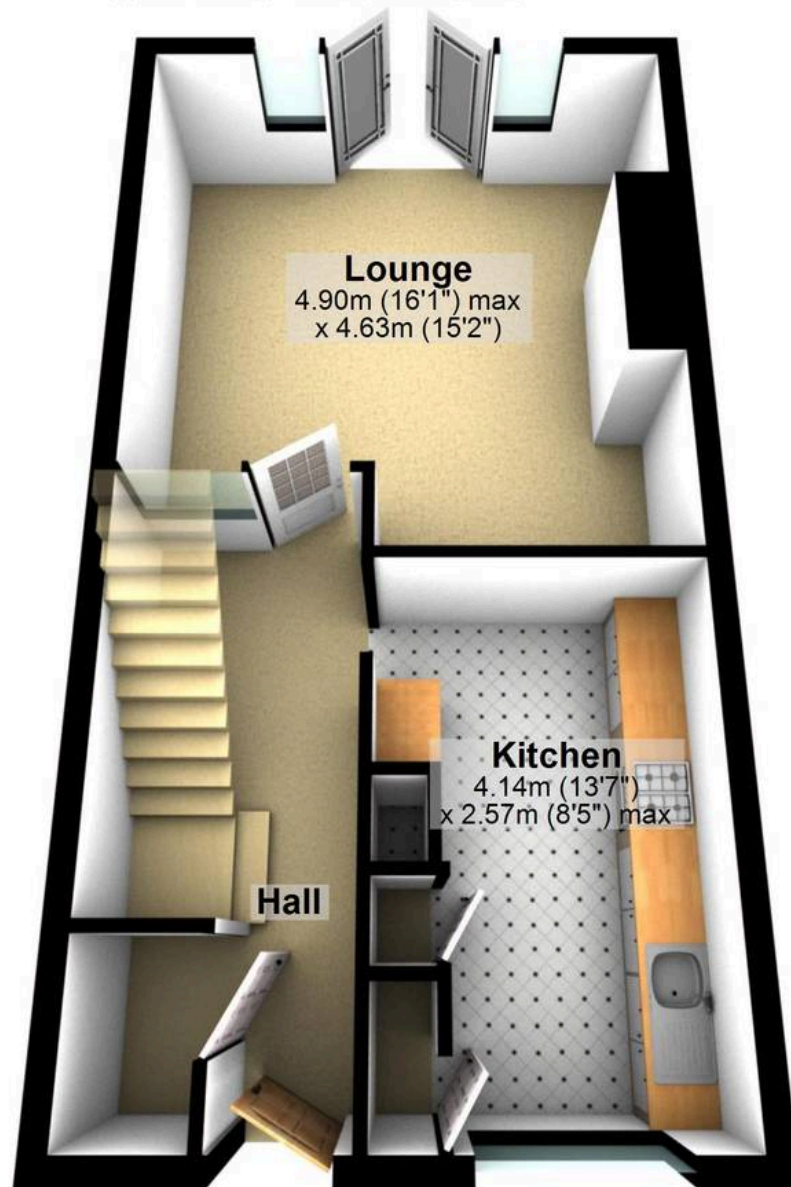






## Ground Floor

Approx. 42.0 sq. metres (452.6 sq. feet)



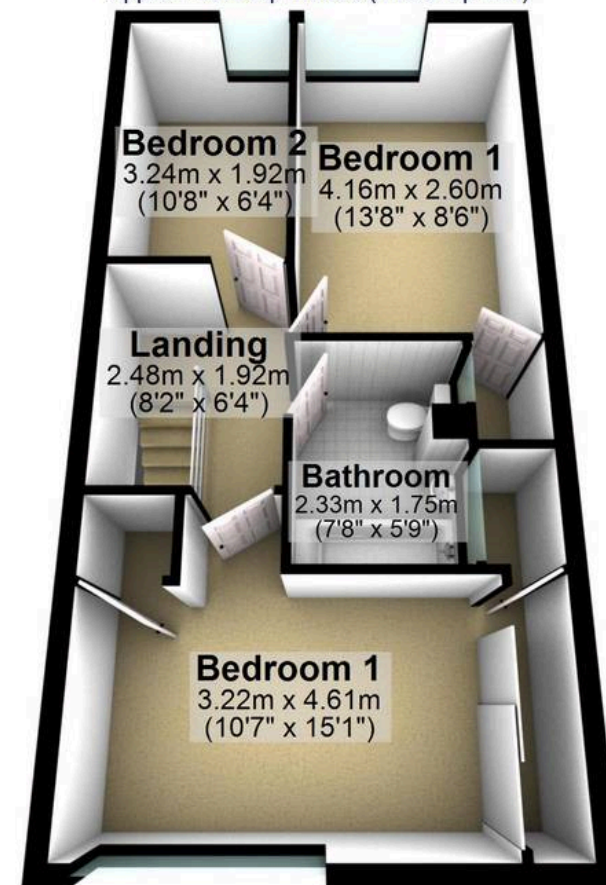
## Outbuilding

Approx. 4.0 sq. metres (43.4 sq. feet)



## First Floor

Approx. 42.3 sq. metres (455.3 sq. feet)



Total area: approx. 88.4 sq. metres (951.3 sq. feet)

All measurements are approximate  
Plan produced using PlanUp.



**WHITEHORSES**

Buy. Sell. Let. Relax!

0114 268 8533  
info@whitehorses.com  
www.whitehorses.com