



WHITEHORSES

Buy. Sell. Let. Relax!

0114 268 8533
info@whitehorses.com
www.whitehorses.com

26 Annesley Road, Sheffield

Sheffield

Guide Price **£240,000**

26 Annesley Road

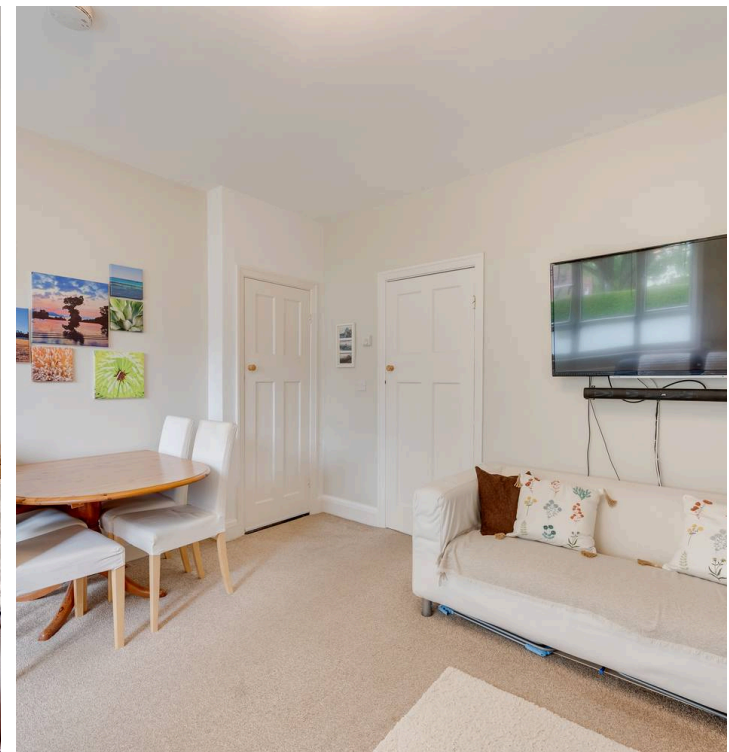
Sheffield, Sheffield

This three bedroomed semi-detached property is located in the heart of the ultra-popular residential suburb of Greenhill. Briefly consisting of a front lounge, well-appointed kitchen, three bedrooms and a family shower room. Totalling an impressive 1,024 sq ft of light and bright accommodation across two floors. To the outside is lovely front garden and a superb rear garden ideal for young families. Benefitting from easy, ample off road parking via the driveway. Boasting local schools including Greenhill Primary School and Meadowhead School. Close by is numerous local amenities and green spaces including Graves Park.

Council Tax band: A

Tenure: Freehold

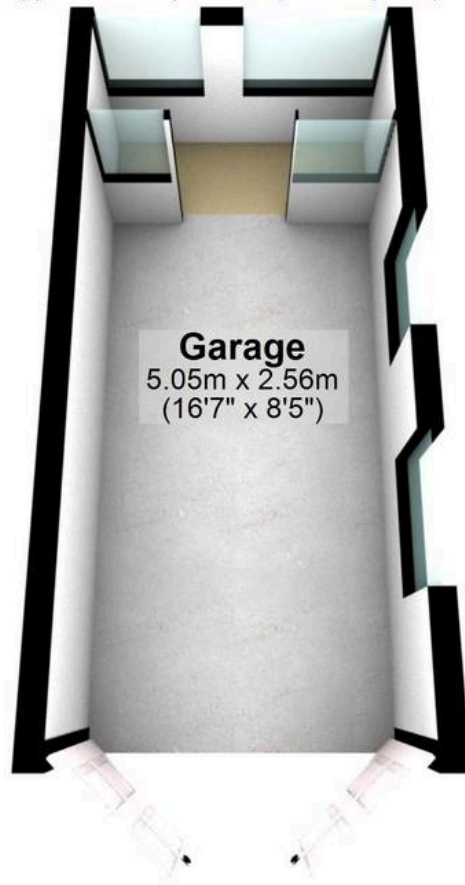
- THREE BEDROOMED SEMI -DETACHED FAMILY HOME
- PERFECT FOR FIRST TIME BUYERS OR YOUNG FAMILIES ALIKE
- HEART OF WELL SOUGHT AFTER GREENHILL
- EARLY VIEWING ADVISED
- SUPERB REAR ENCLOSED GARDEN
- EASY AND CONVENIENT OFF ROAD PARKING
- CLOSE BY TO NUMEROUS LOCAL AMENITIES
- POPULAR GRAVES PARK ON THE DOORSTEP
- REPUTABLE SCHOOLING CATCHMENTS NEARBY
- FREEHOLD PROPERTY AND COUNCIL TAX BAND A





Outbuilding

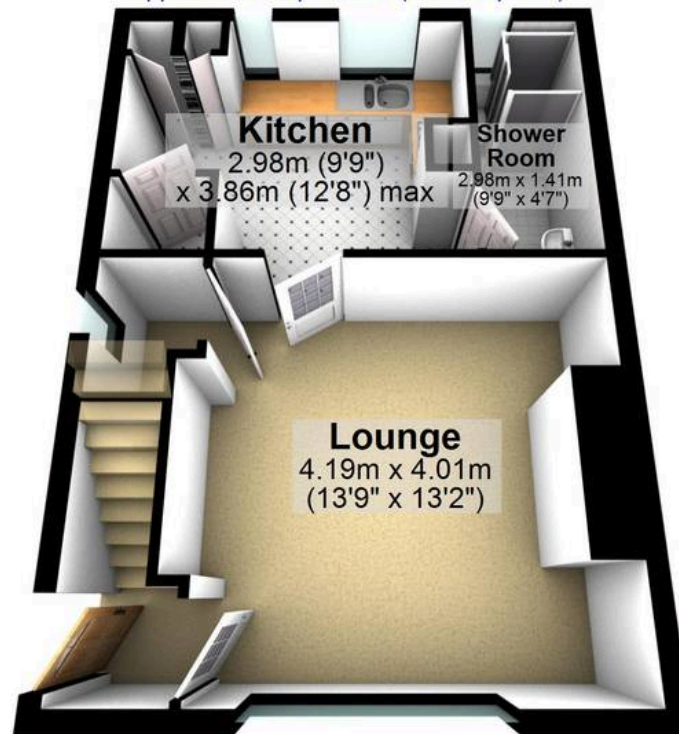
Approx. 14.7 sq. metres (158.3 sq. feet)



Garage
5.05m x 2.56m
(16'7" x 8'5")

Ground Floor

Approx. 37.6 sq. metres (404.7 sq. feet)



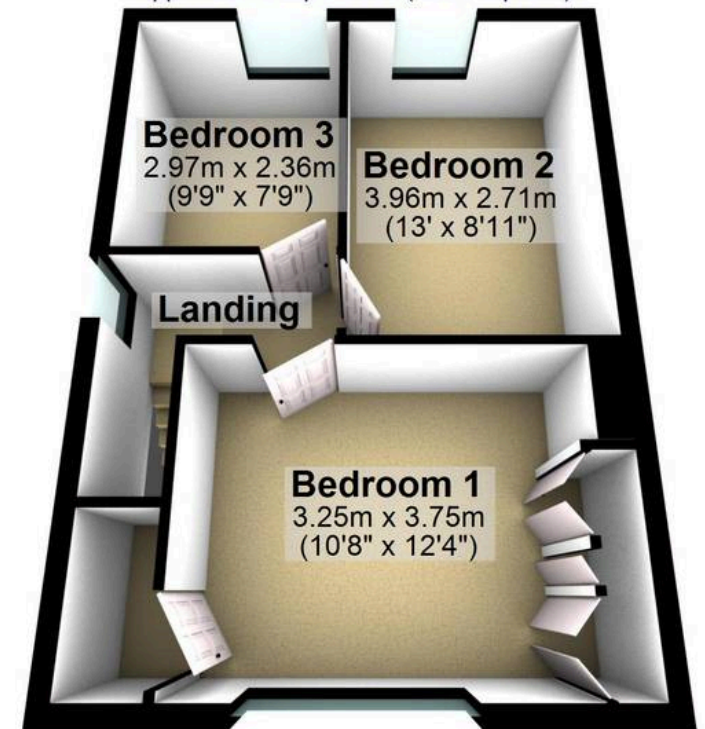
Kitchen
2.98m (9'9")
x 3.86m (12'8") max

Shower Room
2.98m x 1.41m
(9'9" x 4'7")

Lounge
4.19m x 4.01m
(13'9" x 13'2")

First Floor

Approx. 37.6 sq. metres (404.7 sq. feet)



Bedroom 3
2.97m x 2.36m
(9'9" x 7'9")

Bedroom 2
3.96m x 2.71m
(13' x 8'11")

Landing

Bedroom 1
3.25m x 3.75m
(10'8" x 12'4")

Total area: approx. 89.9 sq. metres (967.6 sq. feet)

All measurements are approximate
Plan produced using PlanUp.

26 Annelsey Road