



WHITEHORSES

Buy. Sell. Let. Relax!

0114 268 8533
info@whitehorses.com
www.whitehorses.com



25 Helmtan Drive, Woodseats, Sheffield

Sheffield

Offers Over **£250,000**

25 Helmtan Drive, Woodseats

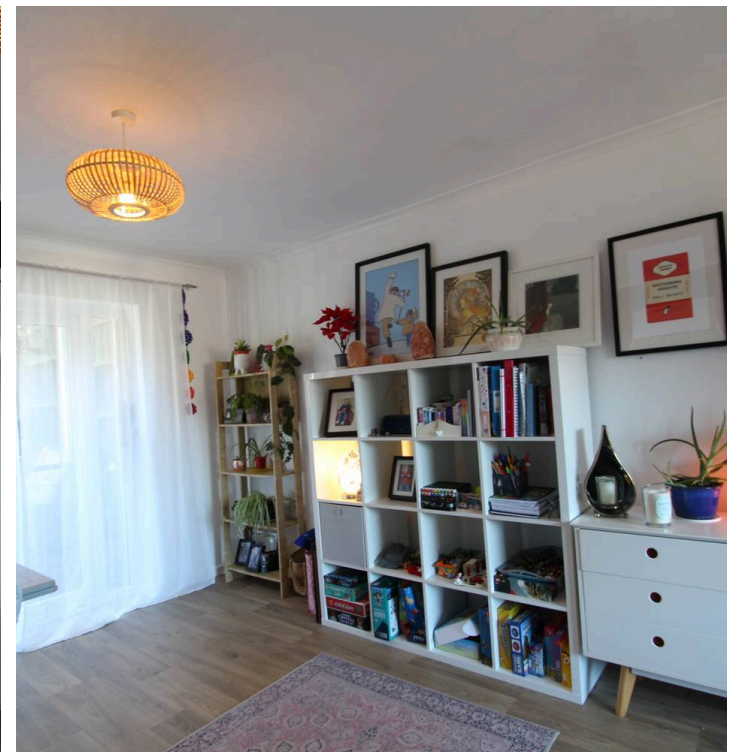
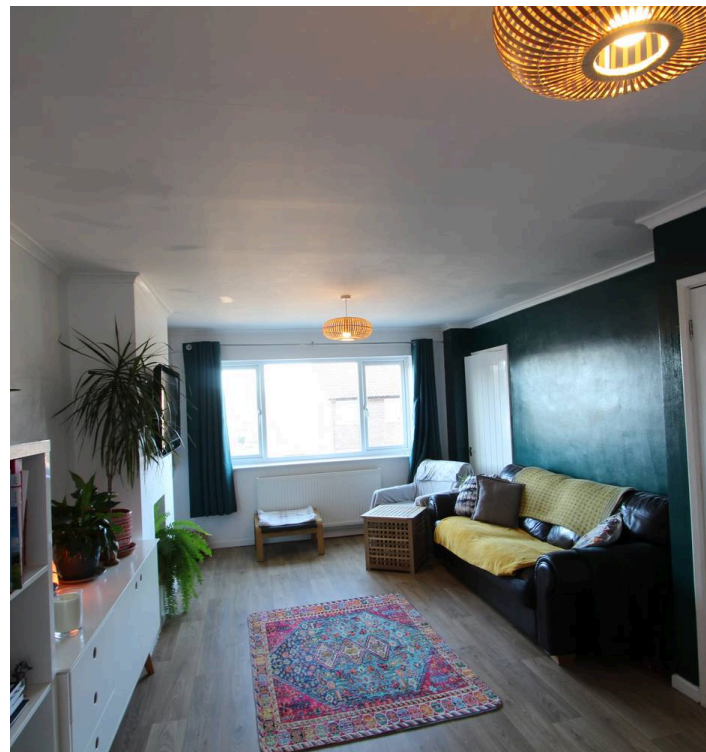
Sheffield

GUIDE PRICE £260,000-£270,000 An absolutely fabulous three bedroomed, end of terraced property. Enjoying some incredible views to the front over towards The Peak District number 25 stands in this elevated position ensuring a huge degree of privacy along with a private rear garden, parking and garage to the ground floor. Offering a townhouse style feel throughout the three floor that total an impressive 1,171 sq feet of super light and versatile accommodation. Perfect for the first time buyers, young professional couple or family market alike its easy to say that viewing is absolutely essential to do full justice to this wonderful home. Offered to the open market with the benefit of no onward chain involved the property is located on this quiet tucked away road in the very heart of ultra popular Woodseats.

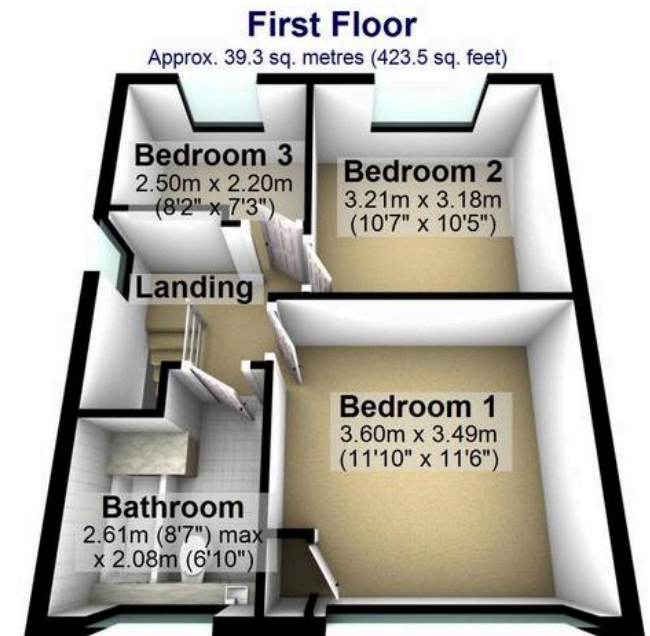
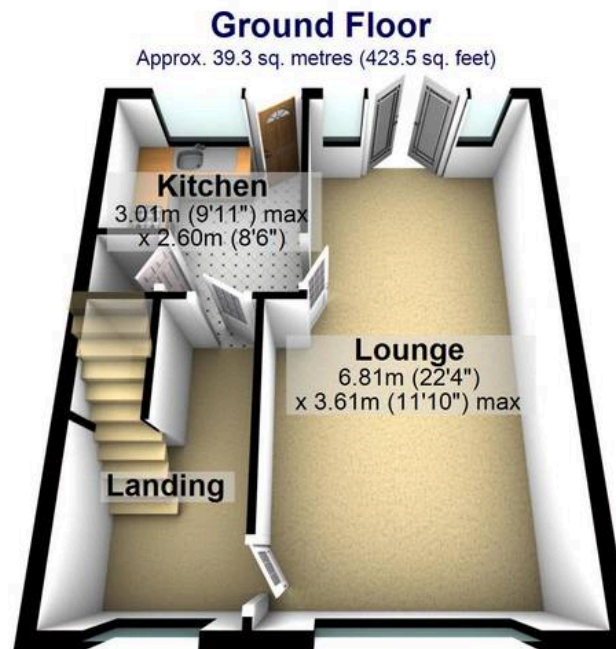
Council Tax band: B

Tenure: Leasehold

- THREE BEDROOMED END OF TERRACED
- TOWN HOUSE STYLE PROPERTY IN AN ELEVATED POSITION
- INCREDIBLE FAR REACHING VIEWS TO THE FRONT OVER THE MOORS
- OFF ROAD PARKING AND DRIVEWAY TO THE FRONT
- LIGHT AND SPACIOUS ACCOMMODATION TOTALLING 1,171 SQ FEET
- HEART OF ULTRA POPULAR WOODSEATS SUBURB
- VIEWING ESSENTIAL TO DO FULL JUSTICE
- CLOSE TO NUMEROUS LOCAL AMENITIES WITHIN THE SHOPPING PARADE
- EXCELLENT SCHOOLING CATCHMENTS
- LEAEOHOLD PROPERTY AND COUNCIL TAX BAND B







Total area: approx. 108.8 sq. metres (1171.2 sq. feet)

All measurements are approximate
Plan produced using PlanUp.