



WHITEHORNS

Buy. Sell. Let. Relax!

0114 268 8533
info@whitehorns.com
www.whitehorns.com



18 Aintree Avenue, Eckington

Sheffield

Guide Price **£425,000**

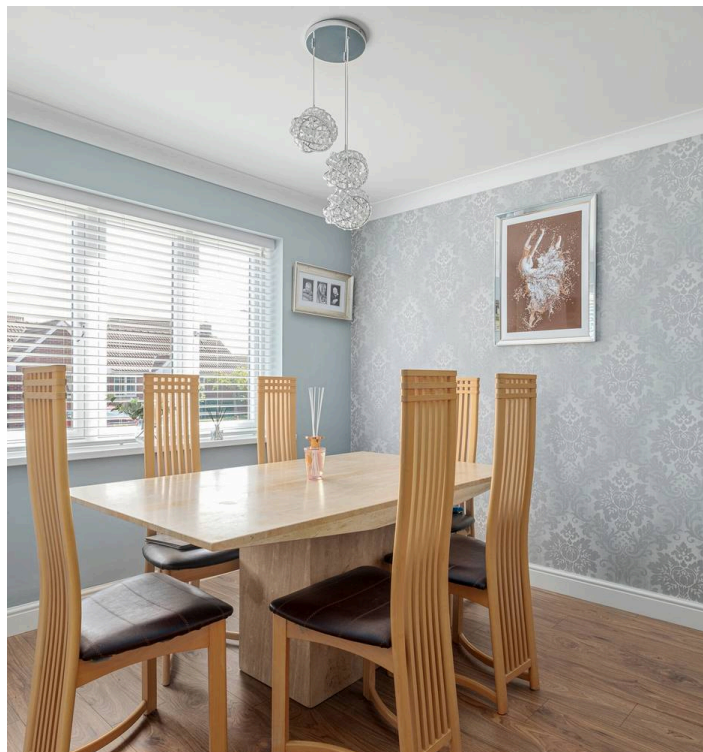
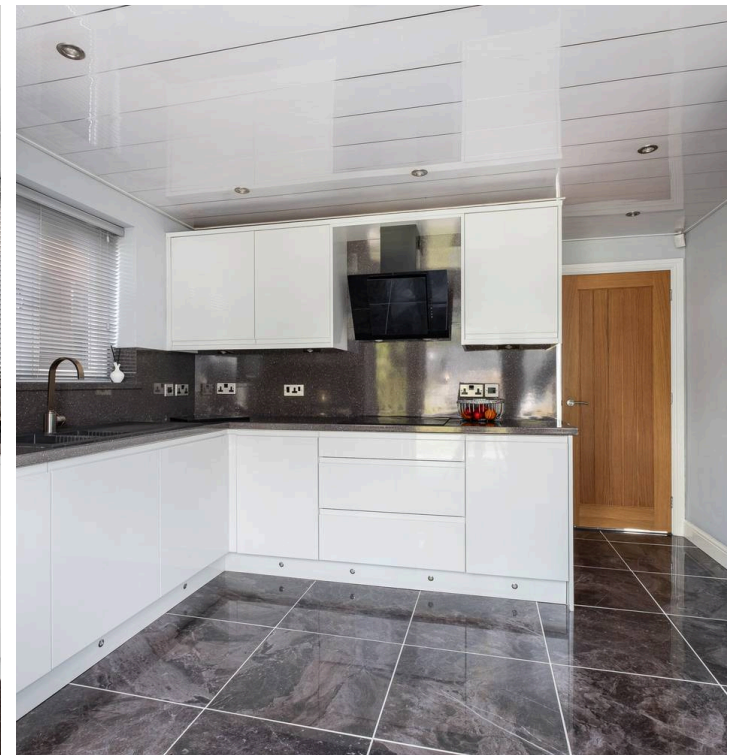
18 Aintree Avenue

Eckington, Sheffield

Presenting this beautiful, four bedroomed detached family home in the well sought after suburb of Eckington. Totalling an impressive 1,239 sq ft of spacious accommodation, creating the ideal home for the professional couple or young families alike. In brief, this property consists of a front dining room, lounge, kitchen, downstairs w/c, utility room, to the upstairs is three double bedrooms, one single bedroom also allowing potential for a dressing room, office or nurse and a modern family bathroom. The large, sunny, rear garden provides the perfect space for entertaining. Benefitting from easy, off road parking via the driveway and garage. Surrounded by a host of local amenities, green spaces and schools such as Eckington School and Birk Hill Infant School. Viewing is essential to appreciate this deceptively stunning home. Council Tax band: E

Tenure: Freehold

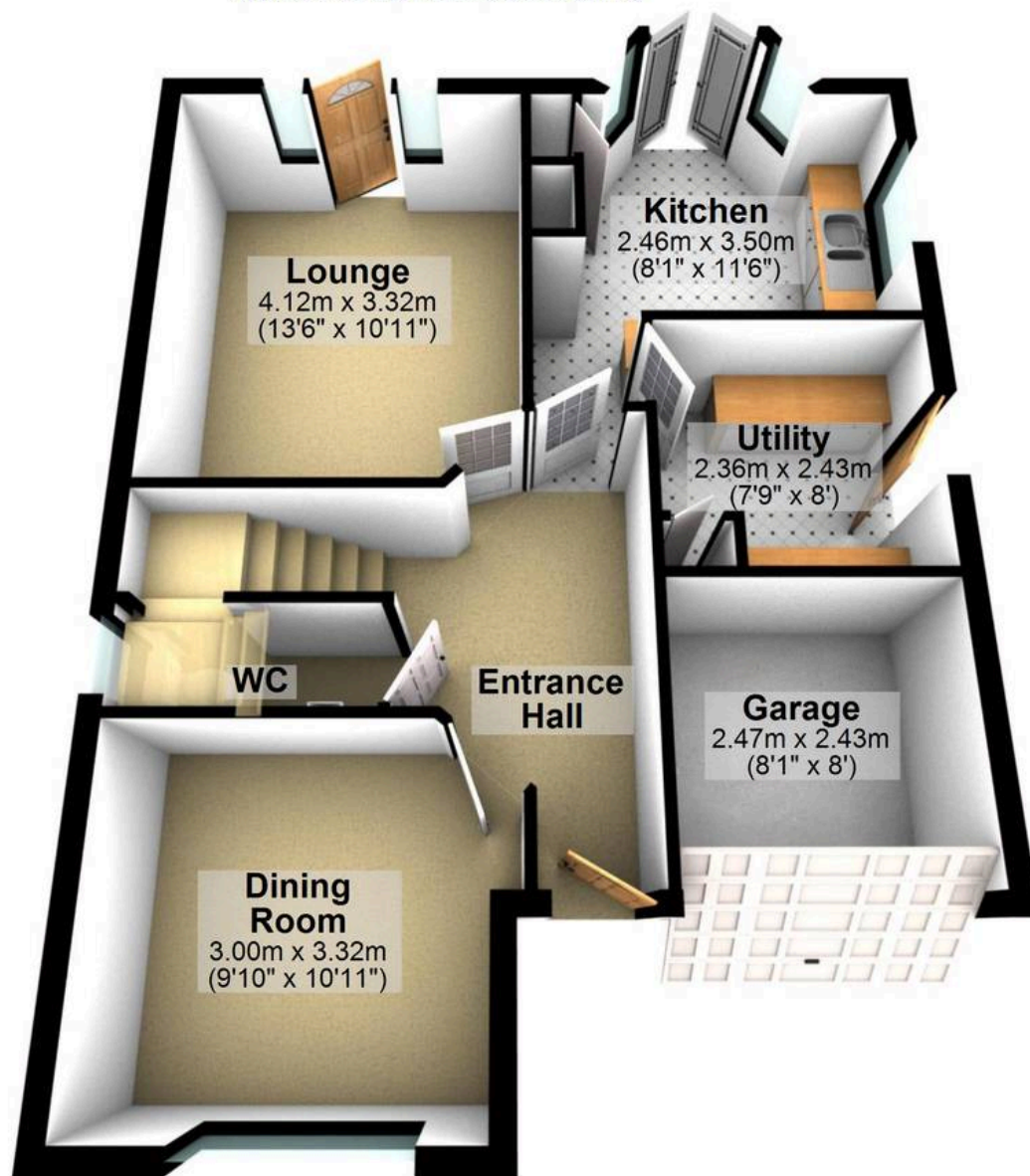
- SUPERB FOUR BEDROOMED DETACHED HOUSE
- LOCATED IN THE WELL SOUGHT AFTER SUBURB OF ECKINGTON
- PERFECT HOME FOR THE GROWING FAMILY MARKET
- STUNNING, PRIVATE REAR GARDEN WITH DECKING AREAS
- FINISHED TO A BEAUTIFUL STANDARD THROUGHOUT WITH VIEWING ESSENTIAL
- HOST OF LOCAL AMENITIES AND GREEN SPACES NEARBY
- LOCAL SCHOOLS A SHORT STROLL AWAY INCLUDING ECKINGTON SCHOOL
- 1,239 SQ FT OF LIGHT, BRIGHT AND SPACIOUS ACCOMMODATION
- LARGE DRIVEWAY AND GARAGE PROVIDING AMPLE





Ground Floor

Approx. 58.1 sq. metres (625.6 sq. feet)



First Floor

Approx. 57.1 sq. metres (614.2 sq. feet)



Total area: approx. 115.2 sq. metres (1239.8 sq. feet)

All measurements are approximate
Plan produced using PlanUp.