



21 Helmtan Drive, Woodseats

Sheffield

Guide Price £265,000

21 Helmtan Drive

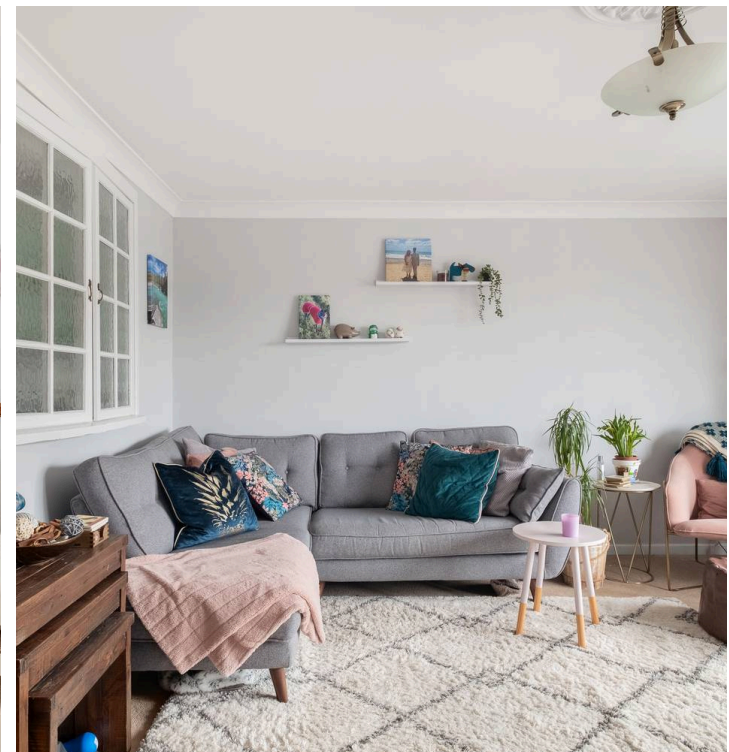
Woodseats, Sheffield

An increasingly rare opportunity has arisen to take possession of this deceptively spacious and very well presented two bedroomed semi-detached property. Ideally situated in the heart of this ever popular residential suburb within easy walking distance of Graves Park and all of Woodseats many local amenities this property also benefits from superb public transport links and sits in the catchment for local reputable schools. Boasting a versatile range of accommodation to suit a range of buyers this property briefly consists of entrance porch, reception hallway, spacious dining/kitchen, bright, larger than average lounge with large picture window enjoying excellent views, two large double bedrooms, family bathroom and private gardens to the rear.

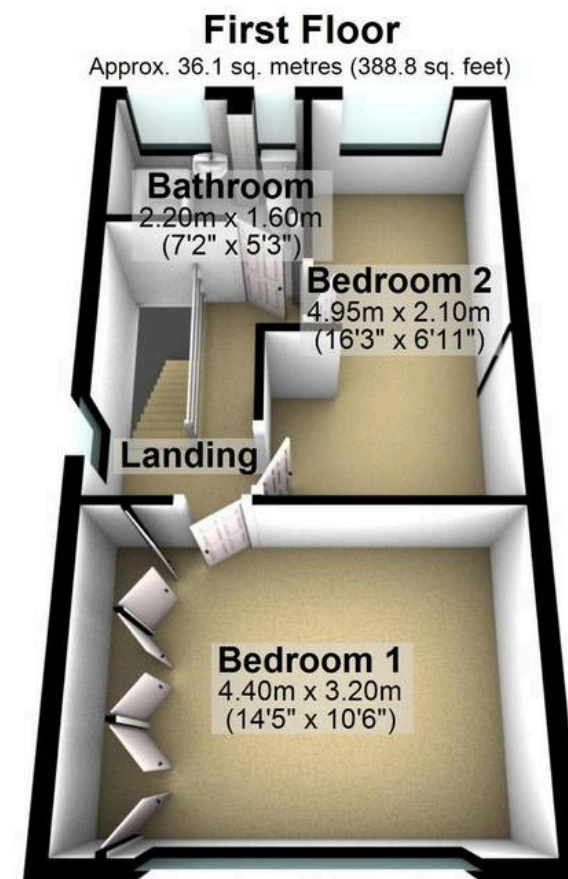
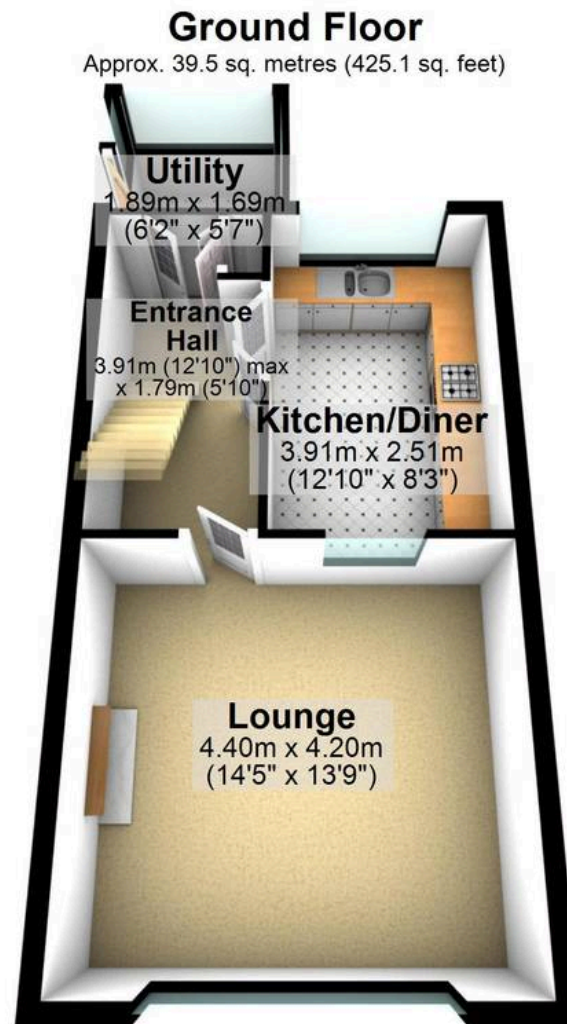
Council Tax band: B

Tenure: Freehold

- TWO BEDROOMED SEMI DETACHED HOUSE IN THE HEART OF WOODSEATS
- CLOSEBY TO GREEN SPACES INCLUDING GRAVES PARK
- POTENTIAL FOR EXPANSION *STPP*
- HOST OF LOCAL AMENITIES
- GREAT PUBLIC TRANSPORT LINKS
- OFF ROAD PARKING AND UNDERHOUSE GARAGE
- SUPERB PRIVATE REAR GARDEN AND FANTASTIC VIEWS SURROUNDING
- 1,026 SQ FT OF LIGHT AND BRIGHT ACCOMMODATION
- VIEWING ESSENTIAL TO DO FULL JUSTICE
- FREEHOLD PROPERTY AND COUNCIL TAX BAND B







Total area: approx. 95.4 sq. metres (1026.8 sq. feet)