



**WHITEHORNES**

Buy. Sell. Let. Relax!

0114 268 8533  
info@whitehorses.com  
www.whitehorses.com



**423 Whirlowdale Road, Whirlow**

Sheffield

Guide Price **£900,000**



# 423 Whirlowdale Road

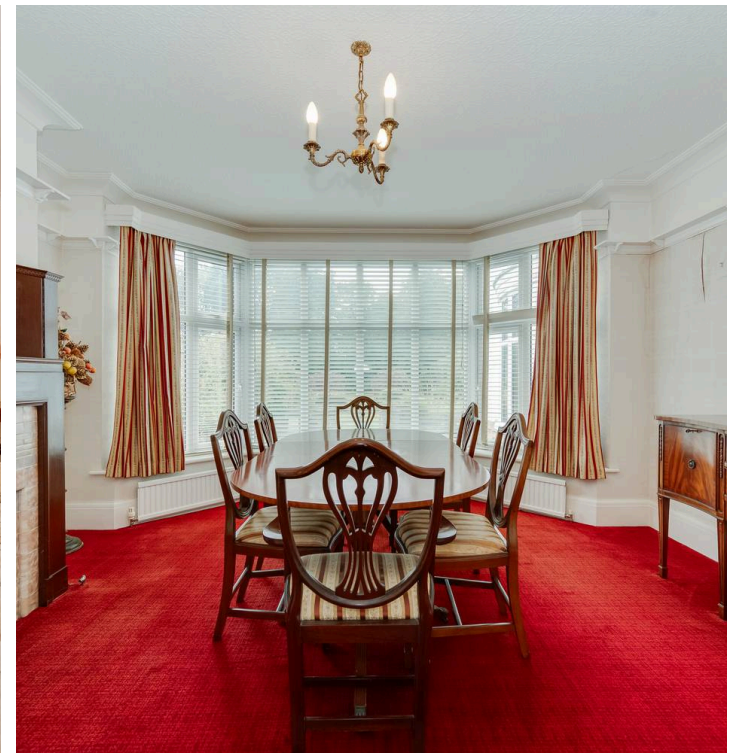
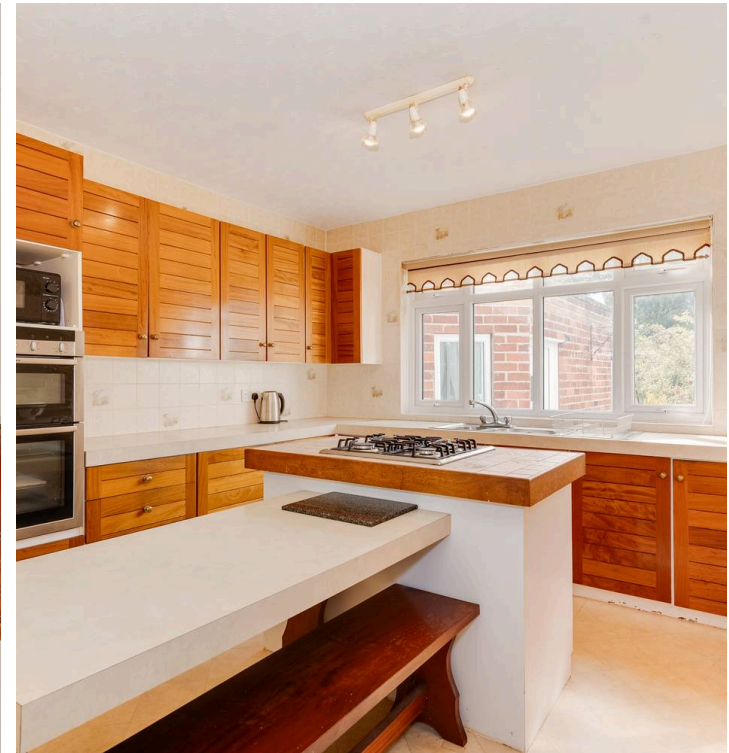
Whirlow, Sheffield

A rare opportunity awaits with this imposing four-bedroomed detached family home, boasting expansive south-facing private gardens spanning over 0.5 acres. Situated in the sought-after catchment area for outstanding local schools, this property features three large and bright reception rooms, offering ample potential for expansion to the rear and attic to customise your ideal forever home. Just a short distance from the picturesque Peak District, this property is available with no onward chain, making early viewing essential. With two floors of accommodation totaling an impressive 2258 square feet, this residence also includes an enormous integral garage. Briefly consists of large entrance hallway, lounge, dining room, sunroom, breakfasting kitchen, integral garage, downstairs WC, four double bedrooms and family bathroom. Outside is ample off road parking for numerous vehicles, beautiful front gardens and to the rear are expansive and private gardens.

Council Tax band: G

Tenure: Leasehold

- RARE OPPORTUNITY TO TAKE POSSESSION OF THIS IMPOSING FOUR BEDROOMED DETACHED FAMILY HOME
- THREE LARGE AND BRIGHT RECEPTION ROOMS
- EXPANSIVE SOUTH FACING PRIVATE GARDENS TOTALLING OVER 0.5 ACRES
- SITS IN THE CATCHMENT FOR OUTSTANDING LOCAL SCHOOLS
- ENOURMOUS INTEGRAL GARAGE
- AMPLE POTENTIAL FOR EXPANSION TO THE REAR AND ATTIC TO CREATE YOUR PERFECT FOREVER HOME
- SHORT DISTANCE FROM THE PEAK DISTRICT









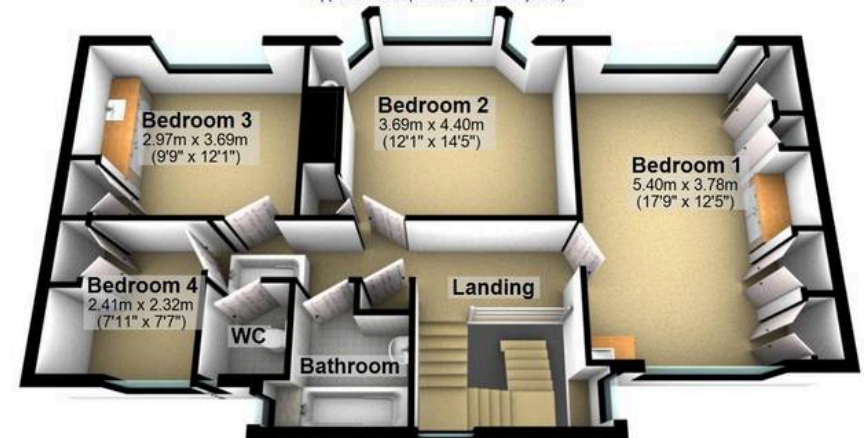
### Ground Floor

Approx. 135.6 sq. metres (1459.2 sq. feet)



### First Floor

Approx. 70.5 sq. metres (759.3 sq. feet)



Total area: approx. 206.1 sq. metres (2218.5 sq. feet)

All measurements are approximate  
Plan produced using PlanUp.

423 Whirlowdale Road