

212 Bannerdale Road, Bannerdale

Sheffield

Guide Price £500,000-£525,000



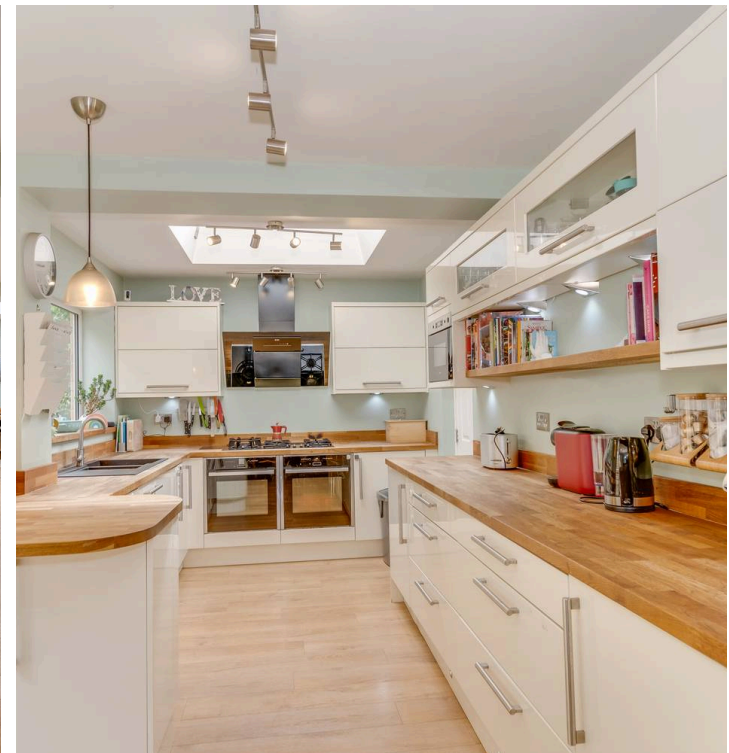
# 212 Bannerdale Road

Bannerdale, Sheffield

An absolutely fabulous four double bedroom, two bath/shower roomed semi detached home. Having been tastefully extended to the rear side and loft to create this incredible spacious and light feeling across three floors that total an impressive 1,536 sq feet of accommodation. With a beautiful rear open plan kitchen, living and dining room along with a stunning master bedroom occupying the entire second that enjoys its own en-suite and Juliet balcony. Offering up some fabulous views to the front and rear due its position on the road with no properties directly in front, the rear garden is also pitch perfect for children that love the outdoors offering privacy and and plenty of sun throughout the day due to its size. Located on this well sought after residential road within the very heart of ultra popular Bannerdale this fantastic property is pitch perfect for the growing family market.

Council Tax band: C Tenure: Freehold

- SENSATIONAL FOUR DOUBLE BEDROOM TWO BATHROOM SEMI DETACHED FAMILY HOME
- TASTEFULLY EXTENDED TO THE SIDE REAR AND LOFT TO CREATE THIS SUPER SPACIOUS AND LIGHT FEEL THROUGHOUT
- THREE FLOORS OF ACCOMMODATION TOTALLING AN IMPRESSIVE 1,536 SQ FEET
- IMPRESSIVE REAR GARDEN IDEALLY SET UP FOR OUTDOOR ADVENTURES AND INCREDIBLY PRIVATE
- PITCH PERFECT FOR THE GROWING FAMILY MARKET WITH VIEWING ESSENTIAL TO DO FULL JUSTICE
- EXCELLENT SCHOOLING CATCHMENTS INCLUDING GREYSTONES JUNIORS AND BOTH HIGH STOORS/MERCIA SECONDARY
- OFF ROAD PARKING AND GARAGE TO THE FRONT



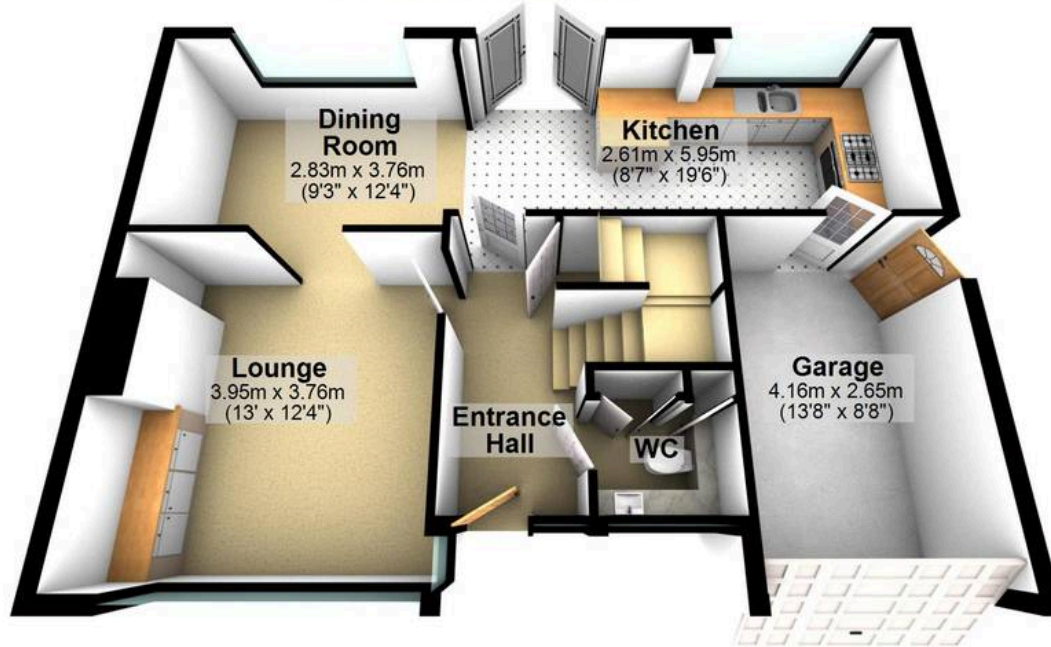






## Ground Floor

Approx. 64.9 sq. metres (699.0 sq. feet)



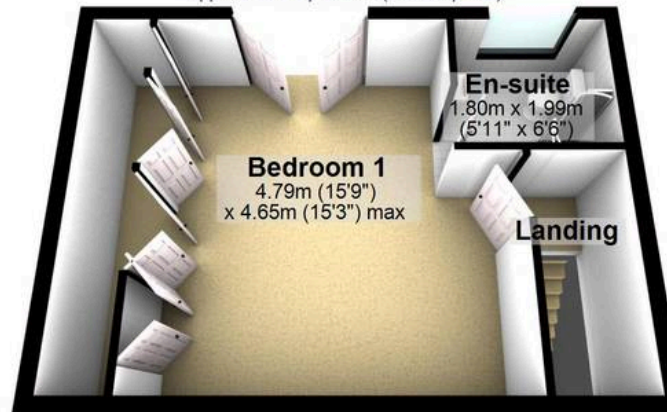
## First Floor

Approx. 45.4 sq. metres (488.9 sq. feet)



## Second Floor

Approx. 32.4 sq. metres (348.6 sq. feet)



Total area: approx. 142.7 sq. metres (1536.4 sq. feet)

All measurements are approximate  
Plan produced using PlanUp.