



WHITEHORNES

Buy. Sell. Let. Relax!

0114 268 8533
info@whitehornes.com
www.whitehornes.com



23 Norton Lees Lane, Sheffield

Sheffield

Guide Price **£340,000**

23 Norton Lees Lane

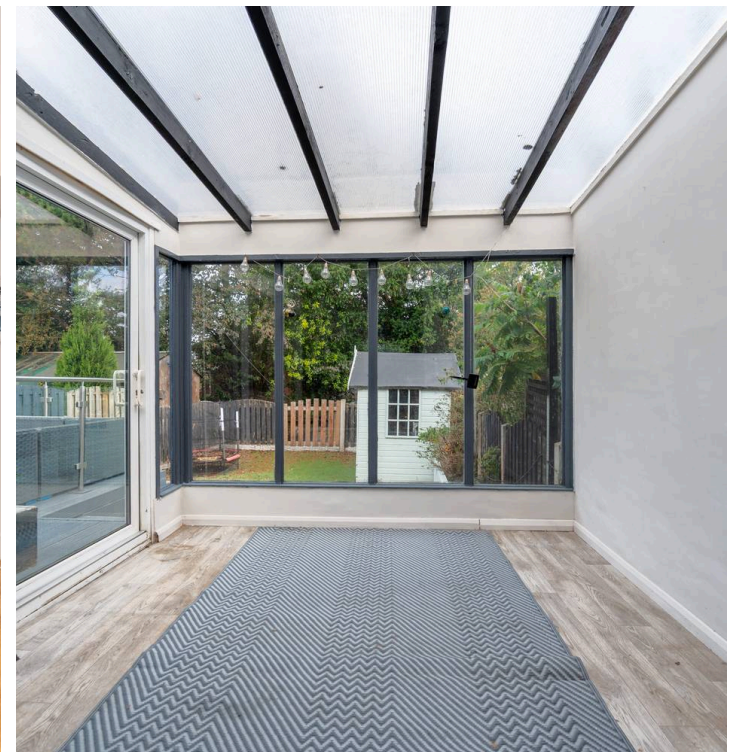
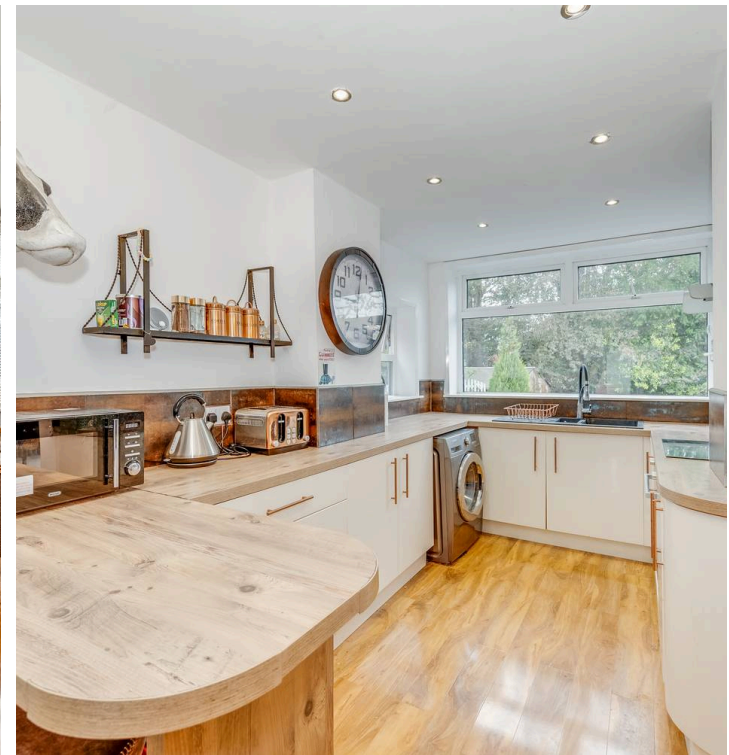
Sheffield, Sheffield

Nestled in the heart of the well sought after residential suburb of Norton Lees, this superb four bedroomed semi-detached home is perfect for young families and professional couples alike. This deceptively spacious property totals 1,304 sq ft of light and bright accommodation. On the ground floor is an entrance hall, lounge, open plan kitchen/dining room, conservatory and the fourth bedroom with its own W/C. To the upstairs, is three double bedrooms and a family bathroom. The conservatory opens out onto a fantastic decking area and leads down to the patio and garden space making it the perfect addition to this family home. Benefitting from easy, ample off road parking for multiple vehicles on the front driveway. Number 23 is surrounded by numerous local amenities including shops among Chesterfield Road and ultra-popular Meersbrook Park a short stroll away. Local reputable schools include Mundella Primary School, Carrfield Primary School and Newfield Secondary School. Viewings essential to do full justice.

Council Tax band: C

Tenure: Freehold

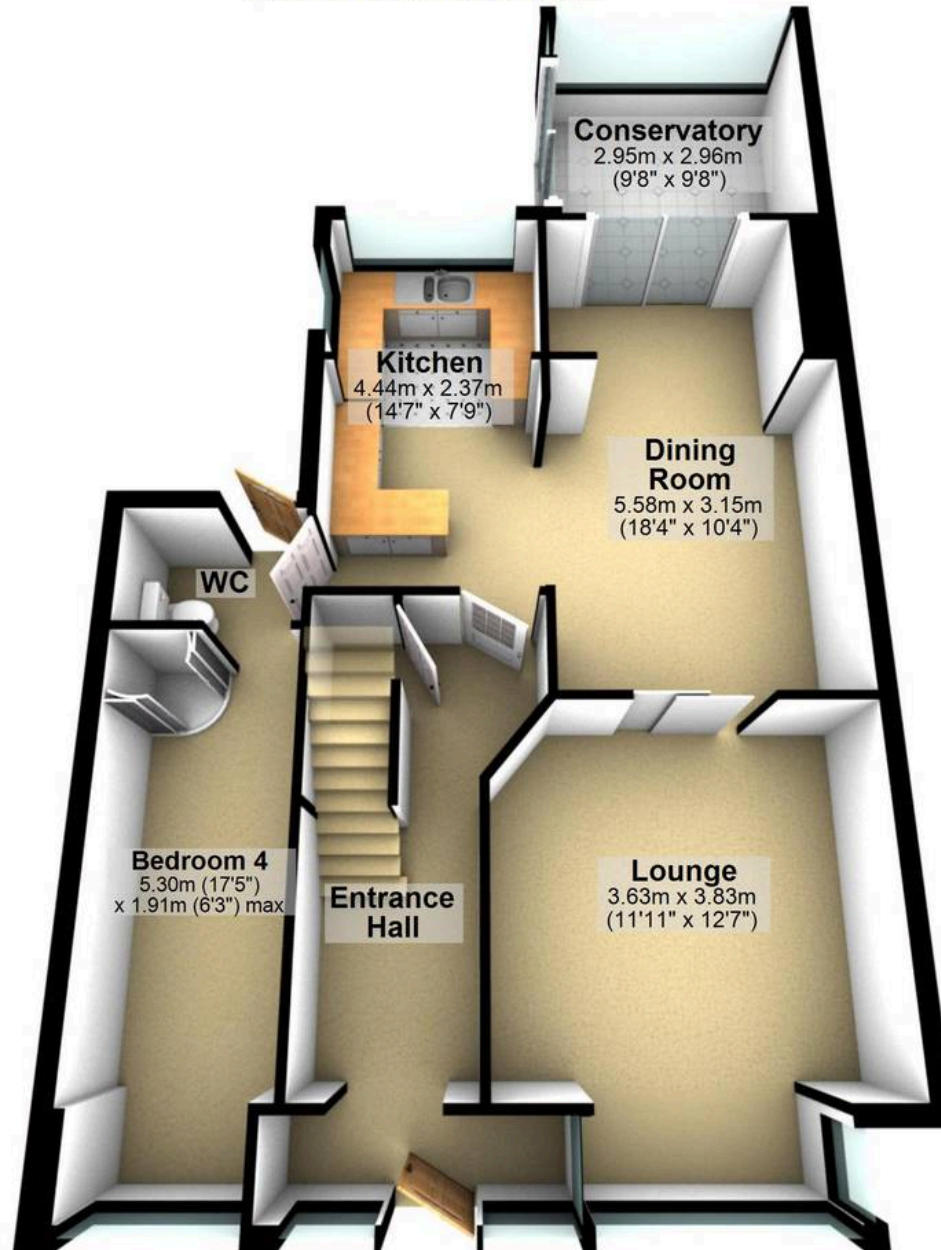
- SUPERB FOUR BEDROOMED SEMI-DETACHED FAMILY HOME
- SUPERB REAR ENCLOSED FAMILY GARDEN WITH DECKING
- EASY AMPLE OFF ROAD PARKING TO THE FRONT VIA THE DRIVEWAY
- TOTALLING AN IMPRESSIVE 1,304 SQ FT OF ACCOMMODATION
- IDEAL HOME FOR YOUNG FAMILIES OR PROFESSIONAL COUPLES ALIKE
- NESTLED IN THE HEART OF THE VERY POPULAR





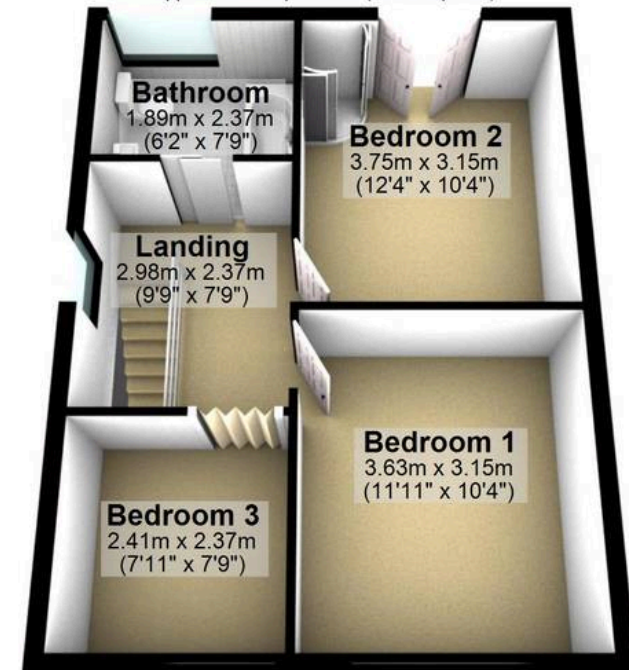
Ground Floor

Approx. 79.2 sq. metres (852.4 sq. feet)



First Floor

Approx. 42.0 sq. metres (452.6 sq. feet)



Total area: approx. 121.2 sq. metres (1304.9 sq. feet)

All measurements are approximate
Plan produced using PlanUp.