



WHITEHORNES

Buy. Sell. Let. Relax!

0114 268 8533
info@whitehorses.com
www.whitehorses.com

51 Hollythorpe Road, Norton Lees

Sheffield

Guide Price **£280,000**

51 Hollythorpe Road

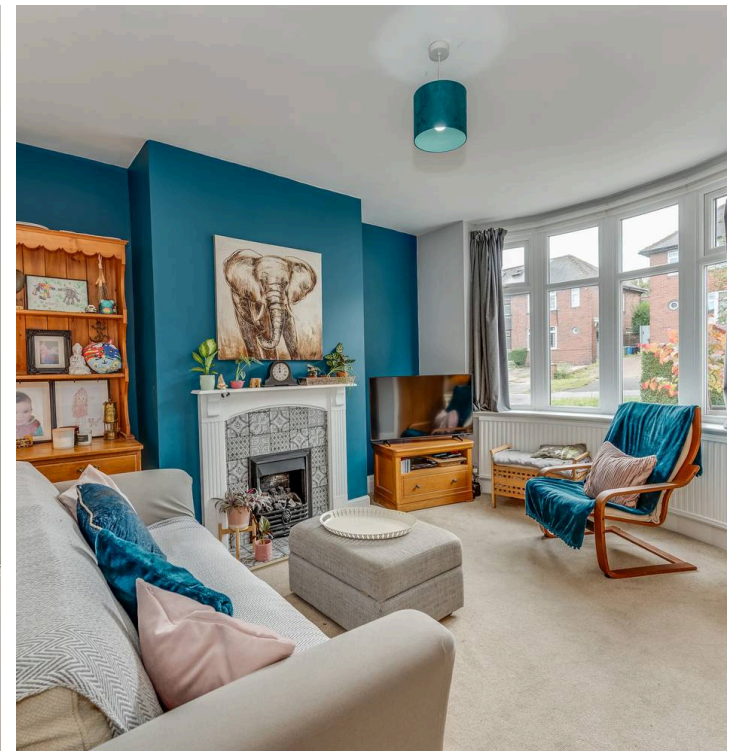
Norton Lees, Sheffield

An internal inspection is essential to truly appreciate the standard of accommodation on offer in this stylish and immaculately presented three bedroomed semi-detached family home. Ideally location in the heart of Norton Lees with easy access to not only the ever popular Graves and Meersbrook parks but also great public transport links and reputable local schools. Tastefully finished throughout this property is ideal for growing families and briefly consists of large and bright bay windowed lounge, well appointed kitchen/dining room, two double bedrooms, single bedroom and family bathroom. Outside is off road parking and to the rear is a stunning family friendly garden.

Council Tax band: B

Tenure: Leasehold

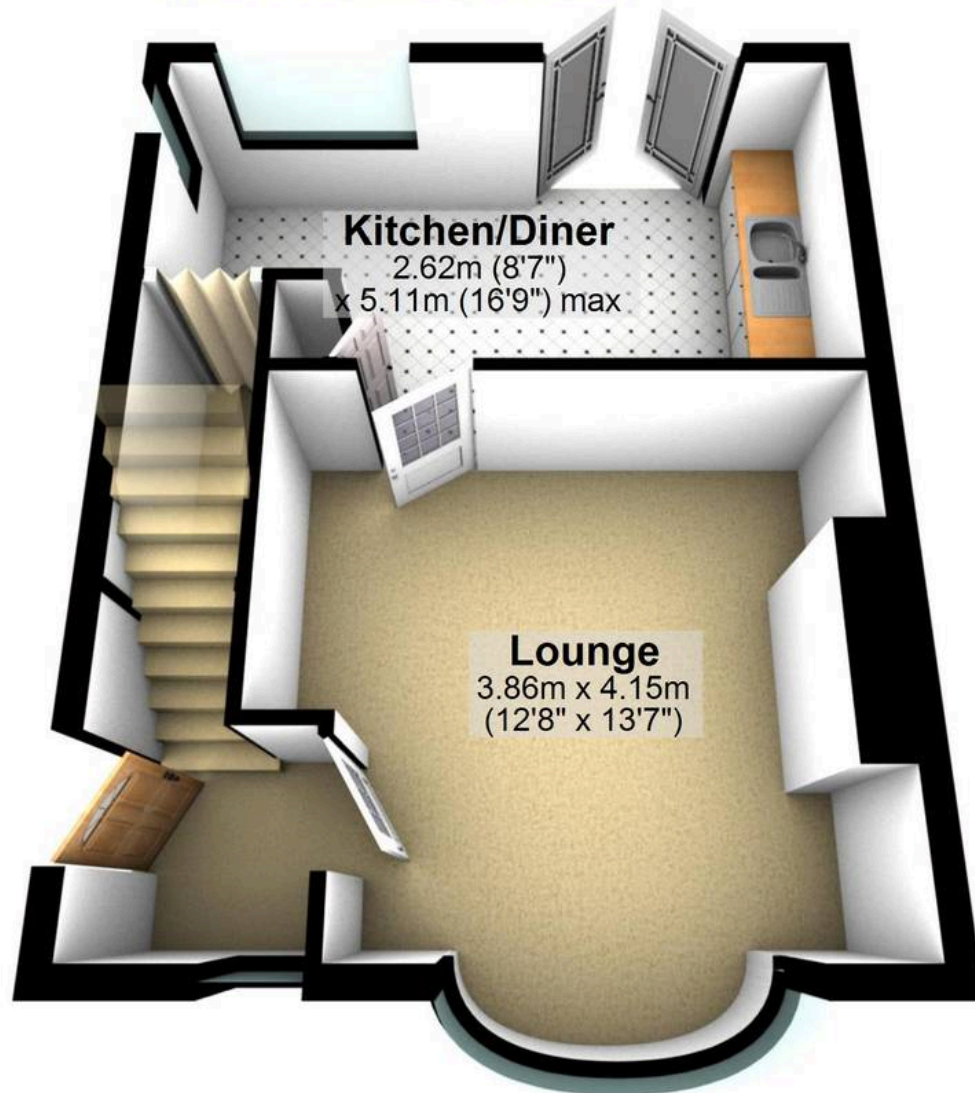
- THREE BEDROOMED SEMI-DETACHED FAMILY HOME
- EARLY VIEWING IS ADVISED
- STUNNING REAR GARDENS
- OFF ROAD PARKING TO THE FRONT
- NO EXPENSE SPARED
- CLOSE TO MEERSBROOK AND GRAVES PARKS
- LOCAL REPUTABLE SCHOOLS
- PERFECT FOR GROWING FAMILIES
- GREAT VIEWS ACROSS TO THE CITY
- MODERN AND STYLISH THROUGHOUT





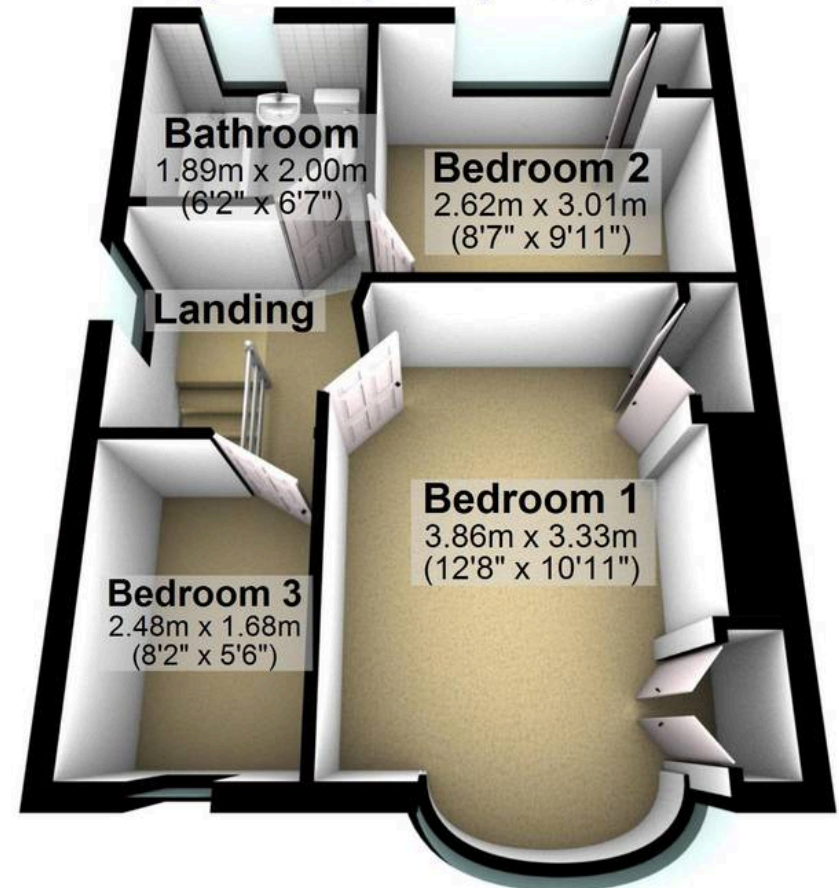
Ground Floor

Approx. 34.0 sq. metres (365.8 sq. feet)



First Floor

Approx. 34.0 sq. metres (365.7 sq. feet)



Total area: approx. 68.0 sq. metres (731.4 sq. feet)

All measurements are approximate
Plan produced using PlanUp.

51 Hollythorpe Road