



WHITEHORNES

Buy. Sell. Let. Relax!

0114 268 8533
info@whitehorses.com
www.whitehorses.com

82 Chelsea Road, Brincliffe

Sheffield

Guide Price £625,000 - £650,000

82 Chelsea Road

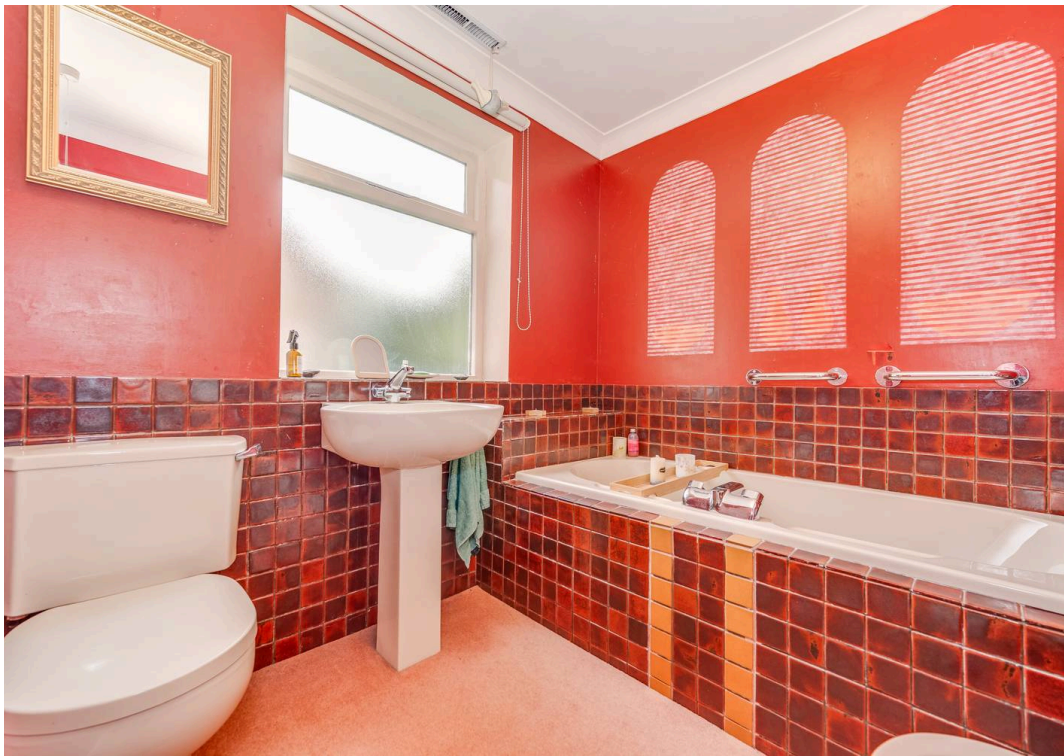
Brincliffe, Sheffield

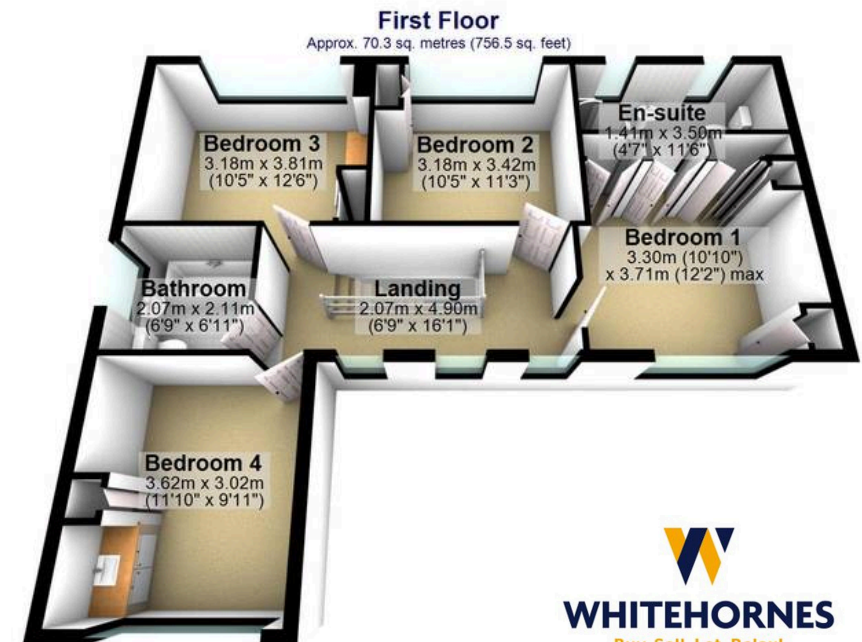
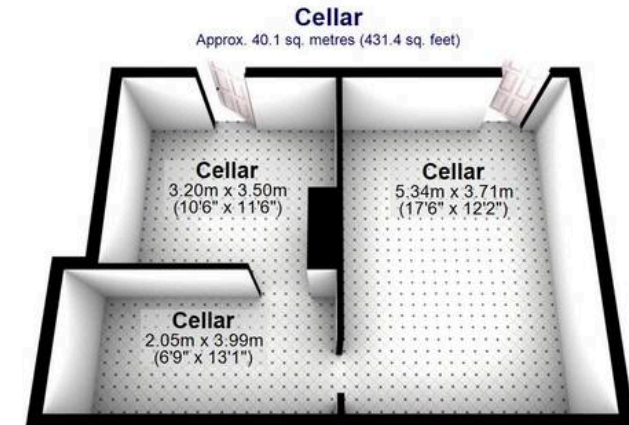
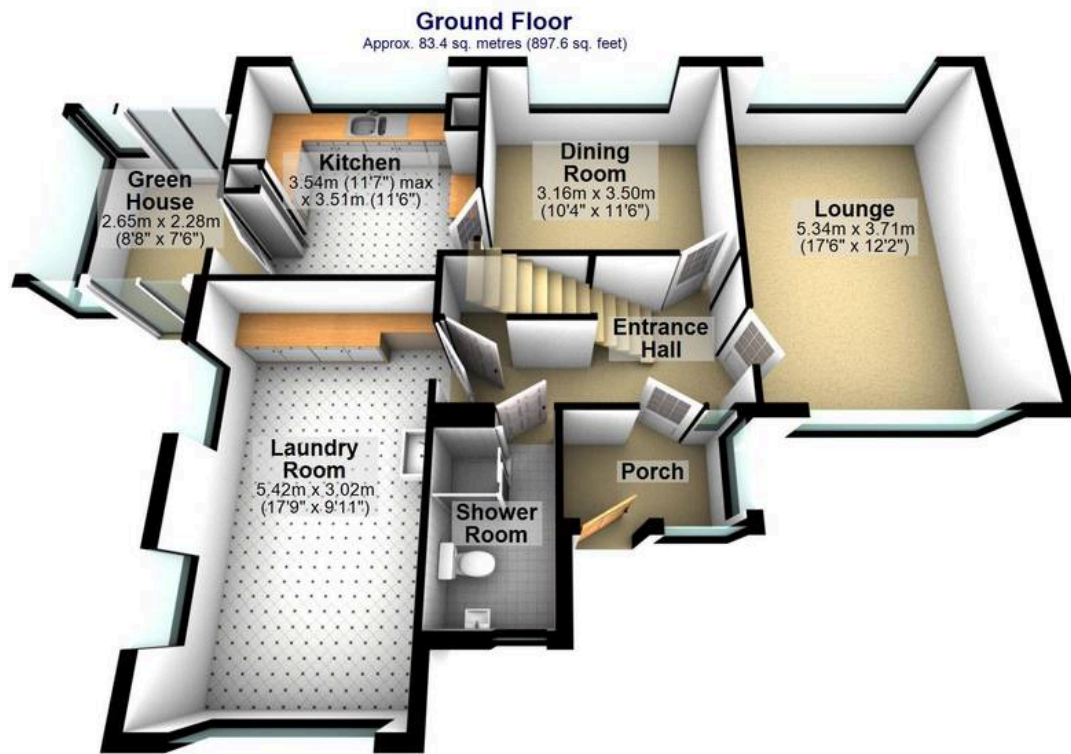
Introducing a once-in-a-lifetime opportunity to acquire this extraordinary four-bedroom detached home located on a prestigious residential road in the heart of Brincliffe, on the south west of the city. Stepping into this iconic property, you are greeted with an impressive 2,085 sq ft of living space spread across two floors. Boasting four generously sized double bedrooms, two bath/shower rooms, this home is within the catchment area of renowned schools such as Greystones Junior, High Storrs and Mercia Secondary, both rated excellent by OFSTED, ensuring an exceptional education for the whole family. Conveniently offered to the market with no chain, a viewing is imperative to fully grasp the immense potential this property holds. The property features a front driveway providing ample off-road parking alongside a fabulous rear private, sizeable sunny garden, perfect for the family.

Council Tax band: F Tenure: Leasehold

- ONCE IN A LIFETIME OPPORTUNITY TO PURCHASE THIS INCREDIBLE FOUR DOUBLE BEDROOM DETACHED HOME
- LOCATED ON THIS ICONIC SHEFFIELD RESIDENTIAL ROAD IN THE HEART OF BRINCLIFFE WITH CHELSEA PARK ACROSS THE ROAD
- OFFERING A SUPER SPACIOUS AND IMPRESSIVE 2,085 SQ FEET OF ACCOMMODATION ACROSS TWO FLOORS
- OFSTED RATED EXCELLENT SCHOOLING CATCHMENTS OF BOTH GREYSTONES JUNIOR HIGH STORRS AND MERCIA SECONDARY







Total area: approx. 193.8 sq. metres (2085.5 sq. feet)

All measurements are approximate
Plan produced using PlanUp.

82 Chelsea Road


WHITEHORNES
Buy. Sell. Let. Relax!

0114 268 8533
info@whitehornes.com
www.whitehornes.com