

689 Manchester Road, Crosspool

Sheffield

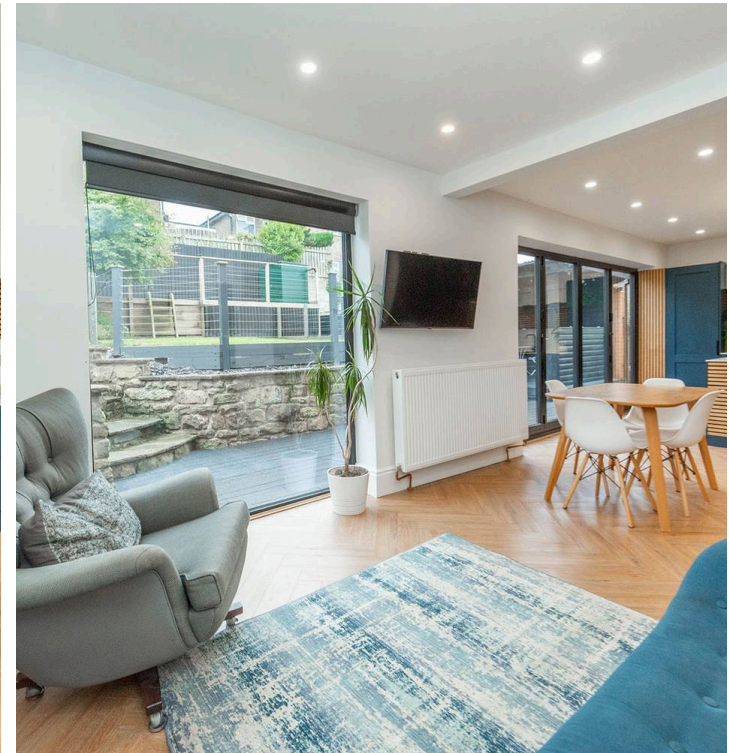
Guide Price £490,000 - £500,000

689 Manchester Road

Crosspool, Sheffield

Nestled in a sought-after location of Crosspool, this absolutely stunning four-bedroom, two-bathroom detached family home is a true masterpiece. Finished internally to the very highest of standards throughout, the current vendors spared no expense in creating this architectural gem. Spanning two fabulous floors of accommodation totalling an impressive 1,479 square feet, this property redefines contemporary open-plan family living at its finest. Framed by the rear open plan, fitted, sleek, kitchen, living diner that enjoys a floor to ceiling window along with bi-fold doors giving access to the garden beyond. Boasting Ofsted-rated excellent schooling catchments, including Lydgate primary and Tapton Secondary, this residence is perfect for families seeking a top-tier educational environment. Council Tax band: D Tenure: Freehold

- ABSOLUTELY STUNNING FOUR BEDROOM TWO BATHROOM DETACHED FAMILY HOME
- FINISHED INTERNALLY TO THE VERY HIGHEST OF STANDARDS THROUGHOUT BY THE CURRENT VENDORS WITH ABSOLUTELY NO EXPENSE SPARED
- REDEFINING THE TERM CONTEMPORARY OPEN PLAN FAMILY LIVING TO THE REAR
- TWO FABULOUS FLOORS OF ACCOMMODATION TOTALLING AN IMPRESSIVE 1,479 SQ FEET
- OFSTED RATED EXCELLENT SCHOOLING CATCHMENTS INCLUDING LYDGATE AND TAPTON SECONDARY
- FINISHED WITH AN EXCEPTIONAL EYE FOR DETAIL AND A FLARE FOR DESIGN
- AMPLE DRIVEWAY TO THE FRONT





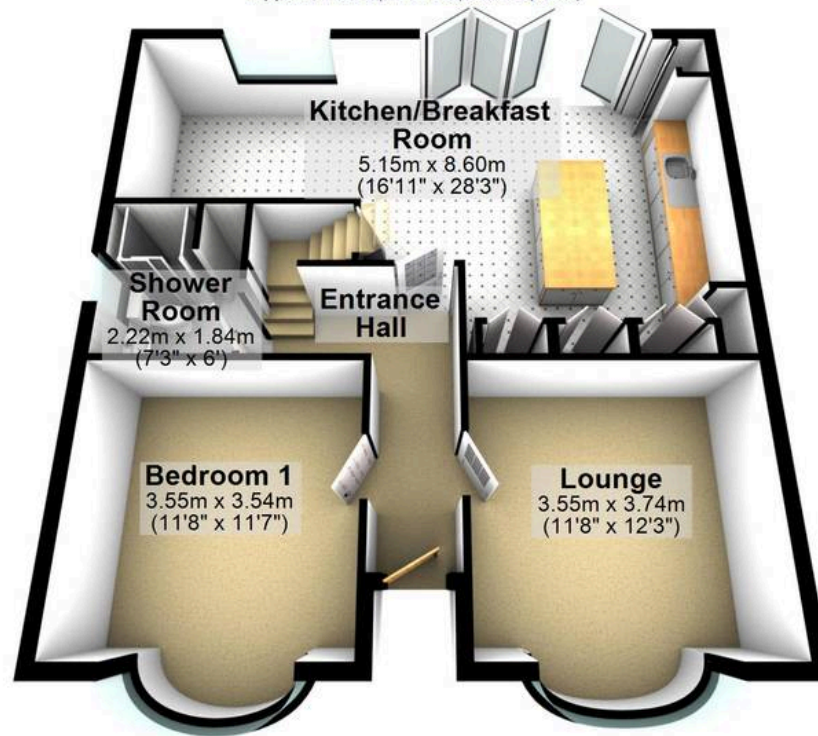
Outbuilding

Approx. 11.9 sq. metres (128.6 sq. feet)



Ground Floor

Approx. 75.2 sq. metres (809.3 sq. feet)



First Floor

Approx. 50.3 sq. metres (541.6 sq. feet)



Total area: approx. 137.5 sq. metres (1479.5 sq. feet)

All measurements are approximate
Plan produced using PlanUp.

689 Manchester Road



WHITEHORNES

Buy. Sell. Let. Relax!

0114 268 8533
info@whitehorses.com
www.whitehorses.com