



WHITEHORSES

Buy. Sell. Let. Relax!

0114 268 8533
info@whitehorses.com
www.whitehorses.com

22 Ashbury Lane, Norton

Sheffield

Guide Price **£850,000**

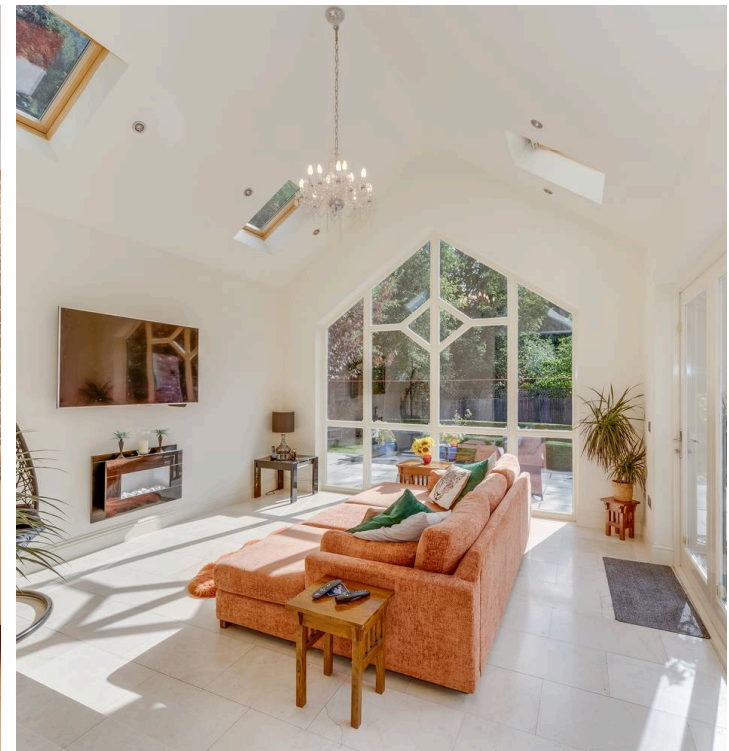
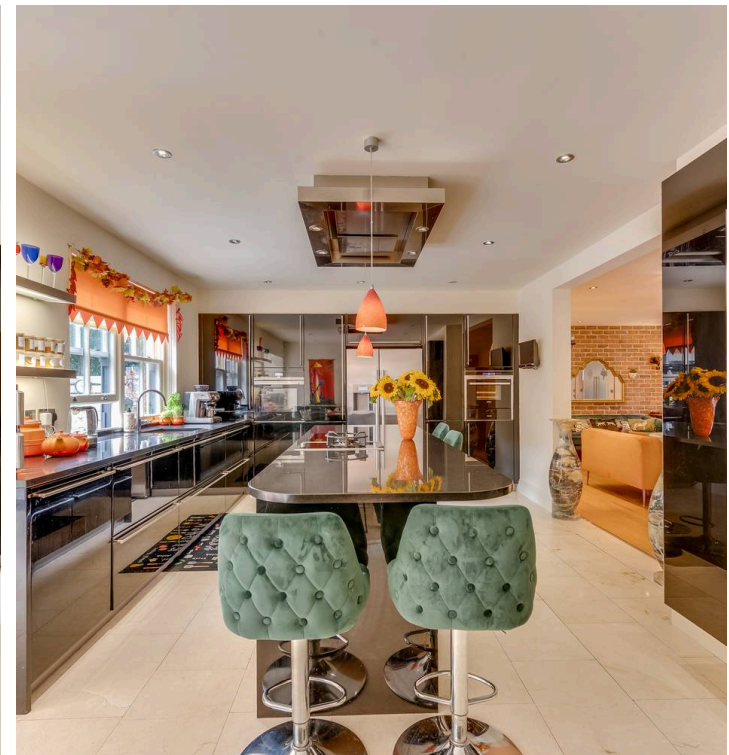
22 Ashbury Lane

Norton, Sheffield

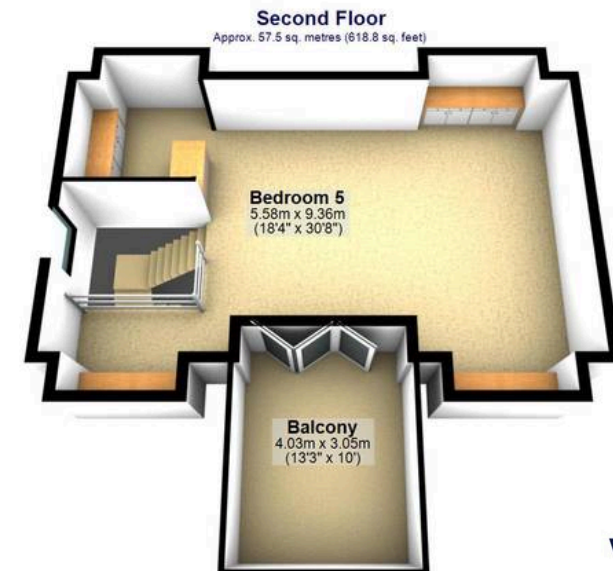
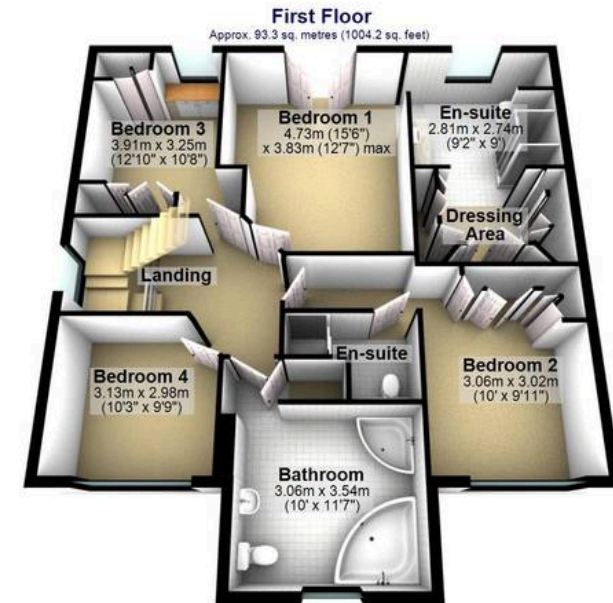
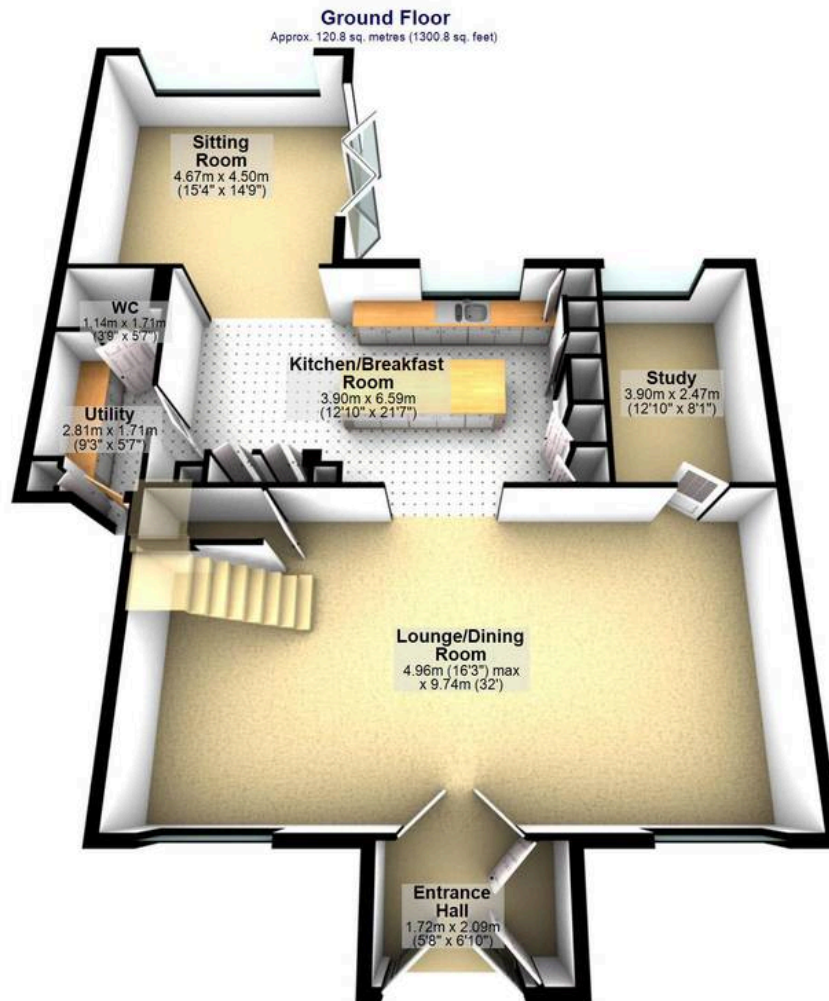
Nestled on a quiet, private road (cul-de-sac), this stunning 4-bedroomed detached family home presents a rare opportunity for luxurious living. Designed and meticulously built by the current owners, no expense has been spared throughout, ensuring ultimate comfort and style. The property boasts a bespoke handmade kitchen and offers ample open-plan living spaces designed with families in mind. Situated conveniently close to Graves Park and numerous green spaces and also benefitting from off-road parking for multiple vehicles and a detached garage, enhancing every-day practicality. Furthermore, the property falls within the catchment area of reputable local schools, adding to its appeal as a family home. Council Tax band: TBD

Tenure: Leasehold

- FOUR BEDROOMED DETACHED FAMILY HOME
- IDEALLY LOCATED ON PRIVATE A ROAD
- LARGE AND WELL ENCLOSED PLOT
- DESIGNED AND BUILT BY CURRENT OWNERS
- NO EXPENSE SPARED THROUGHOUT
- BESPOKE HANDMADE KITCHEN
- CLOSE TO GRAVES PARK AND AMPLE GREEN SPACES
- OFF ROAD PARKING FOR NUMEROUS VEHICLES AND DETACHED GARAGE
- IN THE CATCHMENT FOR LOCAL REPUTABLE SCHOOLS
- LARGE OPEN PLAN LIVING SPACES DESIGNED WITH FAMILIES IN MIND







Total area: approx. 271.6 sq. metres (2923.7 sq. feet)

All measurements are approximate
Plan produced using PlanItUp