



WHITEHORNES

Buy. Sell. Let. Relax!

0114 268 8533
info@whitehornes.com
www.whitehornes.com

416 Abbeydale Road, Nether Edge

Sheffield

Guide Price £250,000 - £260,000

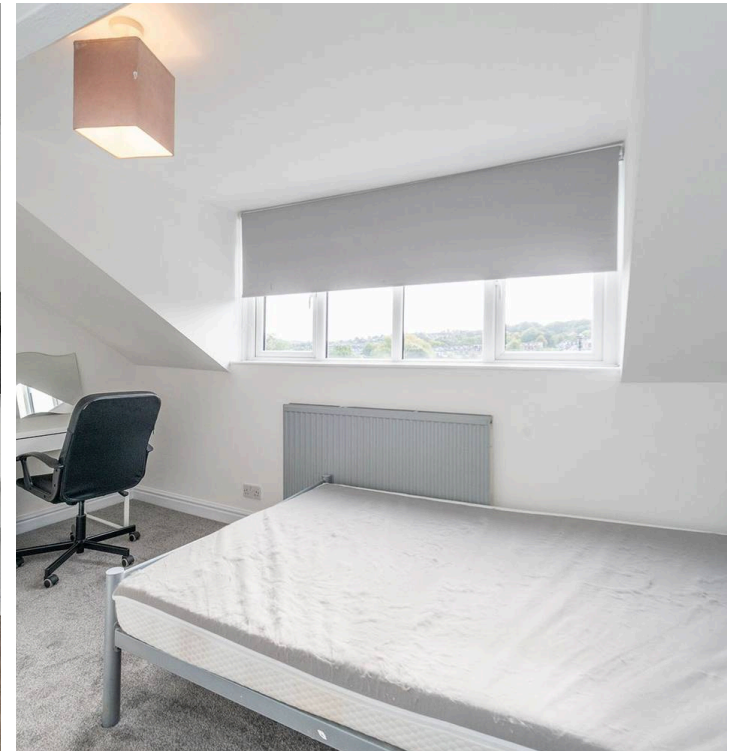
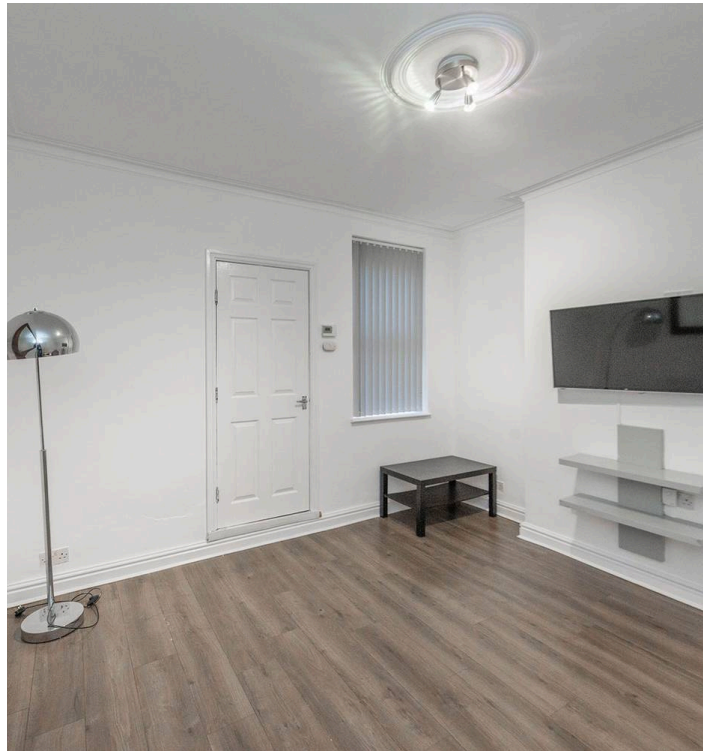
416 Abbeydale Road

Nether Edge, Sheffield

A absolutely fabulous four double bedroom, two bathroom bay-windowed Victorian terraced home, perfectly suited for first-time buyers, professional couples, or young families alike. Recently finished internally by the current vendors, this property boasts newly fitted kitchens, bathrooms, full redecorating, and flooring, ensuring a modern and comfortable living space. Spread across three impressive floors, this home offers a total of 1,167 sq feet of spacious accommodation, with a double rear off-shot, front sunny, private fenced off gardens, and on-street parking. Situated in an elevated position, the property ensures privacy and offers some far-reaching views to the front, providing a peaceful retreat in the heart of the bustling S7 neighbourhood.

Council Tax band: TBD Tenure: Leasehold

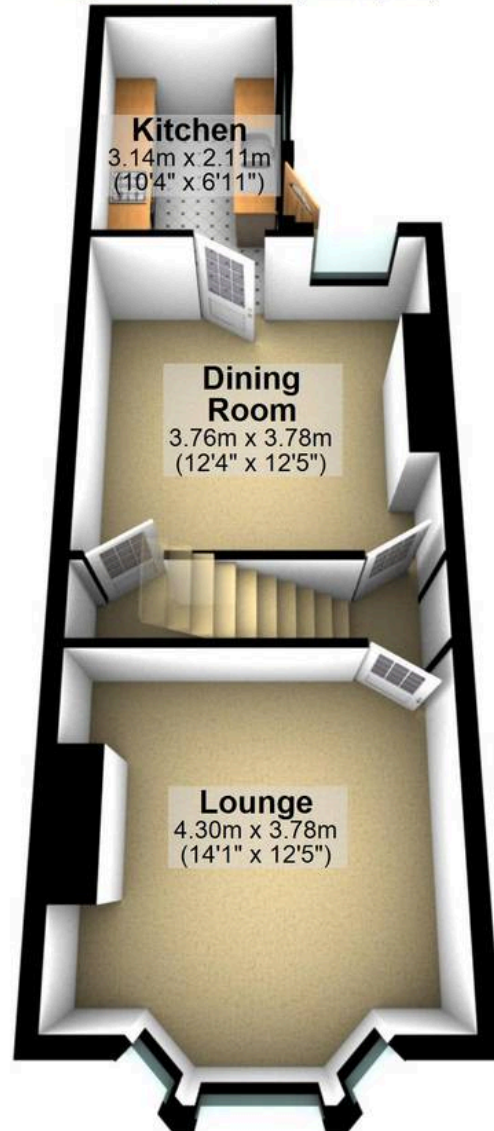
- FABULOUS FOUR DOUBLE BEDROOM TWO BATHROOM BAY WINDOWED VICTORIAN TERRACED HOME
- RECENTLY FINISHED INTERNALLY BY THE CURRENT VENDORS WITH NEWLY FITTED KITCHEN BATHROOMS FULL REDECORATING AND FLOORING
- PERFECT FOR THE FIRST TIME BUYER PROFESSIONAL COUPLE OR YOUNG FAMILY ALIKE
- DOUBLE REAR OFF SHOT REAR AND FRONT SUNNY GARDENS AND ON STREET PARKING
- THREE FLOORS OF ACCOMMODATION TOTALLING AN IMPRESSIVE 1,167 SQ FEET
- ELEVATED POSITION ENSURING PRIVACY AND SOME FAR REACHING VIEWS





Ground Floor

Approx. 38.1 sq. metres (409.8 sq. feet)



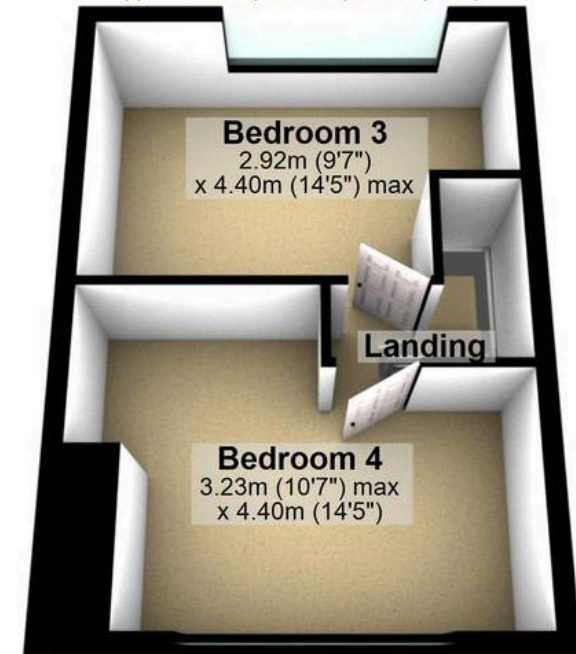
First Floor

Approx. 42.8 sq. metres (460.8 sq. feet)



Second Floor

Approx. 27.6 sq. metres (297.0 sq. feet)



Total area: approx. 108.5 sq. metres (1167.7 sq. feet)

All measurements are approximate
Plan produced using PlanUp.

416 Abbeydale Road


WHITEHORNES
Buy. Sell. Let. Relax!

0114 268 8533
info@whitehornes.com
www.whitehornes.com