



WHITEHORNES
Buy. Sell. Let. Relax!
0114 268 8533
info@whitehorns.com
www.whitehorns.com

211 Bannerdale Road, Ecclesall

Sheffield

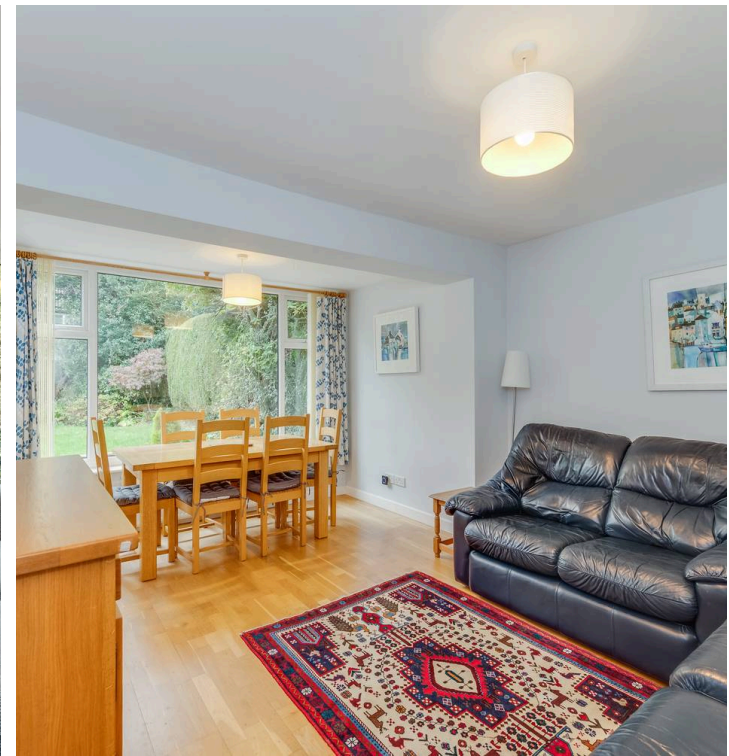
Guide Price £395,000 - £415,000

211 Bannerdale Road

Ecclesall, Sheffield

An absolutely stunning, beautifully presented and very well proportioned three double bed roomed semi detached family home. Offering super light and spacious accommodation across two floors currently that total an impressive 1,204 sq feet and with further potential to either extend to the side, loft and rear as neighbouring properties have done so (subject to planning) to create a forever home. Pitch perfect for the growing family market number 211 enjoys a rear open plan kitchen diner, off road parking and garage, private rear garden and some fabulous views over towards Brincliffe. Council Tax band: C Tenure: Leasehold

- FABULOUS LARGER THAN EXPECTED THREE DOUBLE BEDROOM SEMI DETACHED FAMILY HOME
- HUGE OPPORTUNITY TO FURTHER EXTEND THE EXISTING FOOTPRINT AS NEIGHBOURS HAVE DONE SO SUBJECT TO PLANNING TO THE SIDE REAR AND LOFT
- TWO STUNNING FLOORS OF ACCOMMODATION TOTALLING AN IMPRESSIVE 1,204 SQ FEET
- PERFECT FOR THE GROWING FAMILY MARKET LOOKING FOR A FOREVER HOME
- OFSTED RATED EXCELLENT SCHOOLING CATCHMENTS INCLUDING GREYSTONES JUNIORS AND BOTH HIGH STORRS/MERCIA SECONDARY
- HEART OF ULTRA POPULAR ECCLESALL ON THE SOUTH WEST OF THE CITY OFFERING THE PEAK DISTRICT ON THE DOORSTEP
- NUMEROUS INDEPENDENT LOCAL AMENITIES INCLUDING CAFES EATERIES AND SHOPS ARE SHORT STROLL WITHIN BANNER CROSS
- LARGE REAR PRIVATE SUNNY SOUTH FACING FAMILY GARDEN NEWLY LAID DRIVEWAY AND ATTACHED GARAGE TO THE FRONT





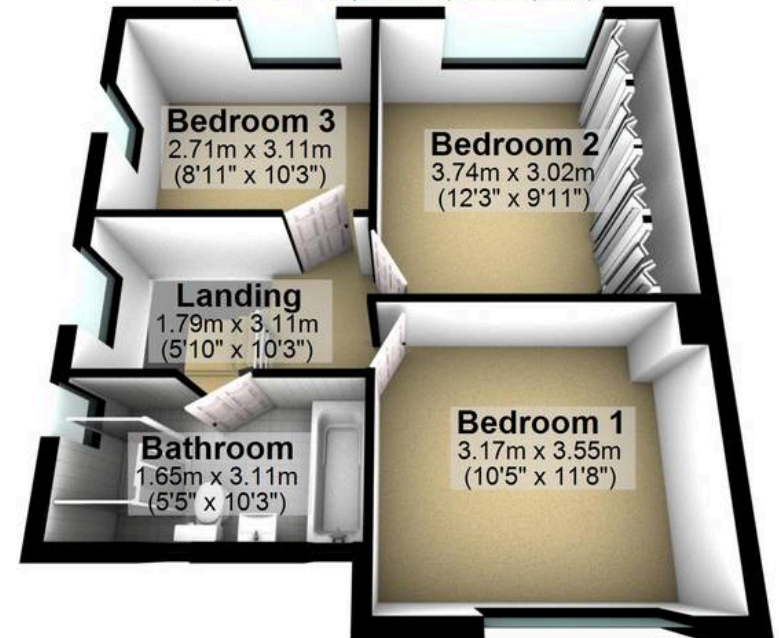
Ground Floor

Approx. 66.6 sq. metres (716.7 sq. feet)



First Floor

Approx. 45.3 sq. metres (487.6 sq. feet)



Total area: approx. 111.9 sq. metres (1204.3 sq. feet)

All measurements are approximate
Plan produced using PlanUp.

211 Bannerdale Road