



WHITEHORSES

Buy. Sell. Let. Relax!

0114 268 8533
info@whitehorses.com
www.whitehorses.com

47 Greenhill Main Road, Sheffield

Sheffield

In Excess of **£450,000**

47 Greenhill Main Road

Sheffield, Sheffield

Dating back to 1712 and steeped in local history is this stunning, grade two listed three bedroomed, stone built cottage. Offering an incredibly rare opportunity to market, Croft farm enjoys a super deceptive and light feel throughout the three floors of accommodation and its to say that viewing is absolutely essential to fully appreciate the size and style on offer by this fabulous home. Retaining the original features, period character and charm associated with a property from this era and effortlessly blending together with a modern twist that will suit either the growing family market or professional couple. Enjoying large rear sun trap garden, ample parking and with vast potential to easily reconfigure

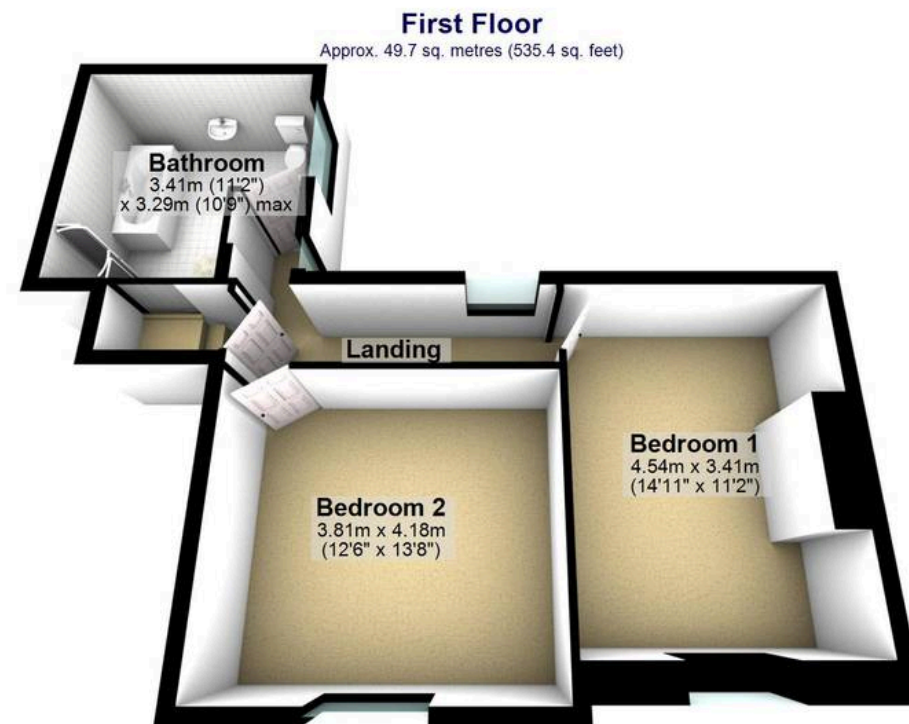
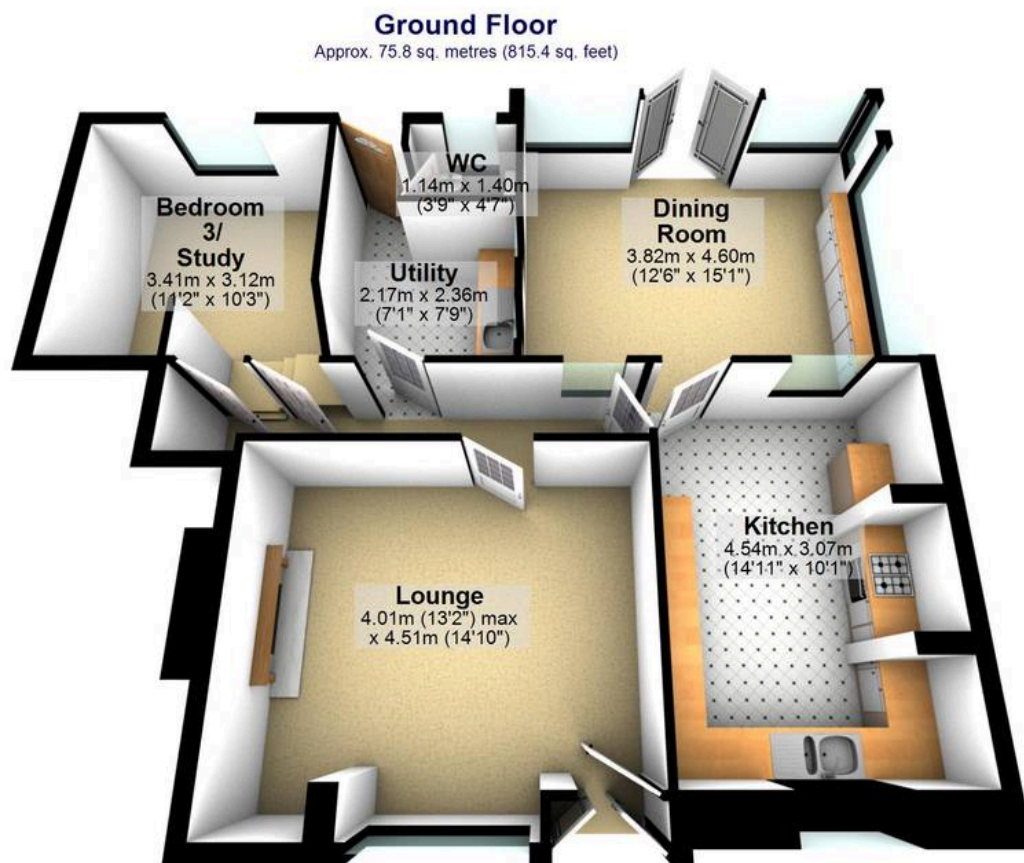
Council Tax band: D

Tenure: Freehold

- CROFT FARM DATES BACK TO 1712
- HEART OF GREENHILL VILLAGE
- STONE BUILT COTTAGE HOME
- VERSATILE ACCOMMODATION TO SUIT A RANGE OF BUYERS
- LARGE GARDEN AND AMPLE OFF ROAD PARKING
- EXTREME RARITY TO MARKET
- VAST POTENTIAL TO EASILY RECONFIGURE THE EXISTING ACCOMMODATION
- CLOSE TO THE PEAK DISTRICT
- NUMEROUS BEAUTIFUL ORIGINAL PERIOD FEATURES THROUGHOUT A MUST VIEW
- INCREDIBLY DECEPTIVE FROM THE FRONT







Total area: approx. 136.8 sq. metres (1472.9 sq. feet)

All measurements are approximate
Plan produced using PlanUp.

47 Greenhill Main Road