



WHITEHORNS

Buy. Sell. Let. Relax!

0114 268 8533
info@whitehorns.com
www.whitehorns.com

15 Kildale Gardens, Mosborough

Sheffield

Guide Price **£240,000**

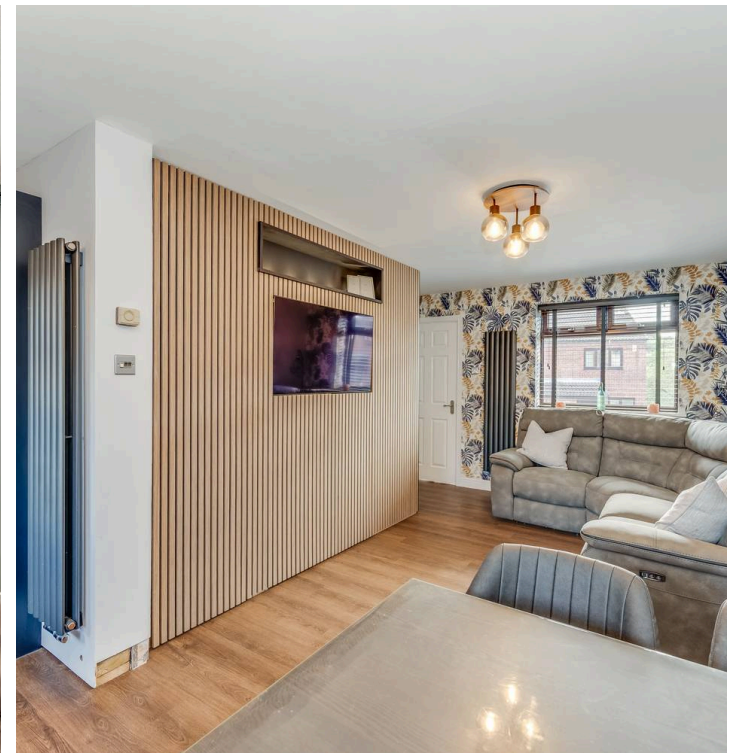
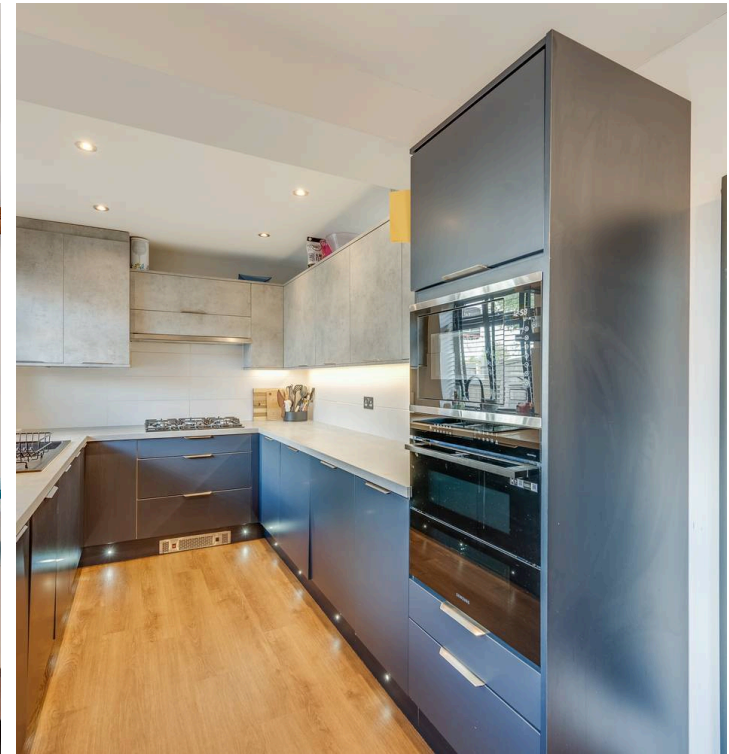
15 Kildale Gardens

Mosborough, Sheffield

Perfect for growing families and first time buyers alike is this spacious and immaculately presented three bedroomed semi-detached family home. Having been thoughtfully extended to the side to provide ample open spaces and a second reception room downstairs as well as an extra bedroom upstairs this property offers a versatile range of accommodation spaced across two levels that would suit any buyers. Perfectly located in the heart of this much sought after suburb number 15 is an ideal position to take advantage of not only the nearby wealth of local amenities as well as superb transport links and reputable local schools. Briefly consists of well appointed kitchen dining room, lounge, play room/study, three bedrooms and family bathroom. Council Tax band: A

Tenure: Leasehold

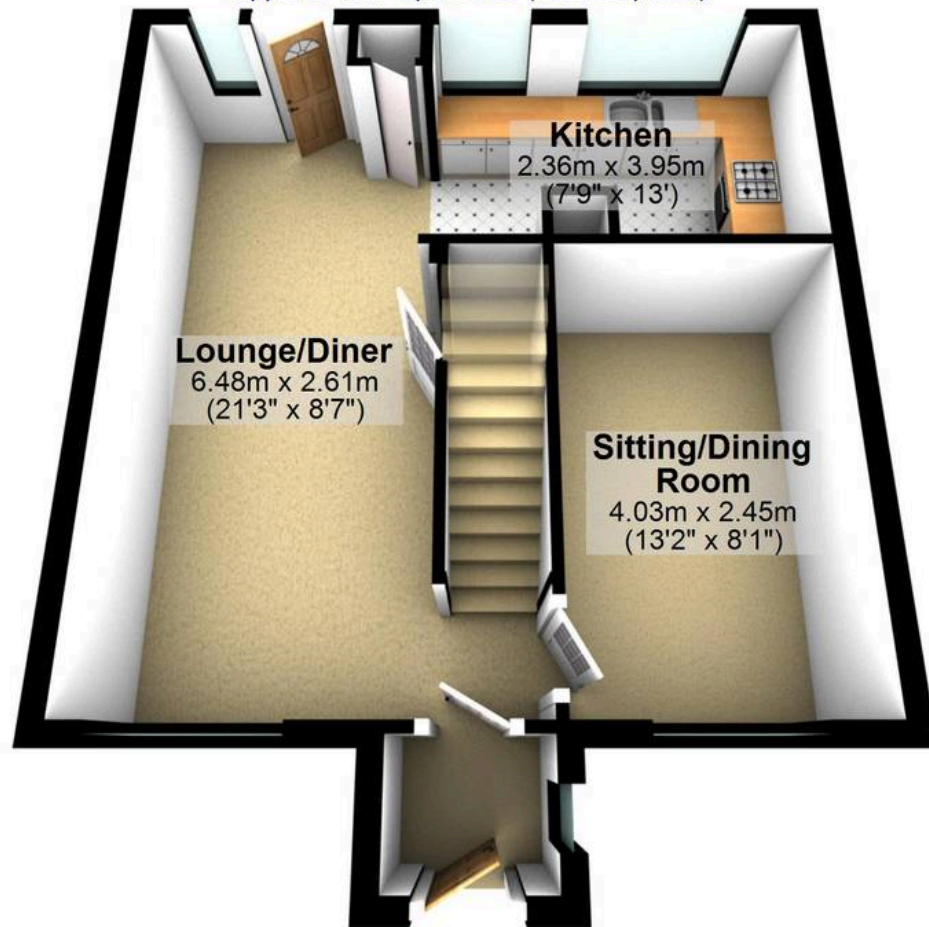
- THREE BEDROOMED SEMI-DETACHED HOME
- PERFECT FOR GROWING FAMILIES AND FIRST TIME BUYERS ALIKE
- GREAT LOCATION CLOSE TO TRANSPORT LINKS AND AMENITIES
- DOUBLE STORY EXTENTION TO THE SIDE
- EXCEPTIONALLY WELL FINISHED THROUGHOUT
- PRIVATE GARDEN AND OFF ROAD PARKING
- QUIET LOCATION
- SITS IN THE CATCHMENT FOR LOCAL REPUTABLE SCHOOLS
- TWO RECEPTION ROOMS PROVIDING AMPLE SPACE FOR GROWING FAMILIES
- LEASEHOLD PROPERTY





Ground Floor

Approx. 42.1 sq. metres (453.6 sq. feet)



First Floor

Approx. 40.6 sq. metres (437.5 sq. feet)



Total area: approx. 82.8 sq. metres (891.1 sq. feet)

All measurements are approximate
Plan produced using PlanUp.

15 Kildale Gardens