



WHITEHORNS

Buy. Sell. Let. Relax!

0114 268 8533
info@whitehorns.com
www.whitehorns.com

9 Bramwith Road, Nether Green

Sheffield

Guide Price £425,000 - £450,000

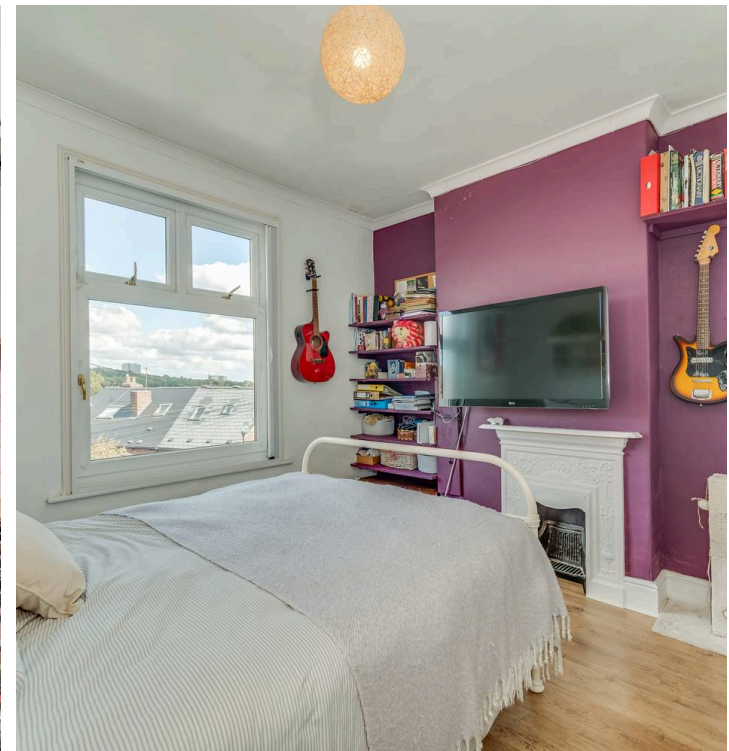
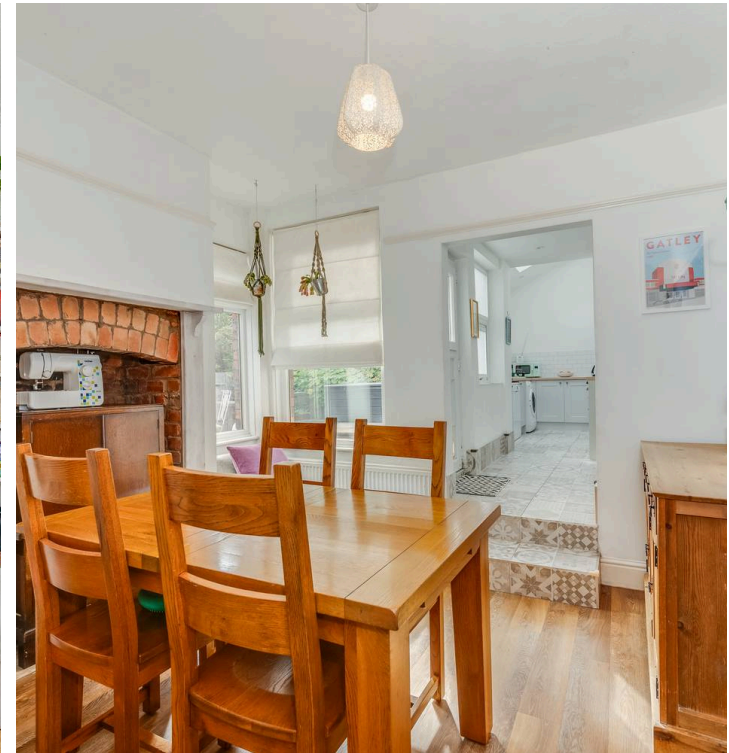
9 Bramwith Road

Nether Green, Sheffield

A fabulous three double-bedroom semi-detached family home awaits in the heart of ultra-popular Nether Green. This beautiful home boasts three impressive floors of accommodation, totalling 1,171 square feet, with the potential to convert the existing basement into additional living space if required. Nestled on a quiet residential road, the property enjoys an elevated position, ensuring privacy and offering some far-reaching views to the front. Situated within the catchment areas of Ofsted-rated excellent schools, including Nether Green Junior and High Storrs Secondary, this home is absolutely pitch perfect for the growing family market. Viewing is essential to truly appreciate all this property has to offer. Furthermore, a private rear sunny garden and convenient on-road parking to the front provide added convenience.

Council Tax band: B Tenure: Leasehold

- FABULOUS THREE DOUBLE BEDROOM SEMI DETACHED FAMILY HOME
- THREE IMPRESSIVE FLOORS OF ACCOMMODATION TOTALLING 1,171 SQ FEET ALONG WITH POTENTIAL TO CONVERT THE EXISTING BASEMENT
- ELEVATED POSITION ENSURING PRIVACY AND SOME FAR REACHING VIEWS TO THE FRONT
- QUIET RESIDENTIAL ROAD IN THE VERY GEART OF ULTRA POPULAR NETHER GREEN
- OFSTED RATED EXCELLENT SCHOOLING CATCHMENTS INCLUDING NETHER GREEN JUNIOR AND HIGH STORRS SECONDARY
- PITCH PERFECT FOR THE GROWING FAMILY MARKET WITH VIEWING ESSENTIAL TO DO FULL JUSTICE
- PRIVATE REAR SUNNY GARDEN AND EASY ON ROAD PARKING TO THE FRONT





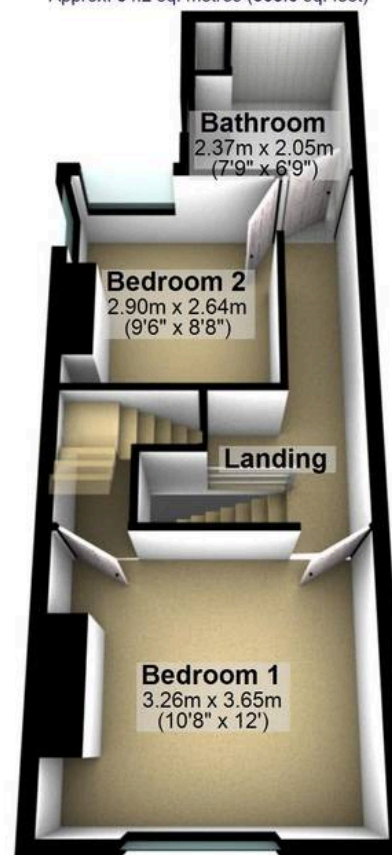
Ground Floor

Approx. 43.0 sq. metres (462.3 sq. feet)



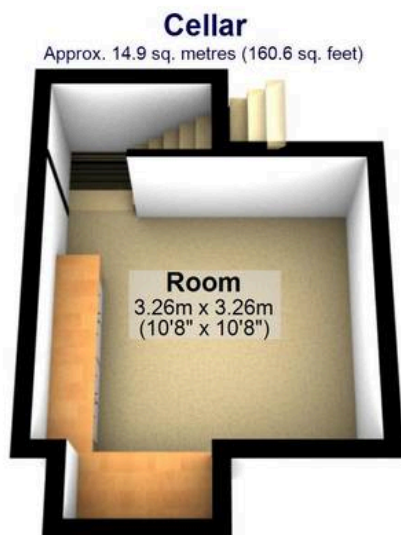
First Floor

Approx. 34.2 sq. metres (368.6 sq. feet)



Second Floor

Approx. 16.7 sq. metres (179.5 sq. feet)



Total area: approx. 108.8 sq. metres (1171.0 sq. feet)

All measurements are approximate
Plan produced using PlanUp.

9 Bramwith Road