



WHITEHORNS

Buy. Sell. Let. Relax!

0114 268 8533
info@whitehorns.com
www.whitehorns.com



107 Bradley Street, Sheffield

Sheffield

Guide Price **£300,000**

107 Bradley Street

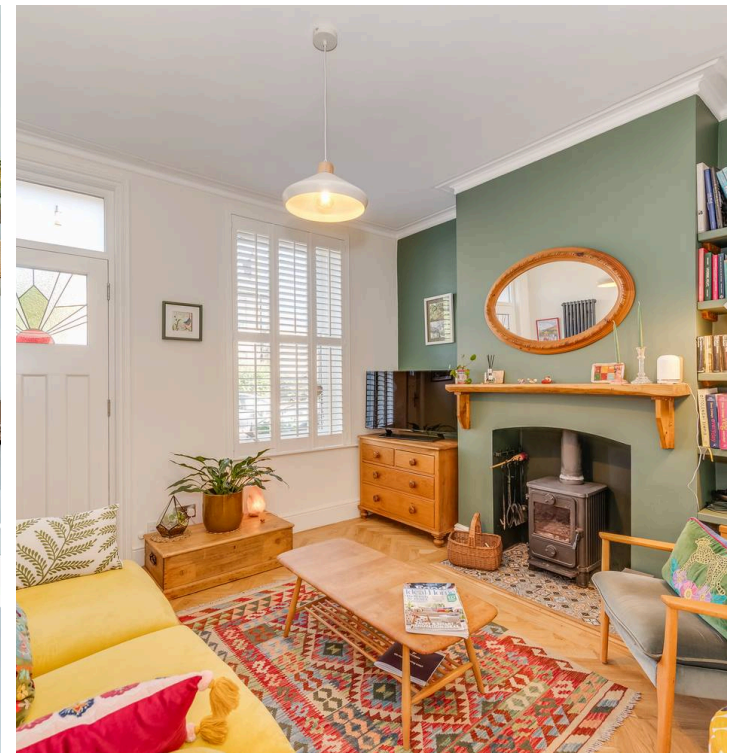
Sheffield, Sheffield

An early viewing is advised to truly appreciate both the standard of accommodation and space on offer in this stylish three bedroomed mid-terrace property. Ideally located in the heart of bustling Crookes with all of its many shops, cafes pubs plus Bole Hills green space within easy walking distance. This property would perfectly suit both first time buyers and growing families alike. Having been tastefully finished throughout and boasting a converted basement, the property briefly consists of a large and well appointed kitchen/dining room, converted basement, bright and airy lounge, a double bedroom, a very spacious loft bedroom, single bedroom and family bathroom. Outside is a beautiful and private rear garden and to the front is ample on street parking.

Council Tax band: A

Tenure: Leasehold

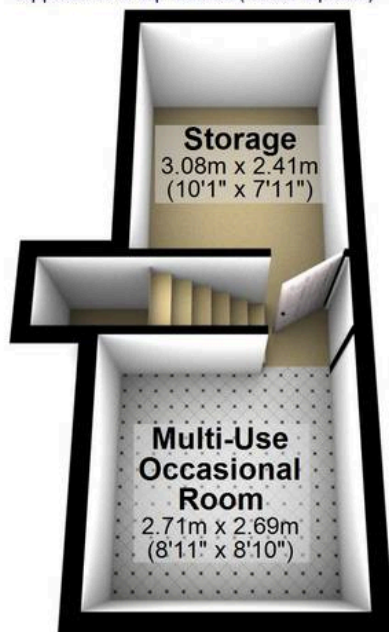
- THREE BEDROOMED MID-TERRACED FAMILY HOME
- PERFECT FOR FIRST TIME BUYERS AND GROWING FAMILIES ALIKE
- CONVERTED BASEMENT PROVIDING EXTRA SPACE
- SITUATED IN THE HEART OF CROOKES
- EASY ACCESS TO A WEALTH OF LOCAL SHOPS, CAFES AND PUBS
- MANY LOCAL REPUTABLE SCHOOLS
- TASTEFULLY DECORATED THROUGHOUT
- GREAT PRIVATE GARDEN
- AMPLE ON STREET PARKING
- NO ONWARD CHAIN





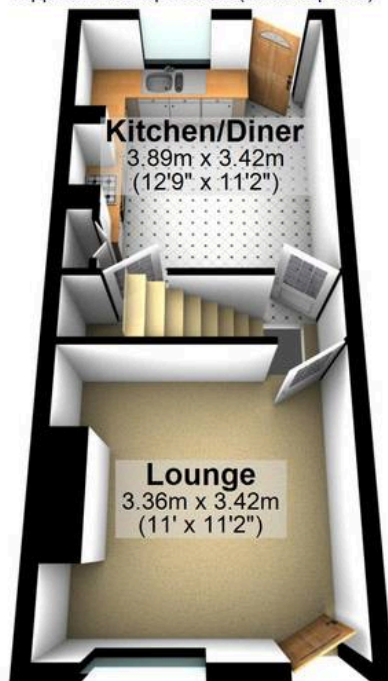
Basement

Approx. 17.9 sq. metres (193.2 sq. feet)



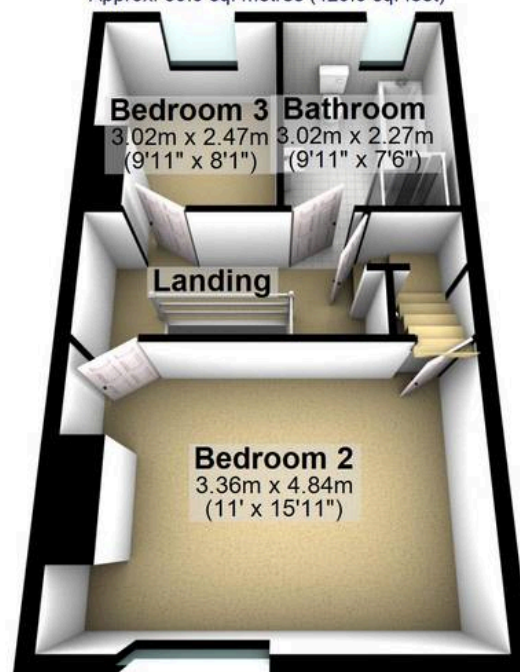
Ground Floor

Approx. 28.2 sq. metres (303.2 sq. feet)



First Floor

Approx. 39.9 sq. metres (429.5 sq. feet)



Second Floor

Approx. 29.3 sq. metres (315.9 sq. feet)



Total area: approx. 115.4 sq. metres (1241.8 sq. feet)

All measurements are approximate
Plan produced using PlanUp.

107 Bradley Street



WHITEHORNS

Buy. Sell. Let. Relax!

0114 268 8533
info@whitehorns.com
www.whitehorns.com