



**WHITEHORNES**

Buy. Sell. Let. Relax!

0114 268 8533  
info@whitehorns.com  
www.whitehorns.com

**67 Rustlings Road, Endcliffe**

Sheffield

**Guide Price £595,000**



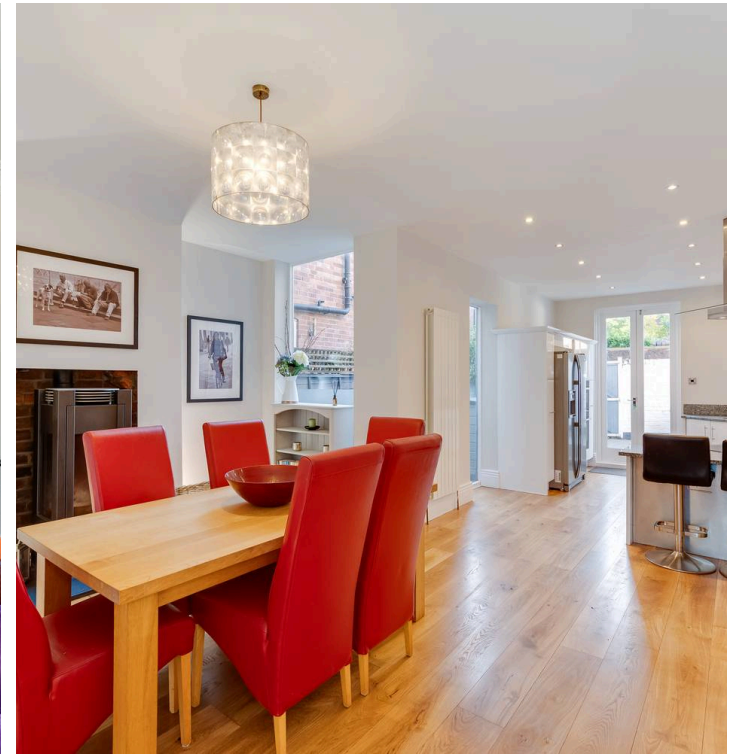
# 67 Rustlings Road

Endcliffe, Sheffield

This stunning four-bedroom mid-terraced house presents an exquisite opportunity to own a bay-windowed Victorian villa terrace home in the heart of the highly sought-after Endcliffe neighbourhood towards the south west of Sheffield. Boasting panoramic views overlooking the picturesque Endcliffe Park, this iconic property sits elegantly on one of Sheffield's most renowned residential roads. Spanning four impressive floors with a total area of 1,882 square feet, this immaculately finished home reflects a pinnacle of design and luxury. The property is beautifully finished throughout by the current owners, showcasing a meticulous attention to detail and a flair for sophisticated interiors and design. Positioned within excellent Ofsted-rated school catchment areas, including Greystones Juniors and High Storrs Secondary.

Council Tax band: D Tenure: Leasehold

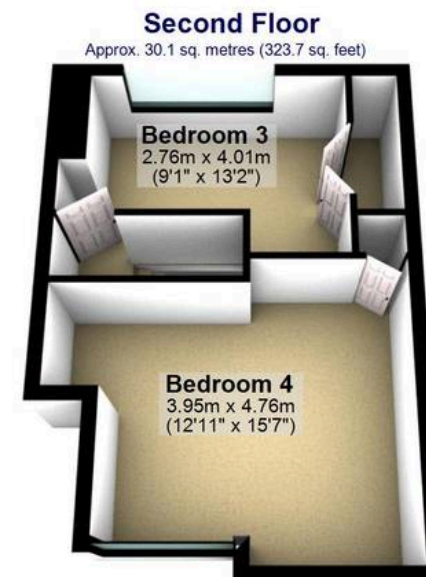
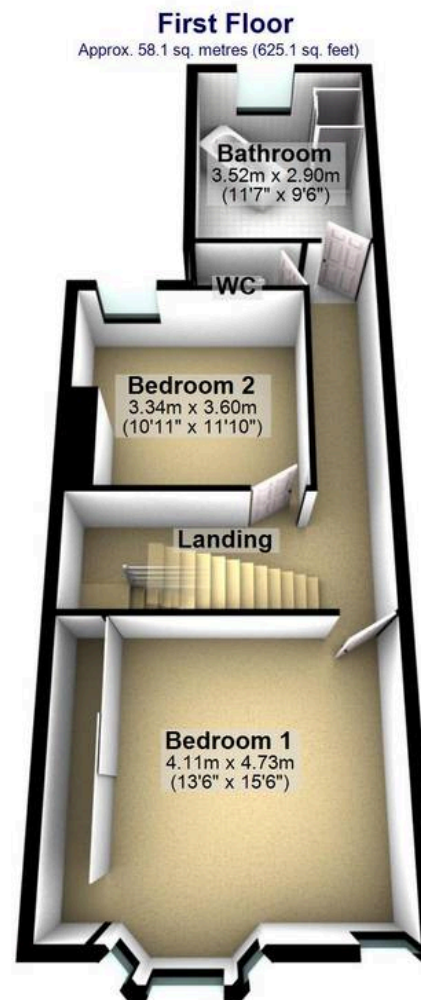
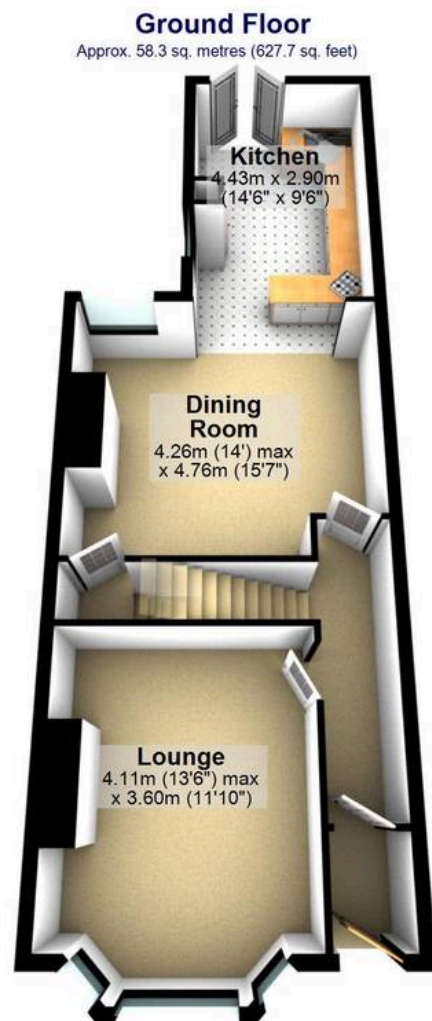
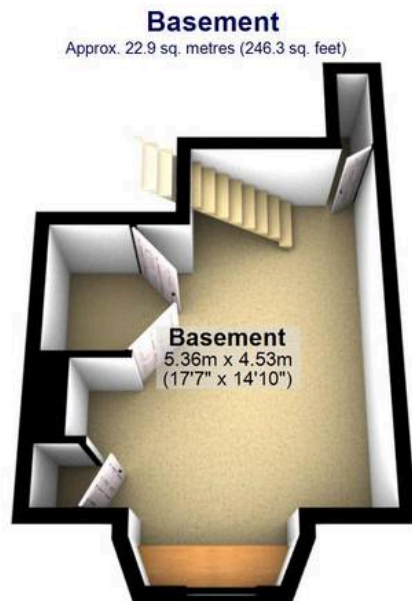
- STUNNING FOUR DOUBLE BEDROOM BAY WINDOWED VICTORIAN VILLA TERRACE HOME
- AFFORDING SOME OF THE MOST IMPRESSIVE VIEWS OVER ENDCLIFFE PARK TO THE FRONT
- LOCATED IN THE VERY HEART OF ULTRA POPULAR ENDCLIFFE ON THE SOUTH WEST OF THE CITY ON THIS ICONIC SHEFFIELD RESIDENTIAL ROAD
- FOUR STUNNING FLOORS OF ACCOMMODATION TOTTALLING AN IMPRESSIVE 1,882 SQ FEET
- FINISHED INTERNALLY TO A SUPERBLY HIGH STANDARD BY THE CURRENT VENDORS WITH NO EXPENSE SPARED AND A FLARE FOR DESIGN











Total area: approx. 169.3 sq. metres (1822.8 sq. feet)

All measurements are approximate  
Plan produced using PlanUp.

**67 Rustlings Road**