



**WHITEHORSES**

Buy. Sell. Let. Relax!

0114 268 8533  
info@whitehorses.com  
www.whitehorses.com



**9 Homestead Close, Sheffield**

Sheffield

Guide Price **£165,000**



# 9 Homestead Close

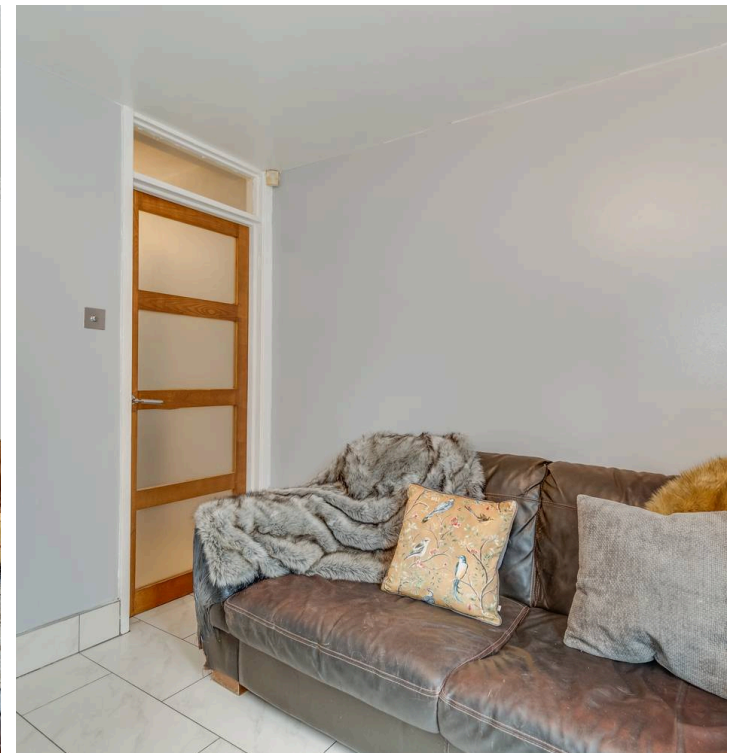
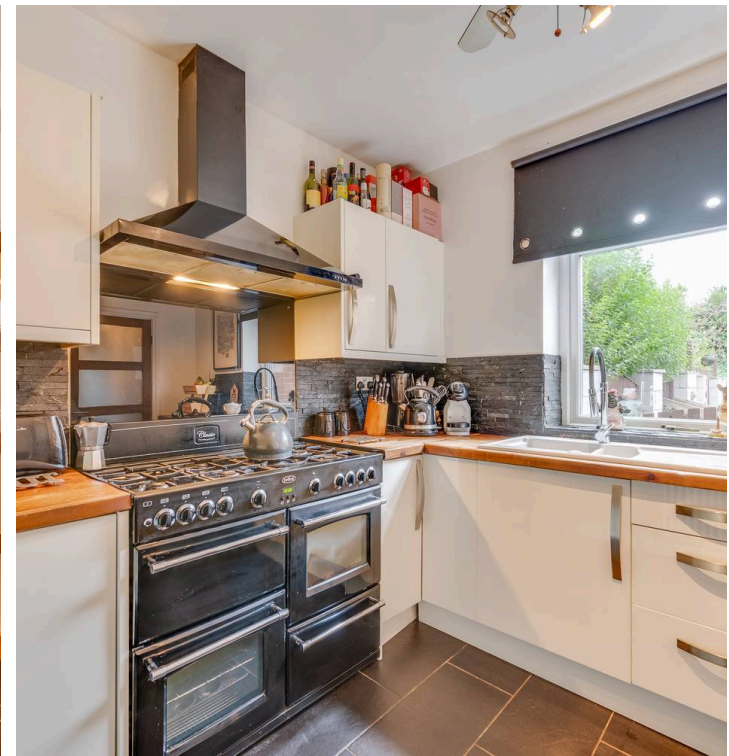
Sheffield, Sheffield

Perfect for growing families and first time buyers alike is this spacious and immaculately presented three bedroomed extended semi-detached family home. Located in the heart of this popular suburb with easy access to a wealth of local shops and green spaces as well as unbeatable transport links this property has been tastefully finished throughout to offer a versatile range of accommodation that will suit any buyer. Briefly consists of entrance hallway, lounge, dining room, well appointed kitchen, two double bedrooms, single bedroom/office and family bathroom. Outside is off road parking and to the rear is a private rear garden ideal for families and pets.

Council Tax band: A

Tenure: Freehold

- THREE BEDROOMED SEMI-DETACHED HOME
- GREAT LOCATION CLOSE TO SHOPS AND PUBLIC TRANSPORT
- EXCELLENT MODERN FINISH THROUGHOUT
- PERFECT FOR FIRST TIME BUYERS AND GROWING FAMILIES
- EARLY VIEWING IS ADVISED
- OFF ROAD PARKING TO THE FRONT
- PRIVATE REAR GARDENS
- EXTENSION TO THE REAR OFFERS A GREAT SPACE FOR FAMILIES
- REPUTABLE LOCAL SCHOOLS
- FREEHOLD PROPERTY AND EPC RATING D



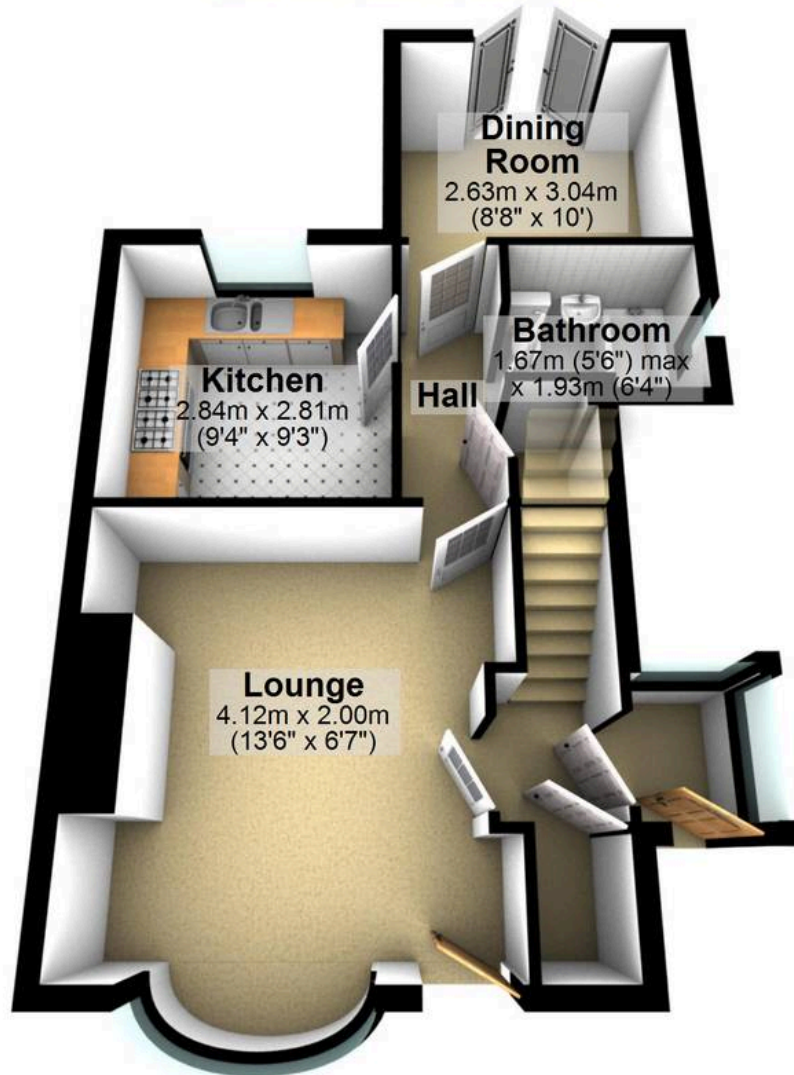






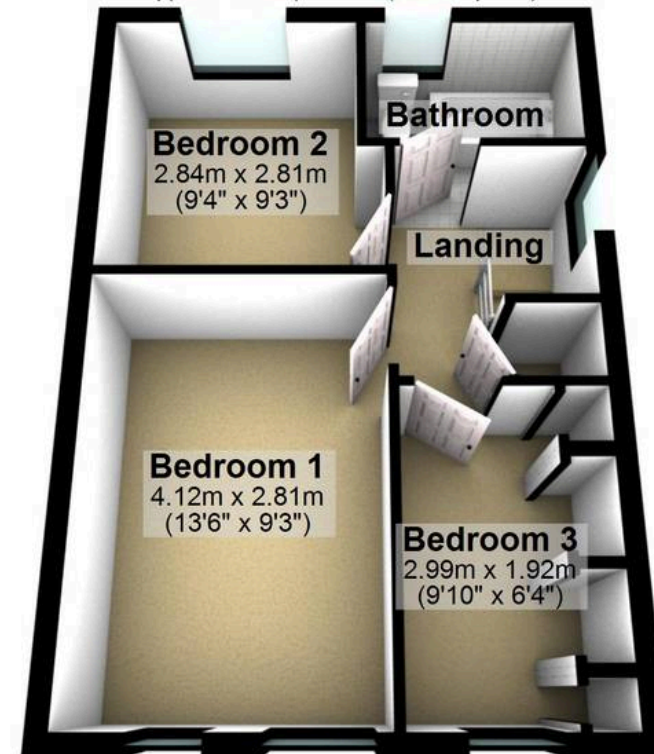
## Ground Floor

Approx. 46.2 sq. metres (497.3 sq. feet)



## First Floor

Approx. 34.1 sq. metres (366.9 sq. feet)



Total area: approx. 80.3 sq. metres (864.1 sq. feet)

All measurements are approximate  
Plan produced using PlanUp.

**9 Homestead Close**



**WHITEHORSES**

Buy. Sell. Let. Relax!

0114 268 8533  
info@whitehorses.com  
www.whitehorses.com