



**WHITEHORSES**

Buy. Sell. Let. Relax!

0114 268 8533  
info@whitehorses.com  
www.whitehorses.com

**104 Clifton Crescent, Handsworth**

Sheffield

Guide Price **£195,000**



# 104 Clifton Crescent

Handsworth, Sheffield

Available to the market with the added benefit of no onward chain and vacant possession, this superb three bedroomed semi-detached property is the perfect property for first time buyers or investors alike. Briefly consisting of a spacious family living/dining room, well appointed kitchen, three bedrooms and a family bathroom, to the outside is a stunning private, rear garden which must be viewed to be truly appreciated. Located close by to numerous local amenities as well as easy access to transport links such as Sheffield Parkway. Situated in catchment areas for local schools including Athelstan Primary School and Handsworth Grange Community Schools College. This leasehold property has 700+ years remaining and falls into Council Tax Band B

Council Tax band: B

Tenure: Leasehold

- THREE BEDROOMED SEMI-DETACHED HOUSE
- IDEAL FOR FIRST TIME BUYERS OR INVESTORS ALIKE
- 792 SQ FT OF SPACIOUS ACCOMMODATION
- AMPLE ON ROAD PARKING
- GOOD LOCAL AMENITIES
- FANTASTIC REAR FAMILY GARDEN
- EASY ACCESS TO TRANSPORT LINKS INCLUDING SHEFFIELD PARKWAY
- CLOSE BY TO LOCAL REPUTABLE SCHOOLS
- AVAILABLE WITH NO ONWARD CHAIN
- LEASEHOLD PROPERTY AND COUNCIL TAX BAND B



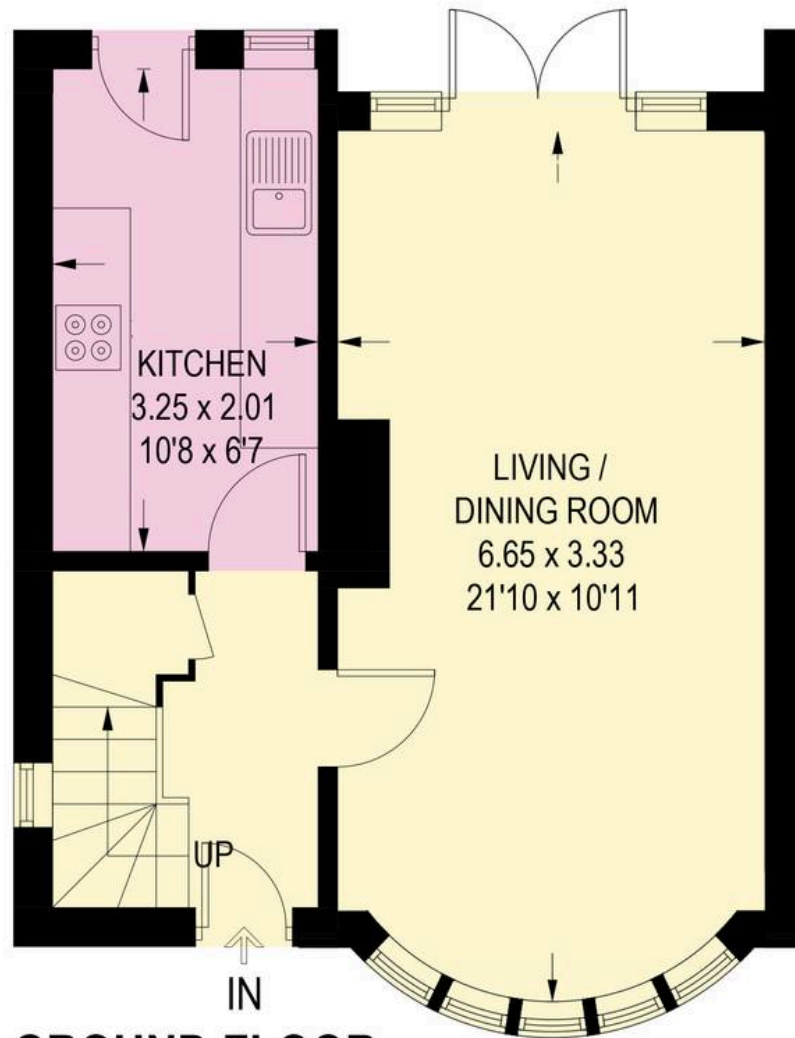




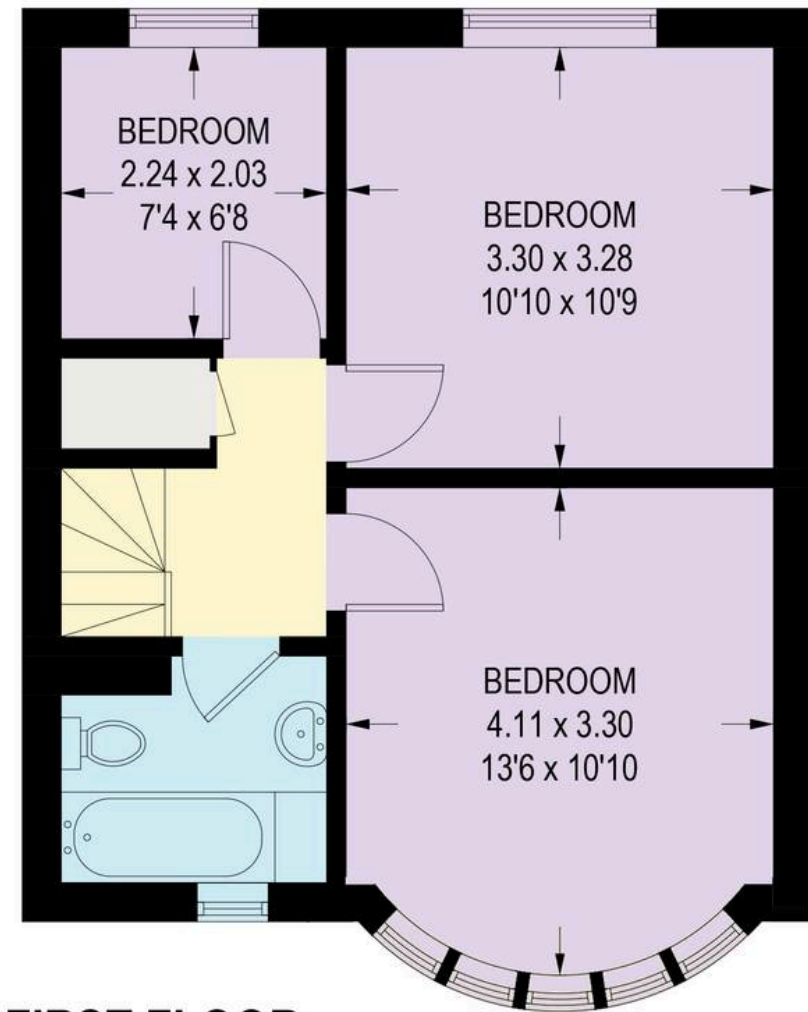


# 104 CLIFTON CRESCENT

APPROXIMATE GROSS INTERNAL AREA = 73.6 SQ M / 792 SQ FT



**GROUND FLOOR**  
**35.1 SQ M / 378 SQ FT**



**FIRST FLOOR**  
**38.5 SQ M / 414 SQ FT**

Illustration is for identification purposes only,  
measurements are approximate, not to scale.  
(ICMFP/2025)