



WHITEHORSES

Buy. Sell. Let. Relax!

0114 268 8533
info@whitehorses.com
www.whitehorses.com

58 Woodthorpe Road, Sheffield

Sheffield

Guide Price **£125,000**

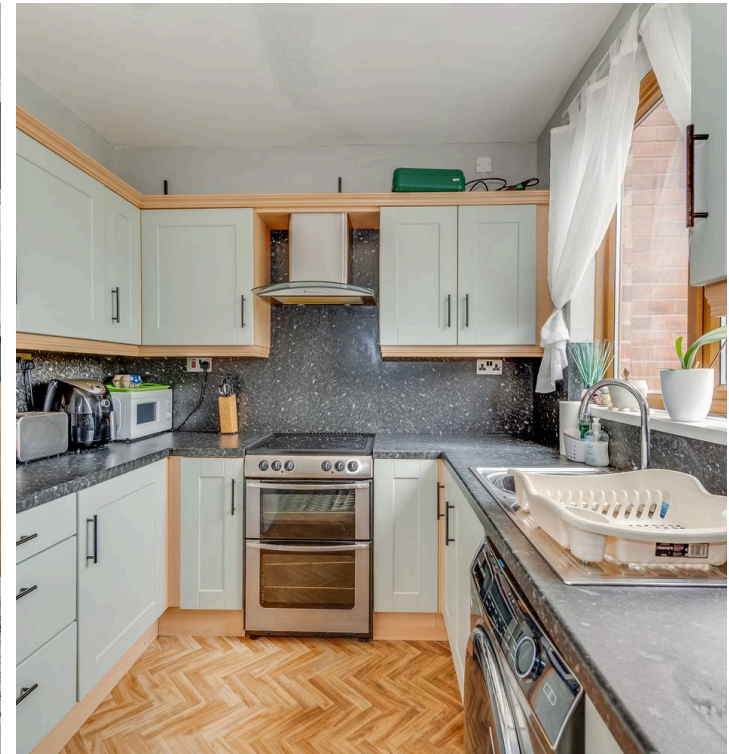
58 Woodthorpe Road

Sheffield, Sheffield

This impeccably maintained two-bedroom semi-detached family home presents a fantastic opportunity for families and first-time buyers alike. Located in a prime area with convenient access to local amenities, shops, public transport, and reputable schools, this property offers both comfort and convenience. The immaculate interior is complemented by private rear gardens, ideal for outdoor family gatherings and relaxation. Moreover, the property boasts ample on-street parking, making daily life hassle-free. This freehold gem is also set close to an array of lush green spaces, providing a tranquil escape from the urban hustle. Council Tax band: A

Tenure: Freehold

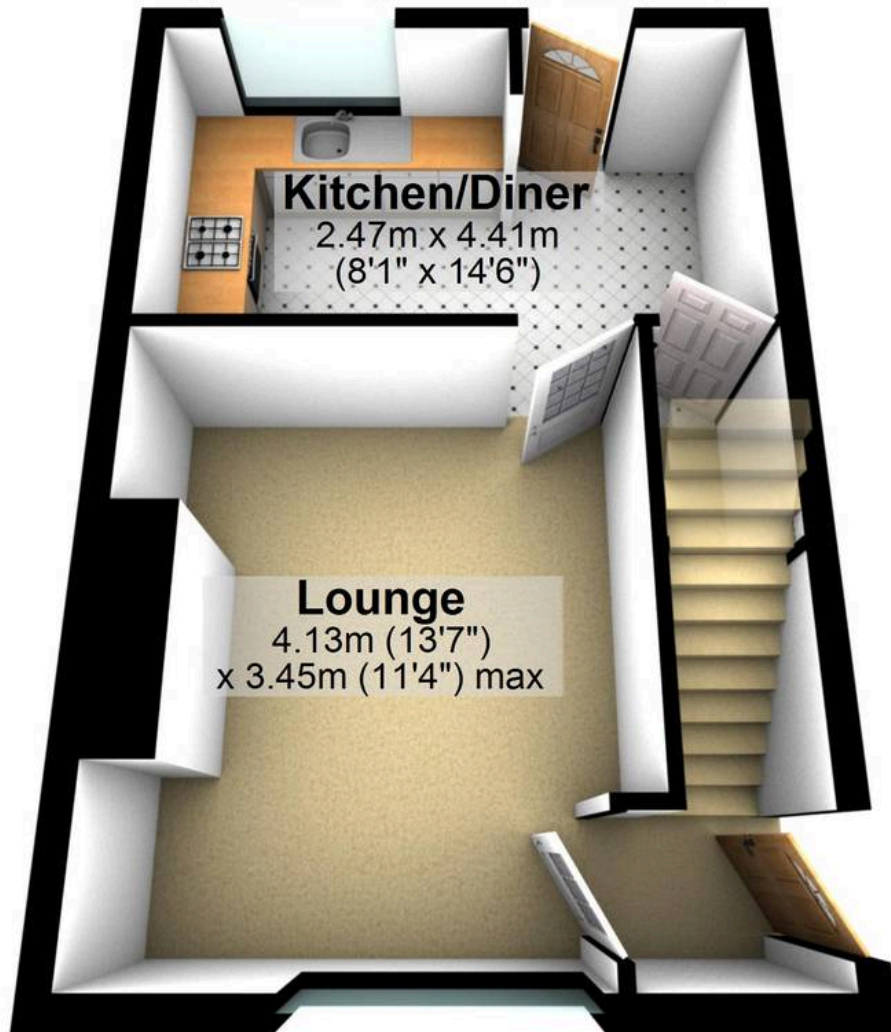
- TWO BEDROOMED SEMI-DETACHED FAMILY HOME
- IMMACULATELY PRESENTED THROUGHOUT
- PRIVATE REAR GARDENS PERFECT FOR FAMILIES
- PERFECT FOR FIRST TIME BUYERS
- GREAT LOCATION CLOSE TO SHOPS AND PUBLIC TRANSPORT
- CLOSE TO REPUTABLE LOCAL SCHOOLS
- GREAT BUY TO LET OPPORTUNITY
- AMPLE ON STREET PARKING
- CLOSE TO AN ABUNDANCE OF LOCAL GREEN SPACES
- FREEHOLD PROPERTY





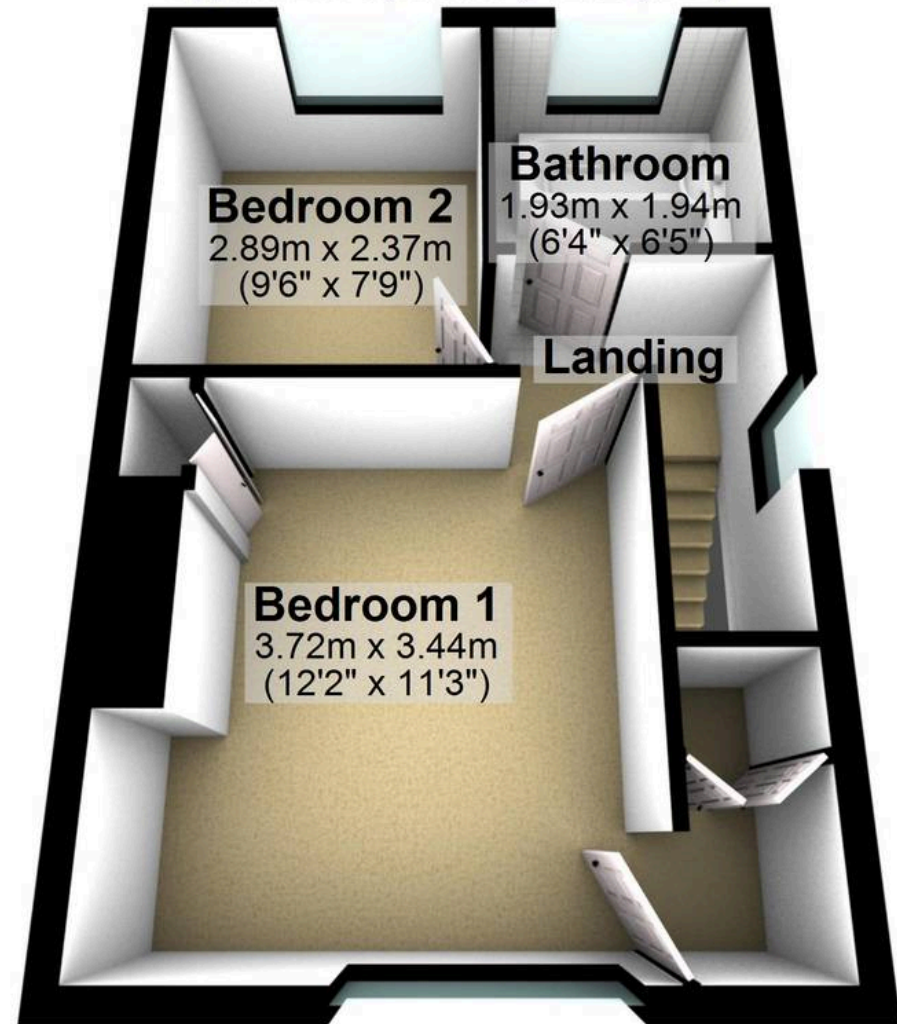
Ground Floor

Approx. 29.6 sq. metres (318.5 sq. feet)



First Floor

Approx. 29.6 sq. metres (318.5 sq. feet)



Total area: approx. 59.2 sq. metres (636.9 sq. feet)

All measurements are approximate
Plan produced using PlanUp.

58 Woodthorpe Road