



3 Knowle Court Button Hill, Sheffield

Sheffield

Guide Price £200,000 - £215,000

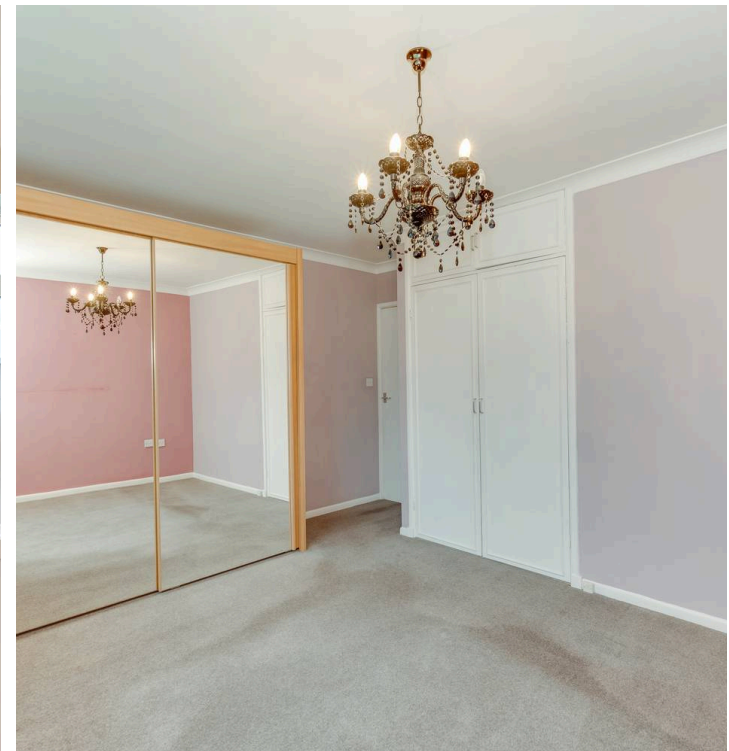
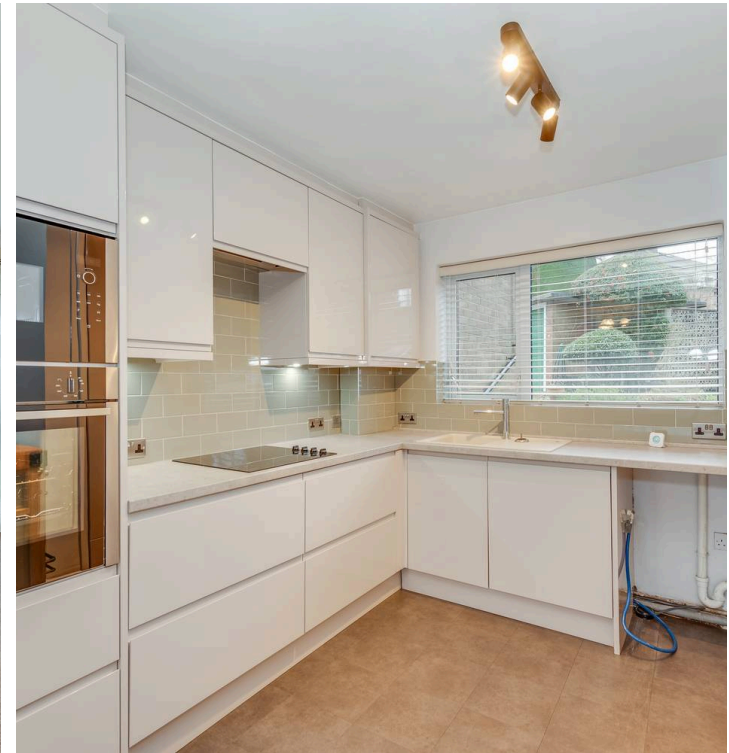
3 Knowle Court Button Hill

Sheffield, Sheffield

Situated in the heart of ever-popular Ecclesall in Sheffield S11, this beautiful two double bedroom ground floor apartment presents an exceptional opportunity for those seeking a stylish apartment in a prime location. Finished internally to a high standard, the property boasts a newly fitted contemporary, fitted modern kitchen and a contemporary shower room, both designed to complement the spacious and light-filled living areas that total an impressive 797 sq feet. The apartment forms part of a well-maintained and highly sought-after development, offering residents ample car parking and the reassurance of secure, well-kept communal areas (ideal for those who value convenience and peace of mind).

Council Tax band: B Tenure: Leasehold

- BEAUTIFUL TWO DOUBLE BEDROOM GROUND FLOOR APARTMENT
- FINISHED INTERNALLY TO A REALLY GOOD STANDARD WITH NEWLY FITTED KITCHEN AND SHOWER ROOM
- AVAILABLE TO MARKET WITH THE HUGE BENEFIT OF NO UPWARD CHAIN AND VACANT POSSESSION ON COMPLETION
- LOCATED IN THE GEART OF ULTRA POPULAR ECCLESALL IN SHEFFIELD ELEVEN
- PERFECT FOR THOSE LOOKING TO DOWNSIZE OR THE PROFESSIONAL COUPLE
- VIEWING ESSENTIAL TO SEE THE FINISH ON OFFER BY THIS SPACIOUS AND LIGHT APARTMENT
- CLOSE TO NUMEROUS INDEPENDENT CAFES EATERIES AND SHOPS ALL WITHIN A SHORT STROLL
- CLOSE TO THE PEAK DISTRICT ECCLESALL WOODS TOGETHER WITH PRINCIPAL HOSPITALS AND UNIVERSITIES



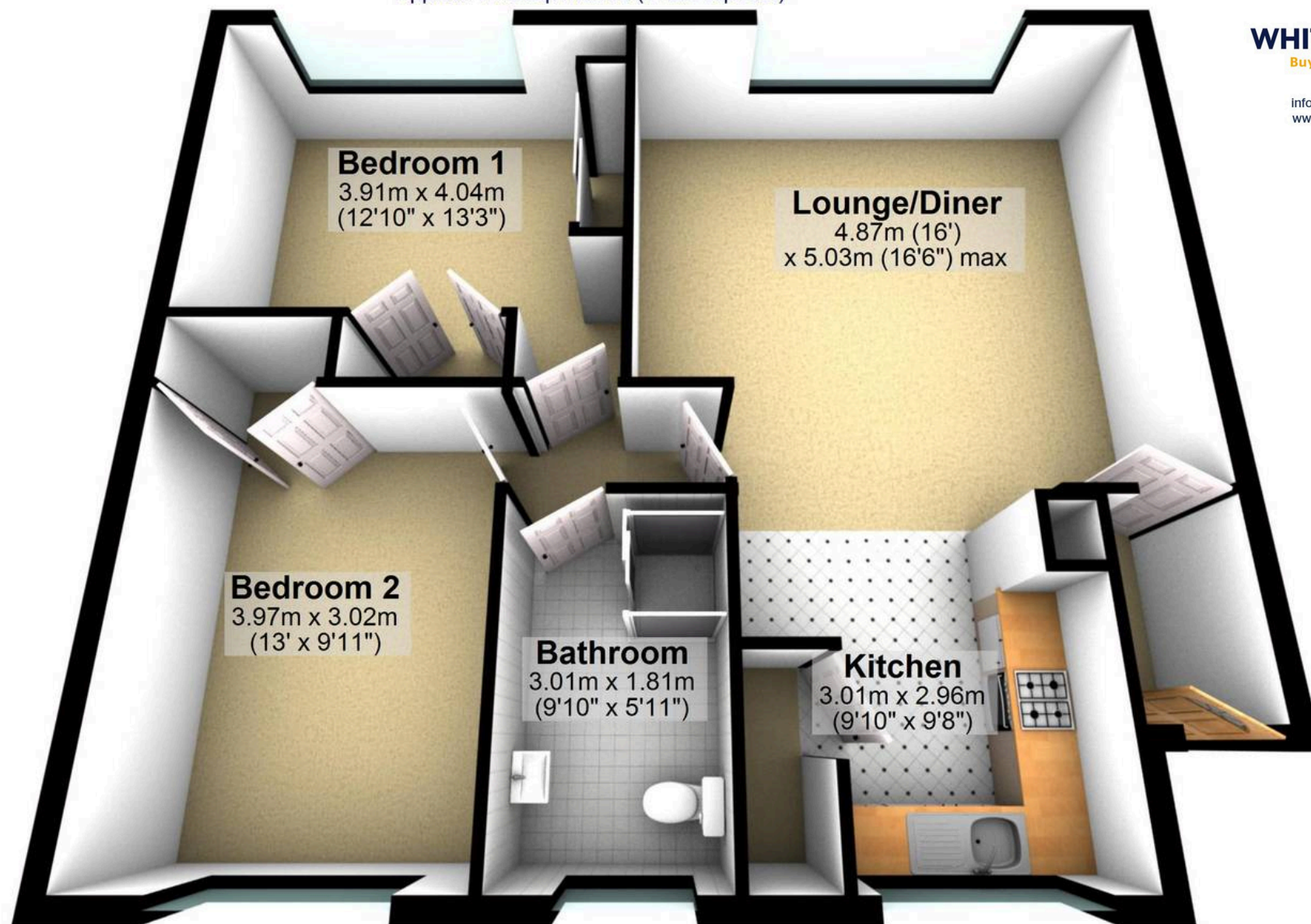


Ground Floor

Approx. 71.8 sq. metres (772.6 sq. feet)


WHITEHORNES
Buy. Sell. Let. Relax!

0114 268 8533
info@whitehorns.com
www.whitehorns.com



Total area: approx. 71.8 sq. metres (772.6 sq. feet)

All measurements are approximate
Plan produced using PlanUp.

3 Knowle Court, Button Hill