



**WHITEHORNES**

Buy. Sell. Let. Relax!

0114 268 8533  
info@whitehorns.com  
www.whitehorns.com



**115 Murray Road, Ecclesall**

Sheffield

**Guide Price £300,000 - £320,000**

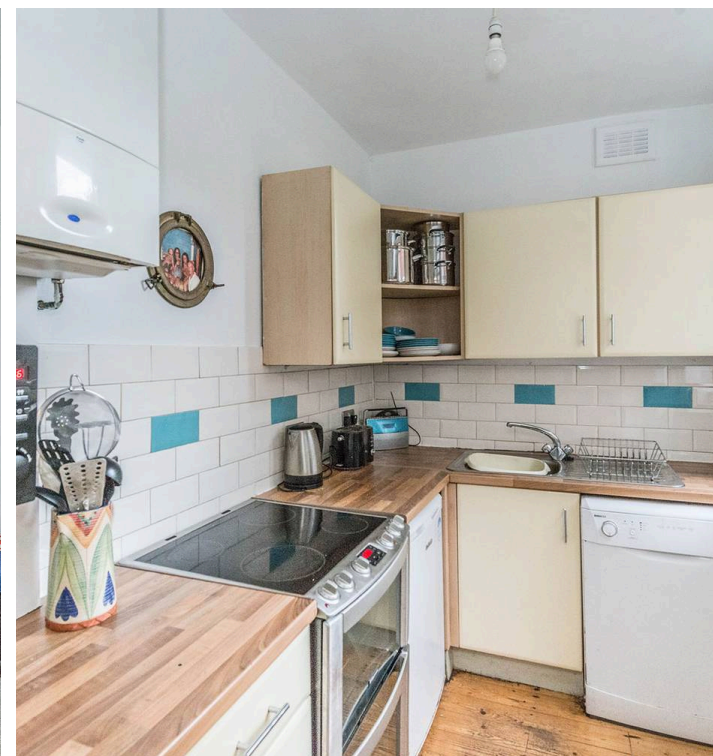


# 115 Murray Road

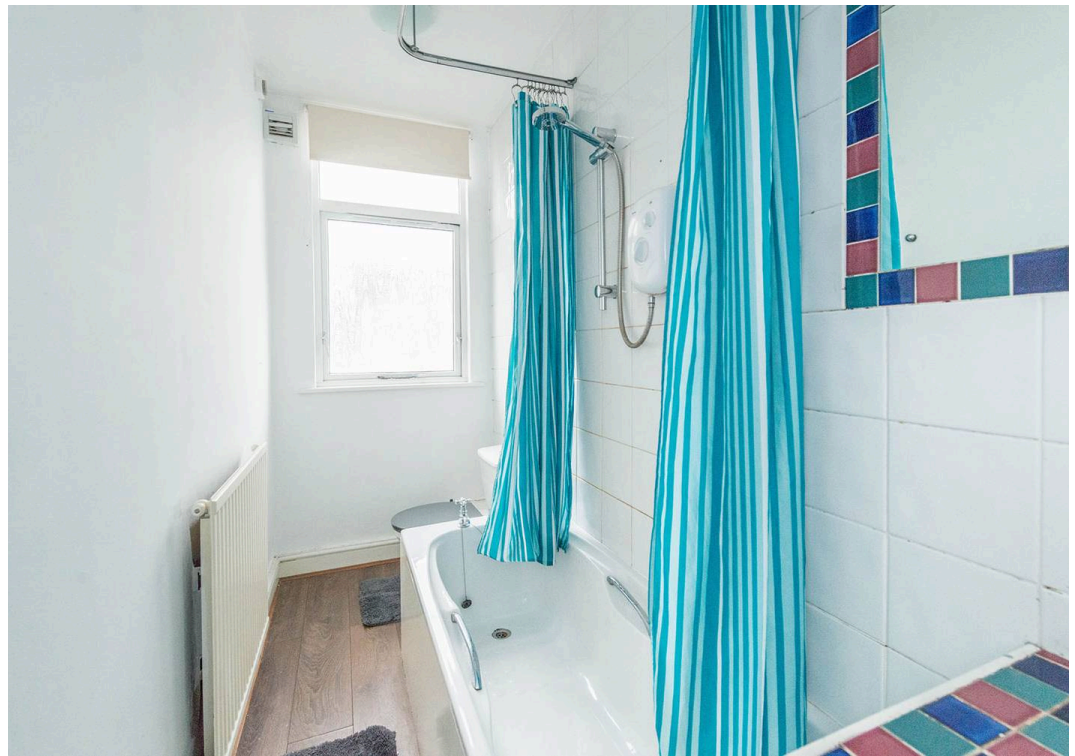
Ecclesall, Sheffield

A tastefully presented and very well proportioned three double bed roomed, bay windowed, single rear off shot, Victorian terraced property. Benefiting from the passageway to the front and enjoying flat private rear gardens this superb property has three floors of spacious and light accommodation and further potential to the basement to convert. The property will appeal hugely to the professional couple, first time buyer and young family alike. Ideally placed in the heart of one of Sheffield's most sought after residential suburb within easy access of numerous local independent cafes, eateries and shops within fashionable Ecclesall and the renowned Sharrow Vale and of course The Peak District is right on the door step. With Ofsted rated excellent schooling catchments available including Greystones juniors and High Storrs secondary. Council Tax band: B Tenure: Leasehold

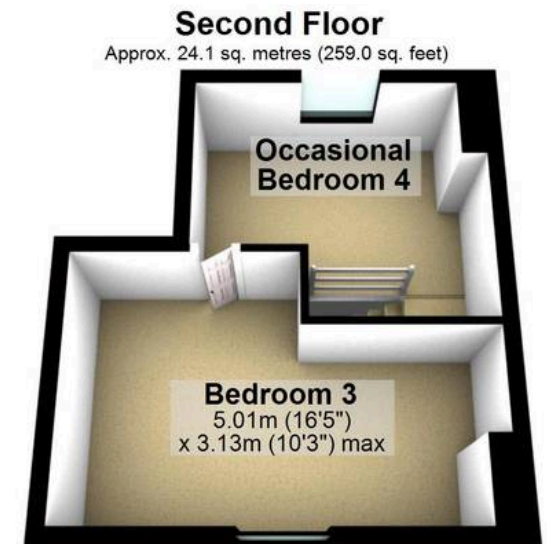
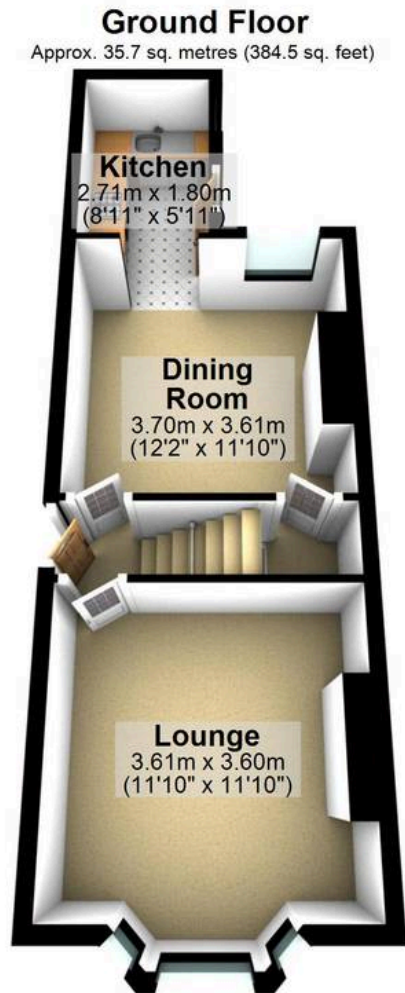
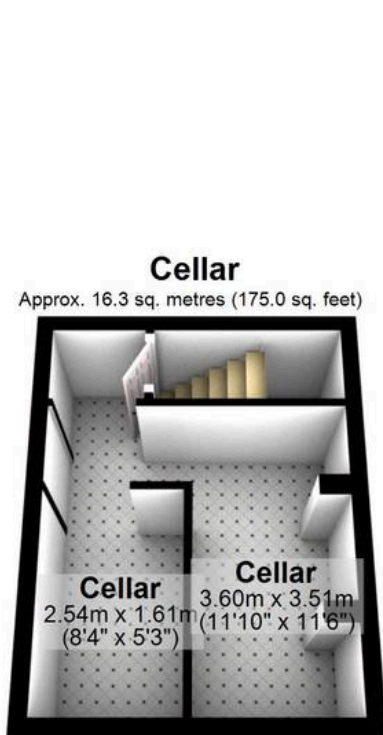
- STUNNING THREE DOUBLE BEDROOMED BAY-WINDOWED VICTORIAN MID-TERRACED HOUSE
- HEART OF ULTRA POPULAR RESIDENTIAL AREA OF ECCLESALL
- THREE IMPRESSIVE FLOORS OF ACCOMMODATION TOTALLING 1215 SQ FEET
- CLOSE TO AN ARRAY OF AMENITIES INCLUDING INDEPENDENT SHOPS AND CAFES ALONG BANNER CROSS AND SHARROW VALE
- REPUTABLE LOCAL SCHOOLS INCLUDING GREYTONES JUNIOR SCHOOL AND HIGH STORRS SECONDARY SCHOOL
- PERFECT FOR THE PROFESSIONAL COUPLE AND YOUNG FAMILY
- VIEWING ESSENTIAL TO DO FULL JUSTICE AND NO UPWARD CHAIN INVOLVED











Total area: approx. 112.9 sq. metres (1215.3 sq. feet)

All measurements are approximate  
Plan produced using PlanUp.