



WHITEHORSES

Buy. Sell. Let. Relax!

0114 268 8533
info@whitehorses.com
www.whitehorses.com

167 Abbey Brook Drive, Sheffield

Sheffield

Offers in Region of **£245,000**

167 Abbey Brook Drive

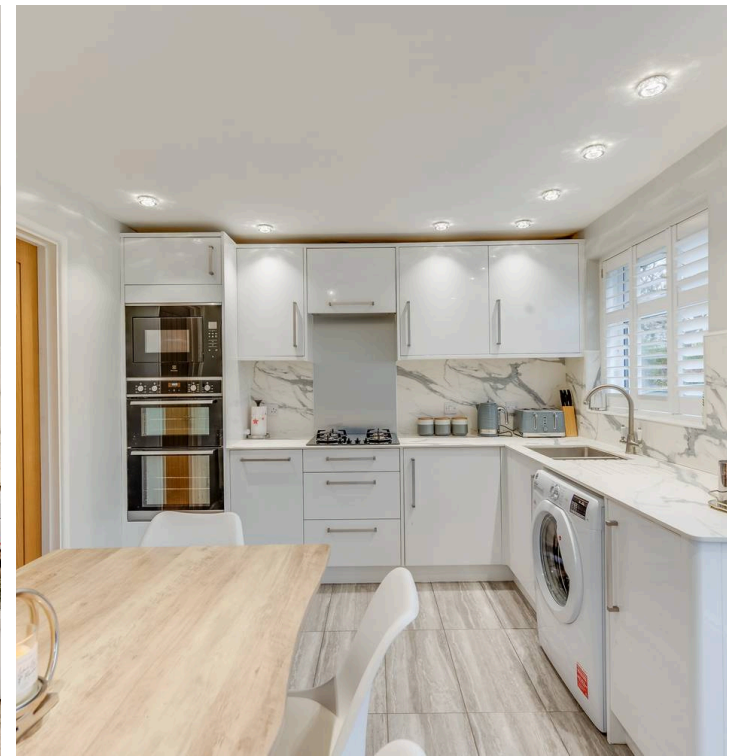
Sheffield

This beautifully presented three bedroom semi-detached family home is located at the end of a quiet and highly sought-after cul-de-sac, offering a peaceful setting ideal for growing families. Boasting a modern and stylish finish throughout, the property features a spacious lounge, a contemporary kitchen with integrated appliances, and three well-proportioned bedrooms. The home is perfectly situated close to reputable local schools, making it an excellent choice for families with children. Additional benefits include off-road parking for multiple cars, an EV charging point, and excellent transport links for convenient commuting. The property is offered as a freehold, providing long-term security and peace of mind.

Council Tax band: A

Tenure: Freehold

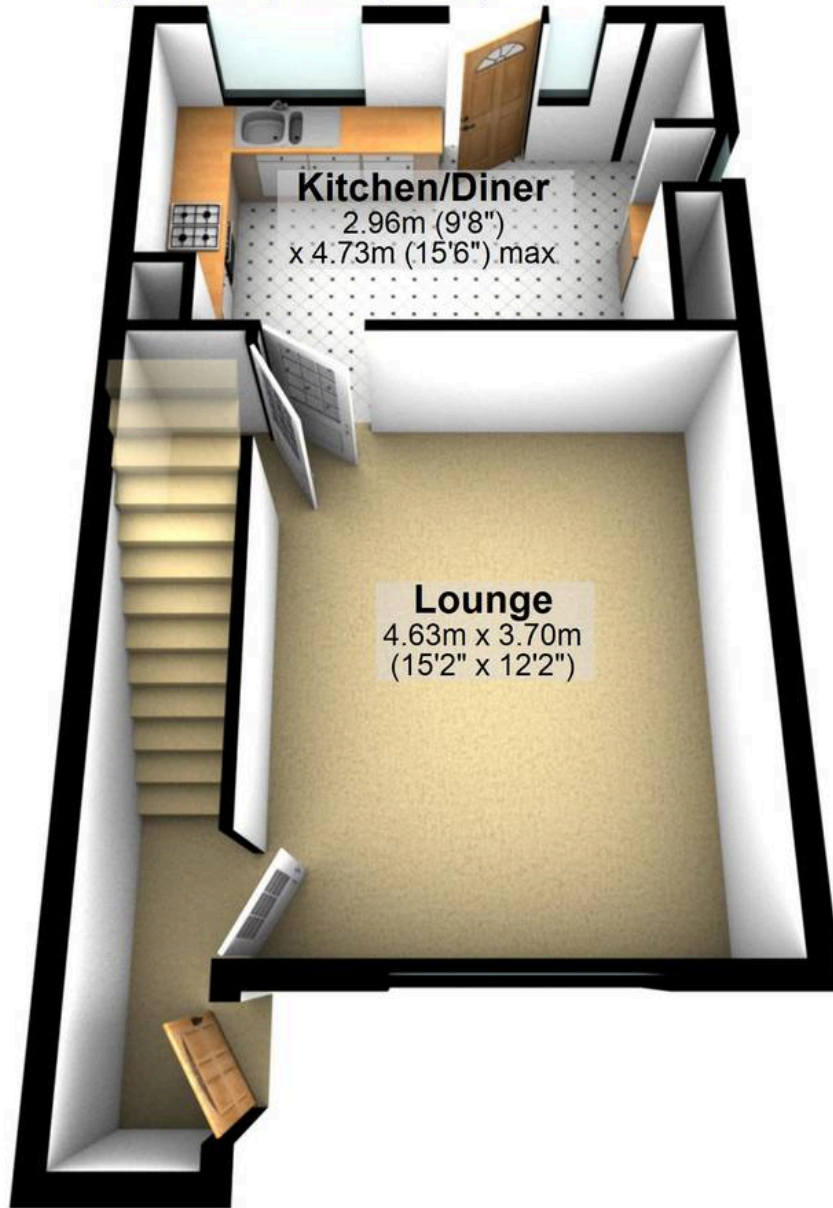
- THREE BEDROOMED SEMI-DETACHED FAMILY HOME
- QUIET LOCATION AND THE END OF THIS POPULAR CUL-DE-SAQ
- MODERN AND STYLISH FINISH THROUGHOUT
- OFF ROAD PARKING FOR NUMEROUS CARS
- VERY CLOSE TO LOCAL REPUTABLE LOCAL SCHOOLS
- LARGE PRIVATE GARDENS
- PERFECT FOR GROWING FAMILIES
- CLOSE TO THE EVER POPULAR GRAVES PARK
- GREAT TRANSPORT LINKS
- FREEHOLD PROPERTY WITH EV CHARGING POINT





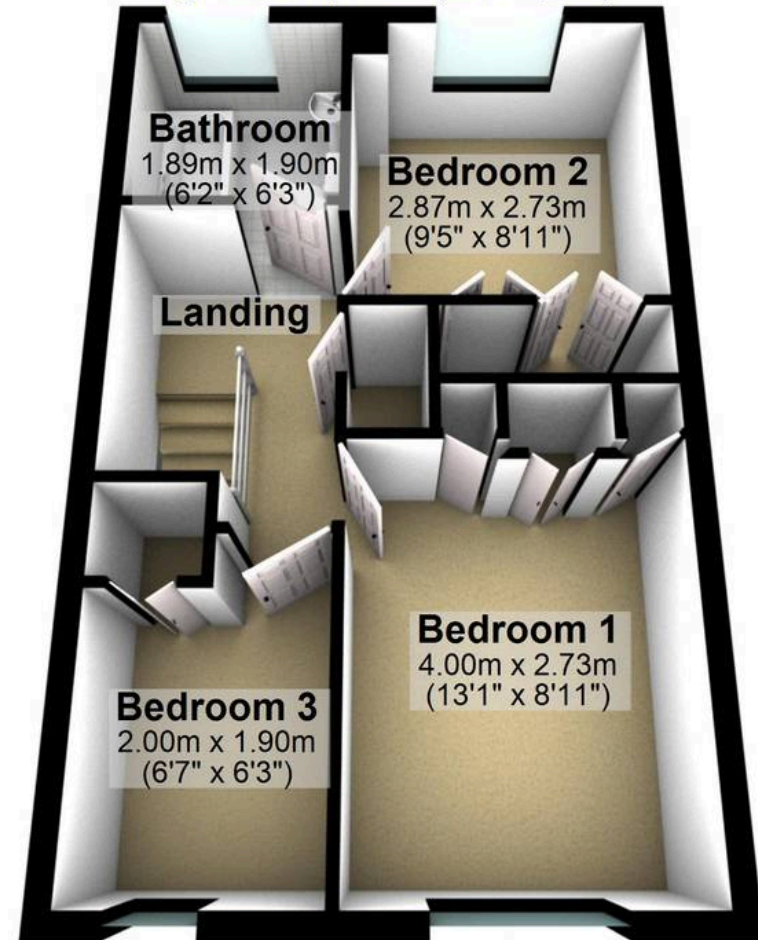
Ground Floor

Approx. 37.5 sq. metres (403.2 sq. feet)



First Floor

Approx. 36.3 sq. metres (391.1 sq. feet)



Total area: approx. 73.8 sq. metres (794.3 sq. feet)

All measurements are approximate
Plan produced using PlanUp.

167 ABBEY BROOK DRIVE


WHITEHORNS
Buy. Sell. Let. Relax!

0114 268 8533
info@whitehorns.com
www.whitehorns.com