



WHITEHORNES

Buy. Sell. Let. Relax!

0114 268 8533
info@whitehorns.com
www.whitehorns.com



4 St. Francis Close, Crosspool

Sheffield

Offers in Region of **£225,000**

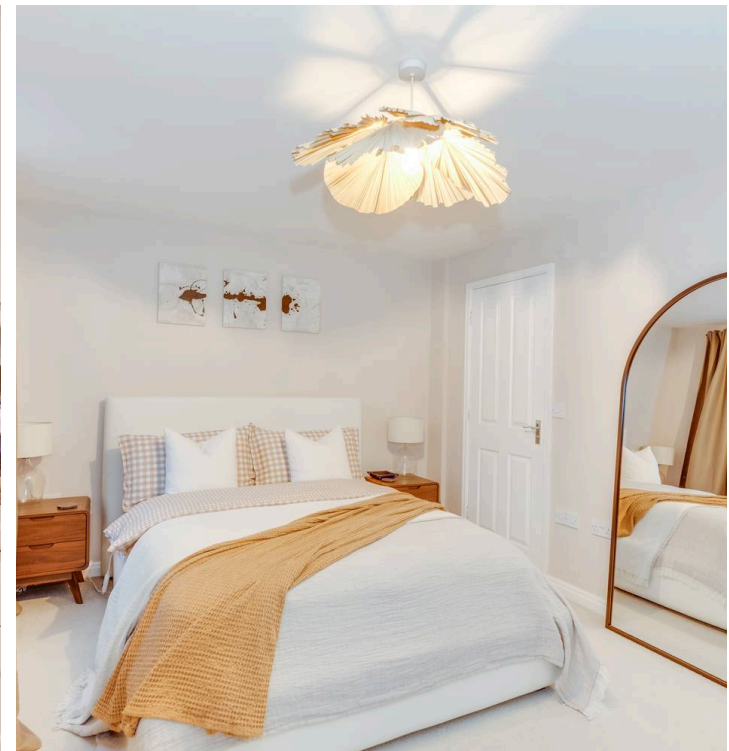
4 St. Francis Close

Crosspool, Sheffield

Council Tax band: C

Tenure: Leasehold

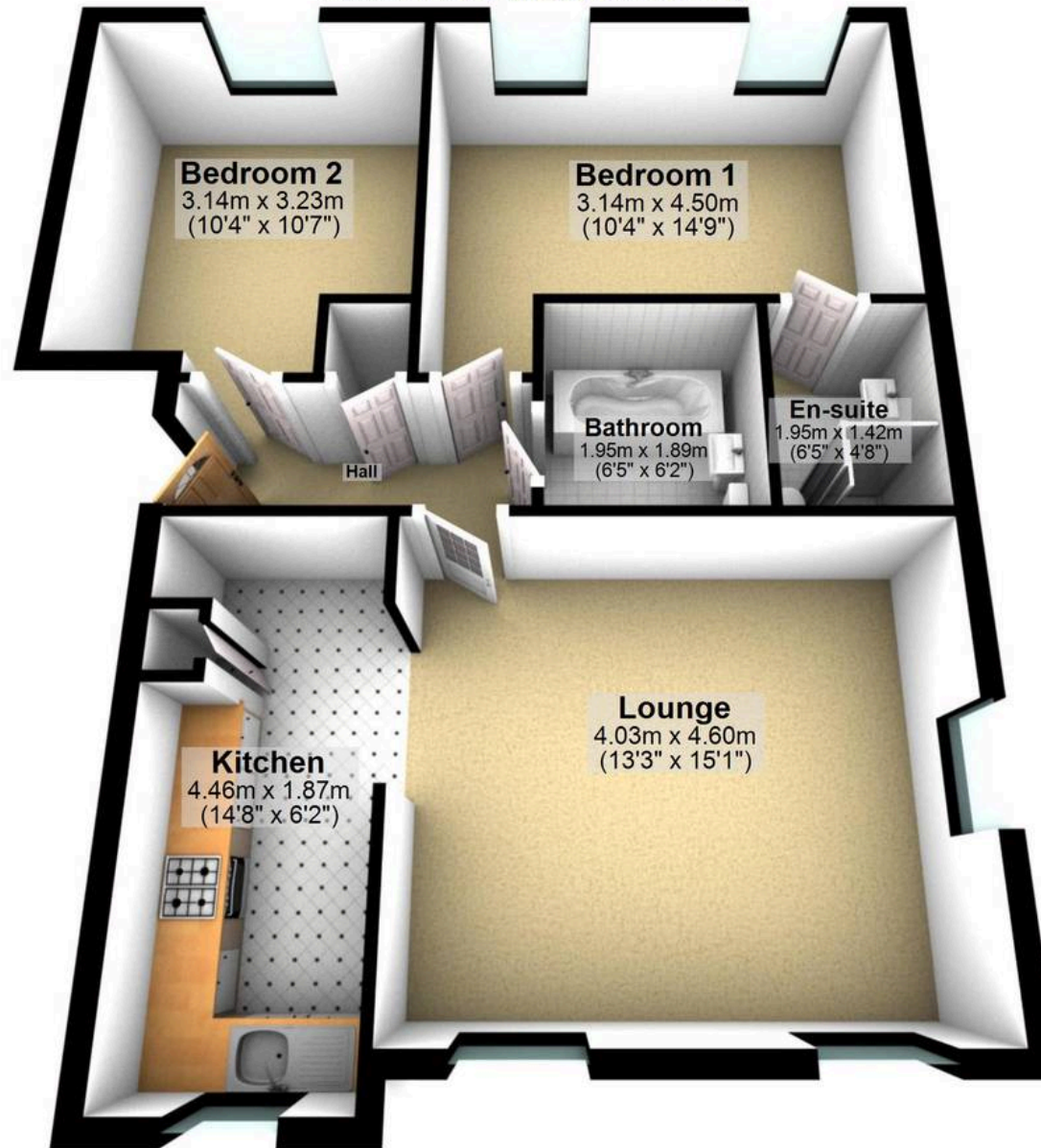
- TWO BEDROOMED FIRST FLOOR APARTMENT
- MODERN AND STYLISH THROUGHOUT
- DESIGNATED OFF ROAD PARKING
- PERFECT FOR FIRST TIME BUYERS
- FANTASTIC LOCATION ON CUSP OF PEAK NATIONAL PARK
- REPUTABLE LOCAL SCHOOLS
- CLOSE TO A WEALTH OF LOCAL AMENITIES
- DECEPTIVELY SPACIOUS THROUGHOUT
- AMPLE STORAGE
- LEASEHOLD AND COUNCIL TAX BAND B





First Floor

Approx. 66.8 sq. metres (719.2 sq. feet)



Total area: approx. 66.8 sq. metres (719.2 sq. feet)

All measurements are approximate
Plan produced using PlanUp.

4 St. Francis Close