



WHITEHORSES

Buy. Sell. Let. Relax!

0114 268 8533
info@whitehorses.com
www.whitehorses.com

23 Southlands Way, Aston

Sheffield

Offers in Region of **£299,950**

23 Southlands Way

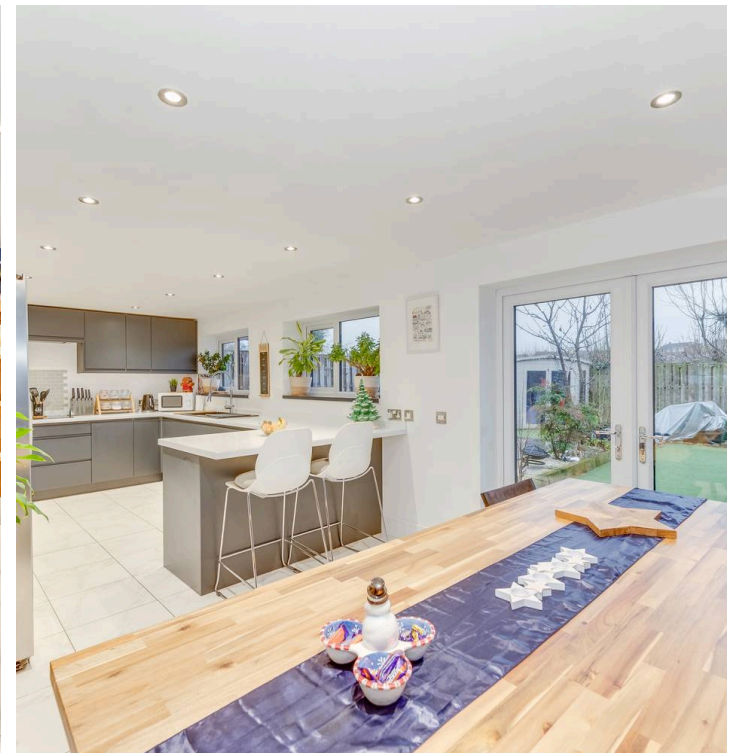
Aston, Sheffield

Located in the heart of Aston on this quiet, residential road is this stunningly presented four bedroomed semi-detached house with a bright and modern feel throughout. Perfect for young families and those alike this property briefly consists of large entry way, an open plan kitchen/dining room, cosy front living room, four bedrooms and two bathrooms. To the outside is an ample driveway providing off-road parking and a beautiful, rear enclosed garden with patio and decking space great for entertaining. Ideally located close by to local amenities and green spaces along with reputable local schools such as Aston Lodge Primary School and Aston Hall Infant/Junior School. It is easy to say that viewing is essential to do full justice to this beautiful property.

Council Tax band: B

Tenure: Freehold

- FOUR BEDROOMED SEMI-DETACHED HOUSE
- SITUATED ON THIS RESIDENTIAL CUL-DE-SAC
- LIGHT, BRIGHT AND MODERN FEEL THROUGHOUT WITH THE ADDED BENEFIT OF UNDERFLOOR HEATING ON THE GROUND FLOOR
- AMPLE DRIVEWAY PROVIDING OFF ROAD PARKING
- PRIVATE AND ENCLOSED REAR GARDEN
- LODGE LANE PARK AND ASTON PARK A SHORT STROLL AWAY
- REPUTABLE LOCAL SCHOOLS INCLUDING ASTON LODGE PRIMARY SCHOOL AND ASTON HALL JUNIOR/INFANT SCHOOL
- PERFECT FOR YOUNG FAMILIES AND THOSE ALIKE
- FREEHOLD PROPERTY AND COUNCIL TAX BAND B
- VIEWING ESSENTIAL TO DO FULL JUSTICE







WHITEHORNES

Buy. Sell. Let. Relax!

0114 268 8533
info@whitehornes.com
www.whitehornes.com